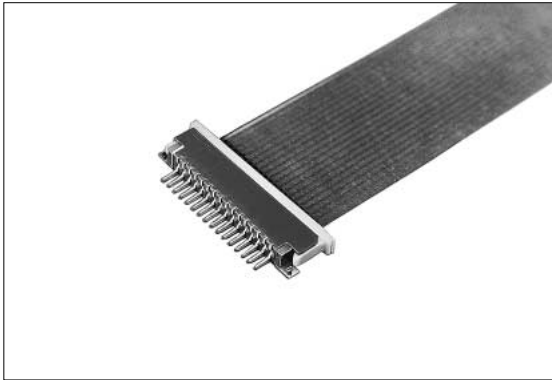


## FPC Connector

# CIC Type (H=2.4mm) 1.0mm Spacing (SMT)



### ■ Features

1. 1.0mm-pitch SMT-ready FPC connector usable with CIC printing.
2. Either upper or lower contact location available.
3. Of the ZIF structure.
4. Supplied in emboss-tape packaging for automatic mounting.

### ■ Specifications

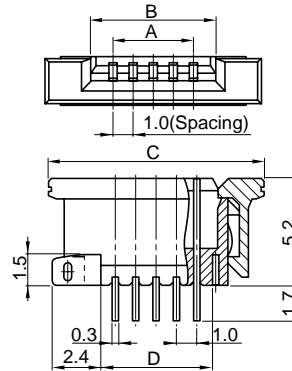
1. Rating : 0.5A 100V AC/DC
2. Contact Resistance : 30mΩ max.
3. Insulation Resistance : 500MΩ min. at 500V DC
4. Withstanding Voltage : 500V AC for one minute
5. Operating Temperature Range : -25°C to +70°C

### ■ Material and Plating

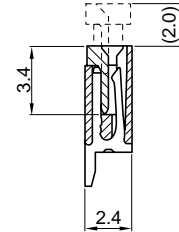
- Housing : Polyphenylene Sulfide (Natural Color) 94V-0
- Cover : Polyphenylene Sulfide (Natural Color) 94V-0
- Contact : Phosphor Bronze Tin-lead Plating
- Frame : Phosphor Bronze Tin-lead Plating

### ● Upper Contact Type CFP24□□-01□□

↑ No. of Pins

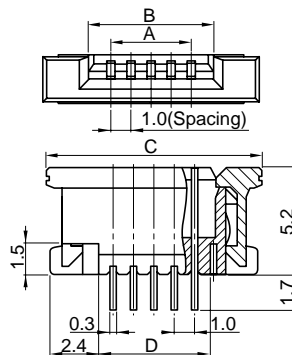


□□	Hold Down	Packing Style
01	With	Embossed Taping
02	Without	Embossed Taping
11	With	Vinyl Bag
12	Without	Vinyl Bag

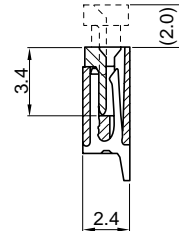


### ● Lower Contact Type CFP25□□-01□□

↑ No. of Pins

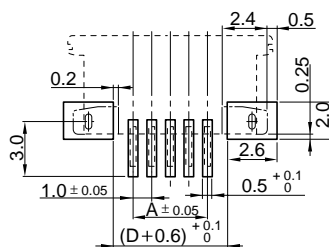


□□	Hold Down	Packing Style
01	With	Embossed Taping
02	Without	Embossed Taping
11	With	Vinyl Bag
12	Without	Vinyl Bag



□□ No. of Pins	A	B	C	D	□□ No. of Pins	A	B	C	D
4	3.0	5.1	9.7	4.5	16	15.0	17.1	21.7	16.5
5	4.0	6.1	10.7	5.5	17	16.0	18.1	22.7	17.5
6	5.0	7.1	11.7	6.5	18	17.0	19.1	23.7	18.5
7	6.0	8.1	12.7	7.5	19	18.0	20.1	24.7	19.5
8	7.0	9.1	13.7	8.5	20	19.0	21.1	25.7	20.5
9	8.0	10.1	14.7	9.5	21	20.0	22.1	26.7	21.5
10	9.0	11.1	15.7	10.5	22	21.0	23.1	27.7	22.5
11	10.0	12.1	16.7	11.5	24	23.0	25.1	29.7	24.5
12	11.0	13.1	17.7	12.5	26	25.0	27.1	31.7	26.5
13	12.0	14.1	18.7	13.5	28	27.0	29.1	33.7	28.5
14	13.0	15.1	19.7	14.5	29	28.0	30.1	34.7	29.5
15	14.0	16.1	20.7	15.5	30	29.0	31.1	35.7	30.5

### ■ PC Board Dimension



### ■ Applicable FPC Dimension

