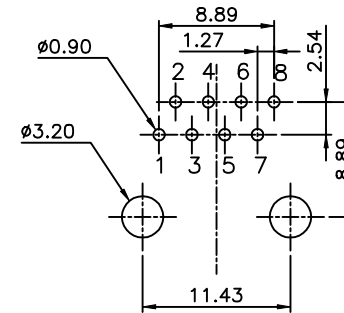
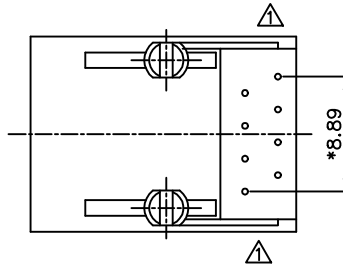
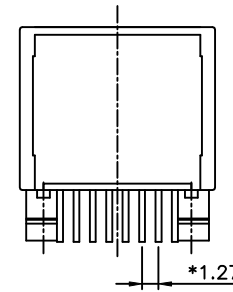
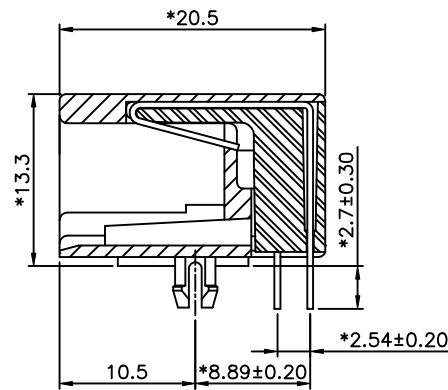
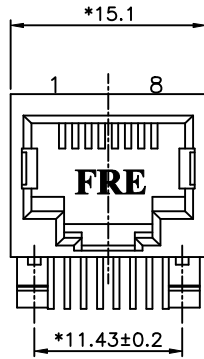


REVISION RECORD				
REV	ECO	DESCRIPTION	DRFT	CHKD
△		DRAWING MODIFY	JAMY 08/17/05	



PC Board Layout Component Side Show

NOTES:

ELECTRICAL:

- VOLTAGE RATING : 125 VAC RMS.
- CURRENT RATING : 1.5 AMP.
- CONTACT RESISTANCE : 45 MILLIOHMS MAX.
- INSULATION RESISTANCE: 1000 MEGOHMS MIN @ 500 VDC.
- DIELECTRIC STRENGTH : 1000 VAC RMS 60Hz, 1MIN.

MECHANICAL:

- HOUSING MATERIAL : FR52 UL94V-0.
- CONTACT MATERIAL : PHOSPHOR BRONZE ϕ 0.46mm.
- PLATING : GOLD PLATING OVER NICKEL.
- OPERATING LIFE : 750 CYCLES MIN.
- PCB RETENTION PRE-SOLDER : 1 LB MIN.
- PCB RETENTION POST-SOLDER: 10 LBS MIN.

ENVIRONMENTAL:

- STORAGE : -40°C TO +85°C.
- OPERATION: 0°C TO 70°C.
- WAVE SOLDERING TEMPERATURE: 255°C~265°C(5~10 SECONDS)

MATES WITH MODULAR PLUG CONFORMING TO

FCC PART 68, SUBPART F.

CUL FILE NO. E163191

ROHS PART NUMBER: E598X-000L7X-L

- | | | |
|------|--------|-----------|
| 2-2C | 1-3u" | 2-6u" |
| 6-6C | 3-15u" | 4-30u" |
| 8-8C | 5-50u" | 6-Pd 20u" |

MM (INCH)		DFTO JAMY	DATE 7/25/05	FULL RISE ELECTRONIC CO., LTD	
TOLERANCES EXCEPT AS NOTED		CHKD SAMMY	DATE 2005/08/17	TITLE DEEPEN TYPE	
		MFO	DATE	20.57 PCB JACK 8P	
DETACHED LISTS		APPV LUSHENG	DATE 2005/08/17	DRAWING NO. GE593063-LA	
MM		MATERIAL :		SIZE	REV
.0 ±0.2	±	QT'Y :		A3	1
.00 ±0.15	±	FINISH :		/PART NO. SEE NOTE	
.000 ±0.075	±	SCALE : 2.5 : 1		DO NOT SCALE DRAWING	
ANGLES ± 0.5		THIRD ANGLE PROJECTION		SHEET OF	