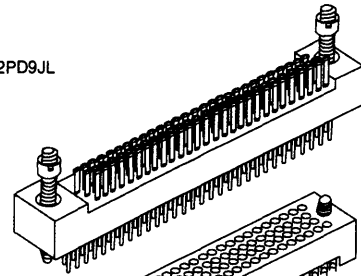


4 • ROW Connectors

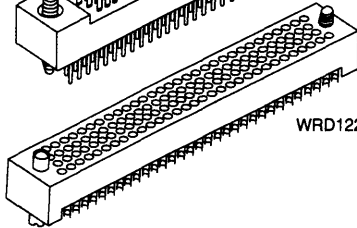
Sandwich- Boards

WRDV-WRD

WRDV122PD9JL



WRD122SOCJTA



Examples:

PLUG: WRDV 122 PD9 JL
RECEPTACLE: WRD 122 SOC JTA

PLUG

RECEPTACLE

SERIES

WRDV = 4-row, straight, plug, w/o mounting ears

WRD = 4-row, straight, receptacle, w/o mounting ears
WRD = 4-row, right-angle, receptacle, w/o mounting ears

NUMBER OF CONTACTS

122

122

TYPE OF CONTACTS

PC = Pin, straight, solder cup
PD7 = Pin, straight, dip solder, .109
PD9 = Pin, straight, dip solder, .140
PD11 = Pin, straight, dip solder, .172
PD15 = Pin, straight, dip solder, .234

SAC = Socket, straight, solder cup
SAD9 = Socket, straight, dip solder, .140
SAD11 = Socket, straight, dip solder, .172
SAD15 = Socket, straight, dip solder, .234
SAF3 = Socket, straight, flex-circuit, .050
SAF6 = Socket, straight, flex-circuit, .093
SAP = Socket, straight, pin termination, .150, connector saver
SAW24 = Socket, straight, wire wrap, .375
SOR9 = Socket, right-angle, dip solder

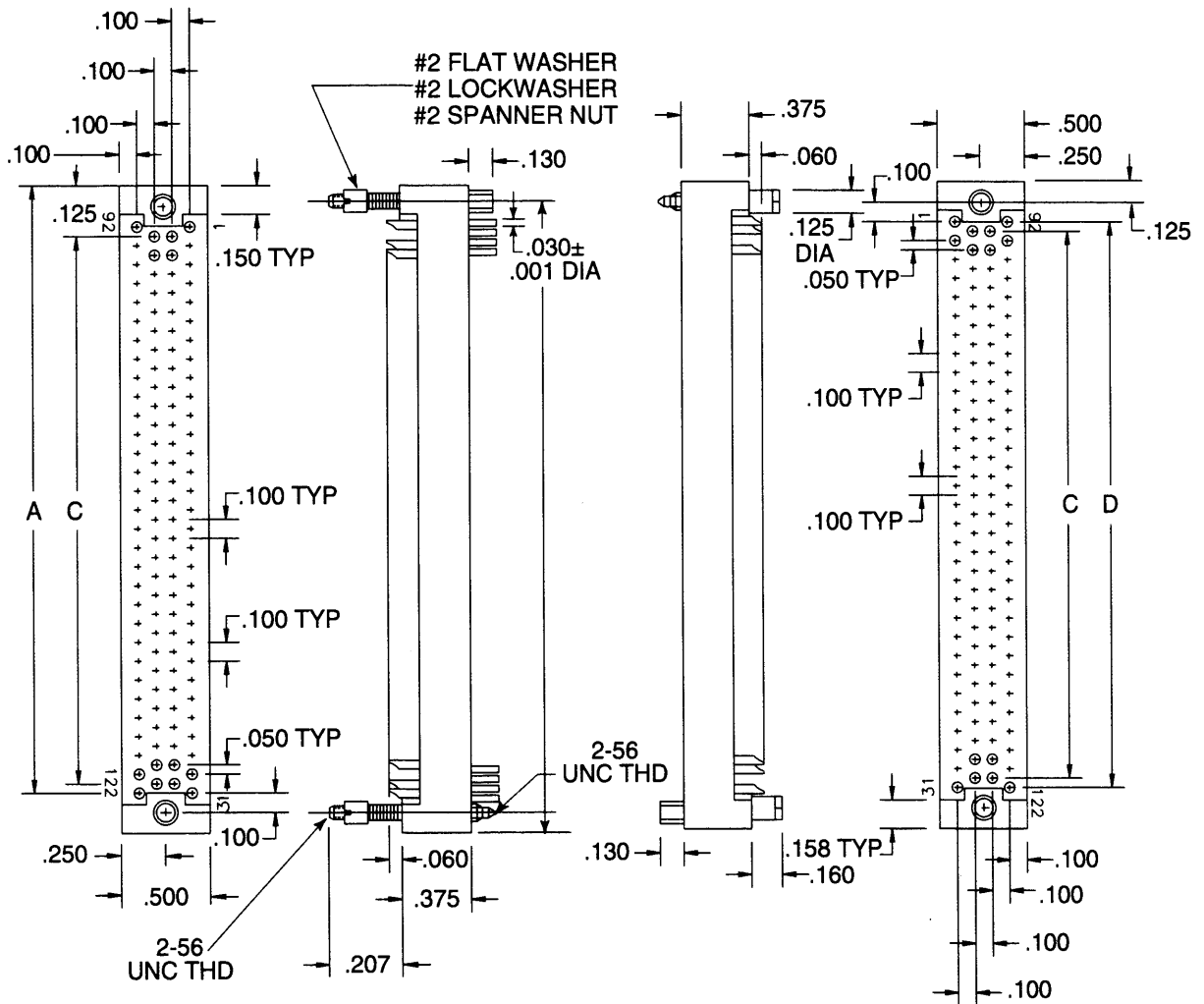
TYPE OF HARDWARE

JL = Fixed jackset, long
SY = Guide Set
SY-# = Guide Set, polarized

JTA = Turning jackset, .200
JTB = Hex turning jackset, .200
JTL = Long turning jackset, .700
SY = Guide Set
SY-# = Guide Set, polarized

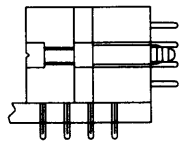
OPTIONS

- OPTION CODES: Add to the end of the part number. Example: WRD122SAD9SY-D01. Call factory for additional codes.
- B82: Termination face sealed against conformal coating.
- D01: Pre-tin contact terminations. (Solder cup, wire wrap and flex circuit contacts are excluded.)
- D54: Combine -D01 + B82 special codes.



EXAMPLE: WRDV122PCJL

EXAMPLE: WRD122SOCJTJB



WRDV-WRD Dimensions

SIZE	A	B	C	D
122	3.200	3.450	2.900	3.000