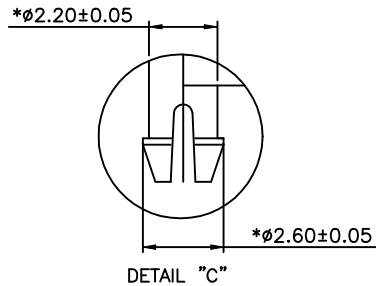


| REVISION RECORD | | | | |
|-----------------|-----|-------------|---------------|------|
| REV | ECO | DESCRIPTION | DRFT | CHKD |
| △ | | ADD P/N | JAMY 10/12/05 | |
| △ | | ADD P/N | JAMY 2/10/06 | |
| △ | | ADD P/N | JAMY 4/24/06 | |



NOTES:

ELECTRICAL:

- VOLTAGE RATING : 125 VAC RMS.
- CURRENT RATING : 1.5 AMP.
- CONTACT RESISTANCE : 30 MILLIOHMS MAX.
- INSULATION RESISTANCE: 1000 MEGOHMS MIN @ 500 VDC.
- DIELECTRIC STRENGTH : 1000 VAC RMS 60Hz, 1MIN.

MECHANICAL:

- HOUSING MATERIAL : FR52 94V-0.
- HOUSING COLOUR : GREY OR BK.
- CONTACT MATERIAL : PHOSPHOR BRONZE ϕ 0.46mm.
- PLATING : GOLD PLATING OVER NICKEL.
- OPERATING LIFE : 750 CYCLES MIN.
- PCB RETENTION PRE-SOLDER : 1 LB MIN.
- PCB RETENTION POST-SOLDER: 10 LBS MIN.

ENVIRONMENTAL:

- STORAGE : -40°C TO +85°C.
- OPERATION: 0°C TO 70°C.
- WAVE SOLDERING TEMPERATURE: 255°C~265°C (5~10 SECONDS).

MATES WITH MODULAR PLUG CONFORMING TO

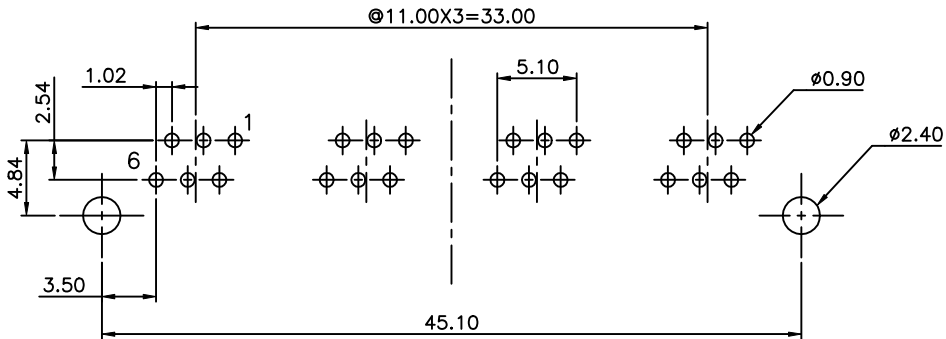
FCC PART 68, SUBPART F.

CUL FILE NO. E189514

ROHS PART NUMBER: E556X-20CXXX-L

NO. OF CONTACT
 2-2 CONTACTS
 4-4 CONTACTS
 6-6 CONTACTS

1- 3u" 2- 6u" 3-15u"
 4-30u" 5-50u" 6-Pd20u"
 UN-W/O PANEL STOP W/O LOGO GY
 UM-W/ PANEL STOP W/O LOGO GY
 U1-W/ PANEL STOP W/O LOGO BK
 U2-W/O PANEL STOP W/O LOGO BK



PC Board Layout Component Side Shown

| | | | | | |
|------------------------|----------------------------|-------------------------|----------------|---------------------------------|-------|
| DETACHED LISTS | MM (INCH) | DFTO YICAN | DATE 04/30/05 | FULL RISE ELECTRONIC CO., LTD | |
| | TOLERANCES EXCEPT AS NOTED | CHKD YICAN | DATE 2006/4/25 | | |
| | .0 ±0.2 | MFO | DATE | TITLE | |
| | .00 ±0.15 | APPV LUSHENG | DATE 2006/4/25 | MINI L/P SIDE ENTRY PCB JACK 6P | |
| .000 ±0.075 | MATERIAL : | DRAWING NO. GE553023-LA | | SIZE A3 | REV 3 |
| ANGLES ± 0.5 | QT'Y : | /PART NO. SEE NOTE | | DO NOT SCALE DRAWING | |
| THIRD ANGLE PROJECTION | FINISH : | SCALE : | | SHEET OF | |