

## STRAIGHT TAIL ALL PLASTIC MALE PINS FOR PCB MOUNTING



LR49571 E60980

### PHYSICAL PROPERTIES

**INSULATION MATERIAL:** Glass filled thermoplastic rated UL 94V-0

**COLOR:** Black

**CONTACTS:** High strength copper alloy

**DURABILITY:** Up to 500 insertions and withdrawals without degradation of performance, dependent upon contact plating thickness selected

### ELECTRICAL PROPERTIES

**OPERATING VOLTAGE:** 600 VDC (sea level)

**CURRENT RATING:** 5 Amperes

**CONTACT RESISTANCE:** 10 milliohms max.

@ rated current

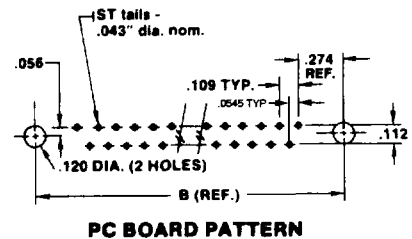
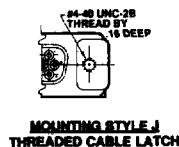
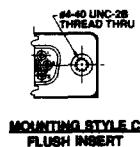
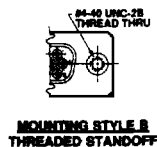
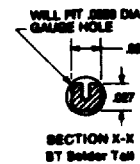
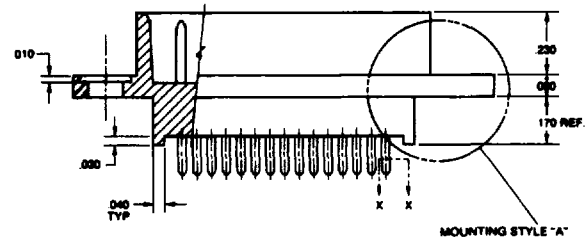
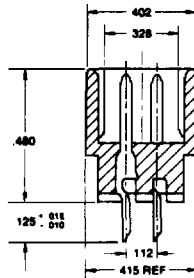
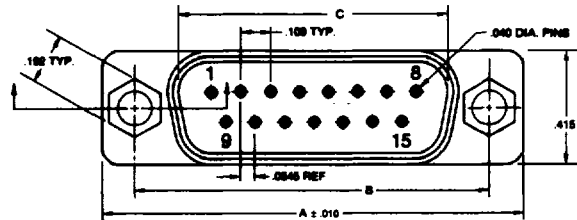
**INSULATION RESISTANCE:** 5000 megohms minimum

**DIELECTRIC WITHSTANDING VOLTAGE:**

1000 VAC minimum

### ENVIRONMENTAL PROPERTIES

**TEMPERATURE RATING:** -55°C TO 125°C



### Ordering Information

NUM PINS	CATALOG NUMBER BY MOUNTING STYLE				DIMENSIONS		
	BASIC CONNECTOR WITH THRU HOLES	ROUND STANDOFF #4-40 THREAD	FLUSH INSERT #4-40 THREAD	HIGH W STANDOFF #4-THREADED INSERT			
9	H2M09ST29A	H2M09ST29B	H2M09ST29C	H2M09ST29J	1.224	.984	.666
15	H2M15ST29A	H2M15ST29B	H2M15ST29C	H2M15ST29J	1.552	1.312	.994
25	H2M25ST29A	H2M25ST29B	H2M25ST29C	H2M25ST29J	2.092	1.852	1.534
37	H2M37ST29A	H2M37ST29B	H2M37ST29C	H2M37ST29J	2.740	2.500	2.183