



Non-Insulated Terminals Turret Hollow Miniature

Please refer to Figure 1390

Part No.	Board Thick	Mounting Hole Dia	+0.003 -0.001	D Nom	L Nom	Swage Tool
1390A	.031	.081		.079	.075	1390
1390B	.062	.081		.079	.105	1390
1390C	.094	.081		.079	.135	1390
1390D	.125	.081		.079	.165	1390

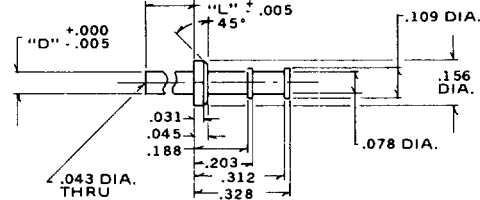


Fig. 1390

Please refer to Figure 1200

Part No.	Board Thick	Mounting Hole Dia	+0.003 -0.001	D Nom	L Nom	Swage Tool
1200A	.031	.116		.114	.075	1200
1200B	.062	.116		.114	.105	1200
1200C	.094	.116		.114	.135	1200
1200D	.125	.116		.114	.165	1200
1200E	.155	.116		.114	.195	1200

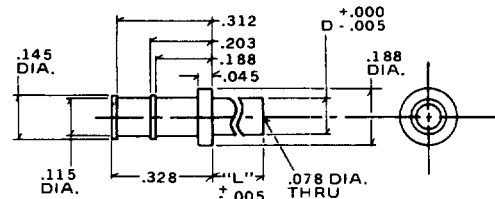


Fig. 1200

Please refer to Figure 1330

Part No.	Board Thick	Mounting Hole Dia	+0.003 -0.001	D Nom	L Nom	Swage Tool
1330B	.062	.137		.135	.105	1330
1330C	.094	.137		.135	.135	1330
1330D	.125	.137		.135	.165	1330

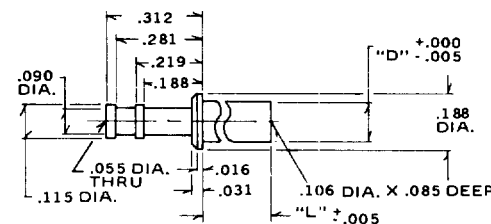


Fig. 1330

Please refer to Figure 1260

Part No.	Board Thick	Mounting Hole Dia	+0.003 -0.001	D Nom	L Nom	Swage Tool
1260B	.062	.116		.114	.105	1260
1260C	.094	.116		.114	.135	1260
1260D	.125	.116		.114	.165	1260

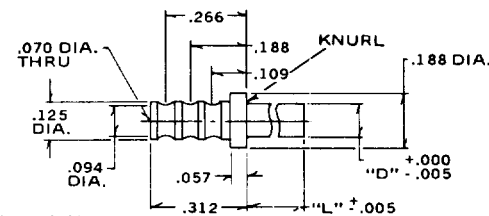


Fig. 1260

Please refer to Figure 1380

Part No.	Board Thick	Mounting Hole Dia	+0.003 -0.001	D Nom	L Nom	Swage Tool
1380B	.062	.116		.114	.105	1380
1380C	.094	.116		.114	.135	1380
1380D	.125	.116		.114	.165	1380

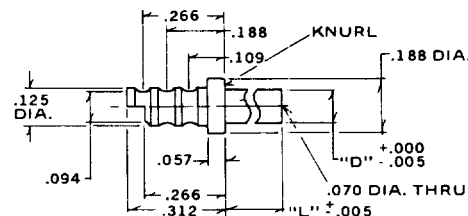


Fig. 1380

Standard Plating Suffix to Part Number
See Page 93 for all plating options.

Terminal
-1 (Ag over Cu)

TOLERANCE: .xxx ± .005, .xx ± .01 (ALL DIMS. BEFORE PLATING)

