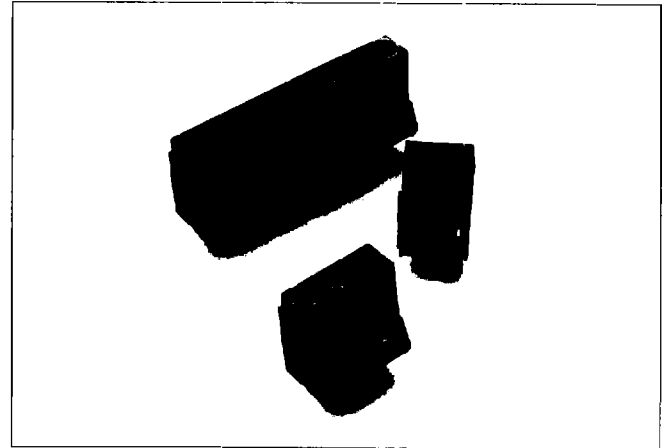




Features

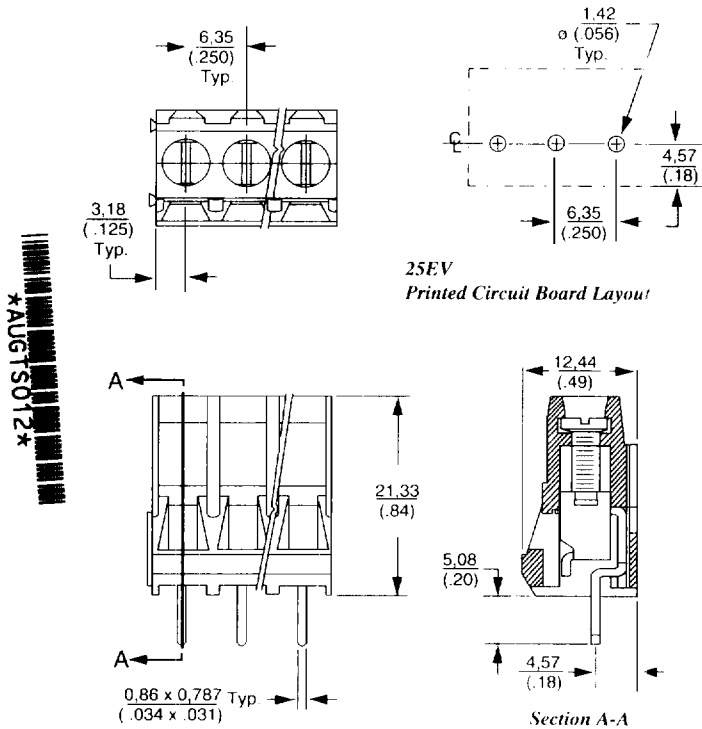
- Superior Elevator Wire-Clamp Contact Connections on .250" (6,35mm) Centers
- Modular Housing: End to End Stackability with Integral Interlocking Tabs
- Dead Front Design Protects Against Shock
- Standoffs for Flux Cleaning
- Captive M3 Screws
- High Temperature Housing Withstands Wave Line Temperatures
- Optional Terminal Identification Available on Front Surface
- In Accordance with VDE0110
- 2 thru 24 Terminal Positions



Specifications

Housing Material	Thermoplastic Polyester, UL recognized flammability classification 94V-0 120° C max. operating temperature.
Terminals	Bright acid-tin plated copper alloy
Solderability	MIL STD 202, Method 208
Elevator Box	Zinc plated steel with yellow chromate coating
Screws	Zinc plated steel with yellow chromate coating, M3
Rating	10 Amps, 300 Volts / 15 Amps, 150 Volts (limited ratings)  
Wire Range	10-22 AWG
Max Tightening Torque	5.0 lb. inch

UL FILE NO. E54800 CSA FILE NO. LR30811

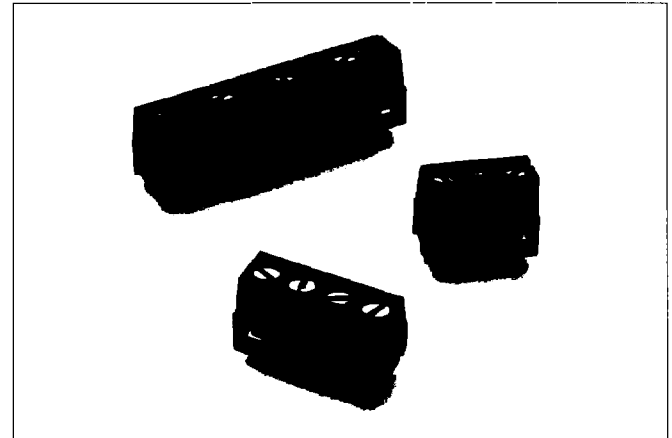


Augat/RDI Catalog Number


Number Terminal Positions	Color Green	Color Black	Number Terminal Positions	Color Green	Color Black
2	25EV-02	25EV-02-1	14	25EV-14	25EV-14-1
3	25EV-03	25EV-03-1	15	25EV-15	25EV-15-1
4	25EV-04	25EV-04-1	16	25EV-16	25EV-16-1
5	25EV-05	25EV-05-1	17	25EV-17	25EV-17-1
6	25EV-06	25EV-06-1	18	25EV-18	25EV-18-1
7	25EV-07	25EV-07-1	19	25EV-19	25EV-19-1
8	25EV-08	25EV-08-1	20	25EV-20	25EV-20-1
9	25EV-09	25EV-09-1	21	25EV-21	25EV-21-1
10	25EV-10	25EV-10-1	22	25EV-22	25EV-22-1
11	25EV-11	25EV-11-1	23	25EV-23	25EV-23-1
12	25EV-12	25EV-12-1	24	25EV-24	25EV-24-1
13	25EV-13	25EV-13-1			

Features

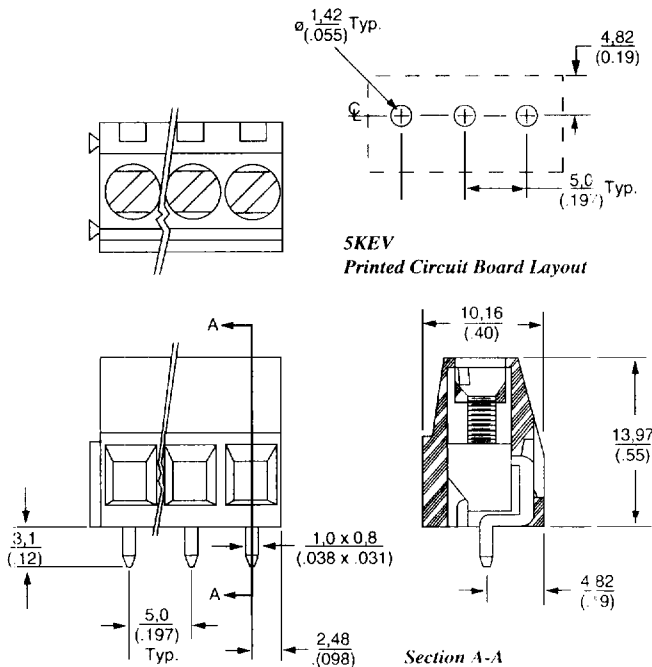
- Superior Elevator Wire-Clamp Contact
- High density: Connections on 5mm (.197") Centers
- Modular Housing: End to End Stackability with Integral Interlocking Tabs
- Dead Front Design Protects Against Shock
- Captive M2.6 Screws
- High Temperature Housing Withstands Wave Line Temperatures
- Optional Terminal Identification Available on Front Surface
- In Accordance with VDE0110
- 2 thru 24 Terminal Positions



Specifications

Housing Material	Thermoplastic Polyester, UL recognized flammability classification 94V-0, 120° C max. operating temperature.
Terminals	Bright acid-tin plated copper alloy
Solderability	MIL STD 202, Method 208
Elevator Box	Zinc plated steel with yellow chromate coating
Screws	Zinc plated steel with yellow chromate coating, M2.6
Rating	10 Amps, 300 Volts / 15 Amps, 150 Volts (limited ratings) 
Wire Range	12-22 AWG
Max tightening Torque	5.0 lb inch

UL File No. E54800 CSA File No. LR30811



Augat/RDI Catalog Number

Number Terminal Positions	Color		Number Terminal Positions	Color	
	Green	Black		Green	Black
2	5KEV-02	5KEV-02-1	14	5KEV-14	5KEV-14-1
3	5KEV-03	5KEV-03-1	15	5KEV-15	5KEV-15-1
4	5KEV-04	5KEV-04-1	16	5KEV-16	5KEV-16-1
5	5KEV-05	5KEV-05-1	17	5KEV-17	5KEV-17-1
6	5KEV-06	5KEV-06-1	18	5KEV-18	5KEV-18-1
7	5KEV-07	5KEV-07-1	19	5KEV-19	5KEV-19-1
8	5KEV-08	5KEV-08-1	20	5KEV-20	5KEV-20-1
9	5KEV-09	5KEV-09-1	21	5KEV-21	5KEV-21-1
10	5KEV-10	5KEV-10-1	22	5KEV-22	5KEV-22-1
11	5KEV-11	5KEV-11-1	23	5KEV-23	5KEV-23-1
12	5KEV-12	5KEV-12-1	24	5KEV-24	5KEV-24-1
13	5KEV-13	5KEV-13-1			