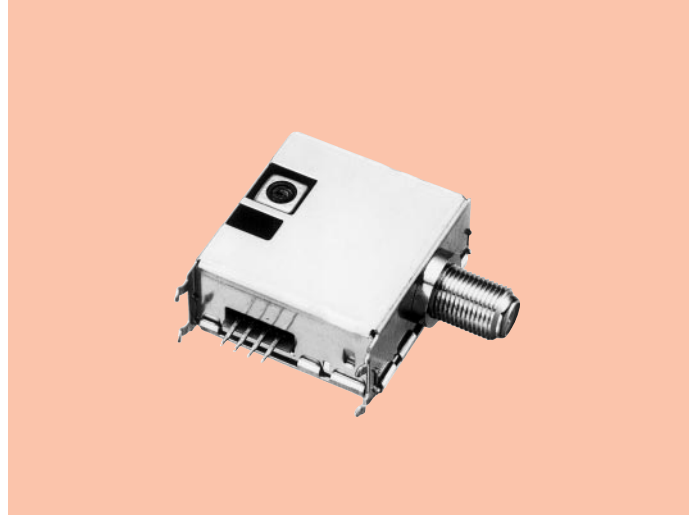


RF Modulator for VCR and CATV MD20-VA2330

OUTLINE

MD20 series are compact RF modulators developed for VCR and CATV and especially designed for use in instruments operating with low supply voltages.



FEATURES

1. Compact and light weight, ideal for VCR and CATV.
2. A change of channel is electronic change system.
3. High performance for SAW resonator and IC use.

SPECIFICATIONS

General Specifications

Item	Model	MD20-VA2330 (America)
Rating Supply Voltage		5V
Current Consumption		15mA max.
Operating Temperature Range		0~60°C
RF Output Impedance		75Ω

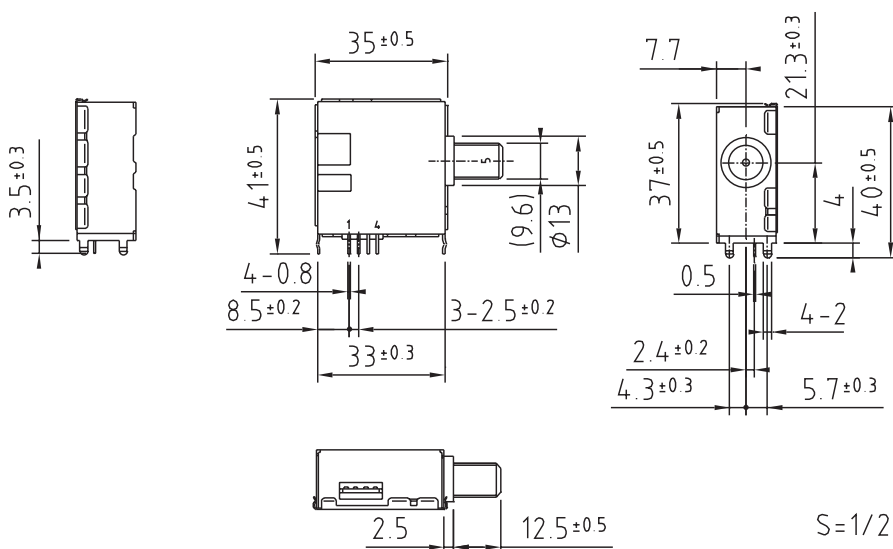
Electrical Specifications

Video Carrier Output	69 ⁺³ / ₋₃ dB μ
Video Carrier Frequency	55.250 61.250 MHz
Video Percent Modulation	81.25 \pm 10%
Output V.S.W.R.	3 max.
Spurious Signals within Assigned Band	60dB max.
Other Spurious Signals	-30dB max.
Audio Sub-Carrier Frequency	4.500 \pm 0.008MHz
Audio FM Deviation	50 \pm 10kHz
Video to Audio Level Ratio	12 \pm 3dB
Video Carrier Frequency Drift vs. Ambient Temperature	\pm 0.150MHz
Audio Sub-Carrier Frequency Drift vs. Ambient Temperature	\pm 0.020MHz
Video Signal Input Waveform	2.248Vp-p
Audio Signal Input Waveform	1.0Vp-p

*Specifications may be changed without notice.

*0-55°C

DIMENSIONS



Unit : mm, General tolerance : \pm 1.0

TERMINALS	
1.	VIDEO SIG. INPUT
2.	CHANNEL SELECT
3.	AUDIO SIG. INPUT
4.	+B
5.	RF OUTPUT
Case : GROUND	

NOTE : CHANNEL SELECT	
+B	3CH
GROUND	2CH