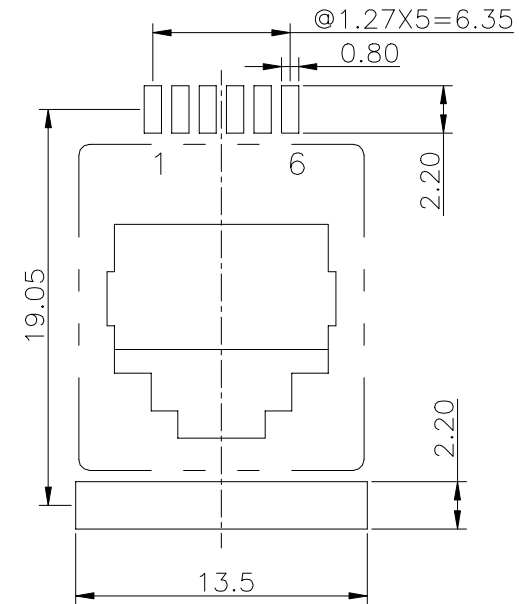
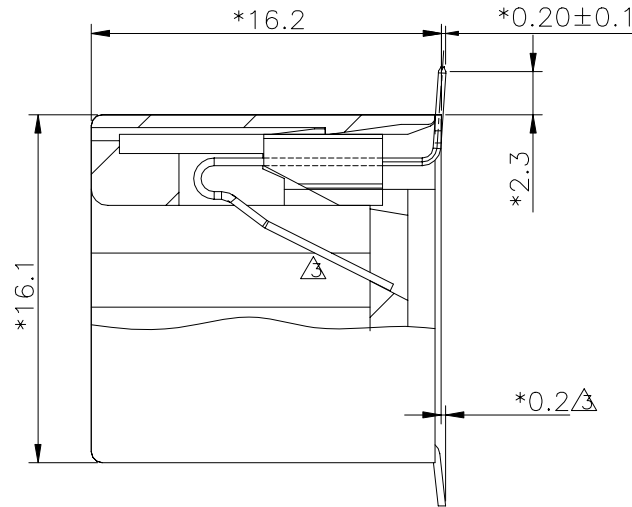
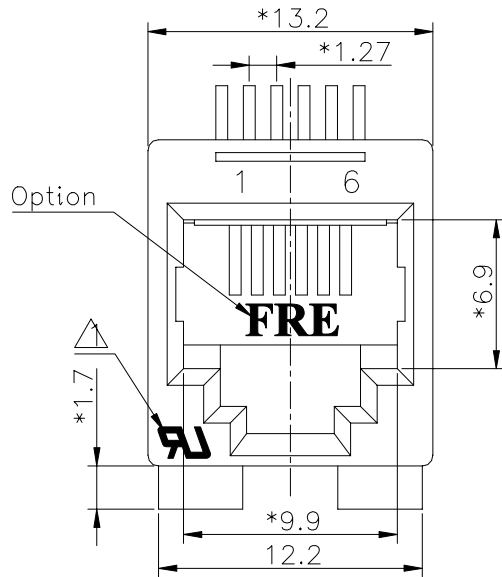


A1RFRD10

REVISION RECORD				
REV	ECO	DESCRIPTION	DRFT	CHKD
△		Drawing Modify	sammy 09/11/03	
△		ADD P/N	WATERS 09/16/03	H
△		Modify Drawing	sammy 04/14/04	
△		Modify Notes	Among 10/22/04	
△		MODIFY DRAWING	ANKUE 08/15/06	



PCB LAYOUT (COMPONENT SIDE VIEW)

NOTES:

ELECTRICAL:

- VOLTAGE RATING : 125 VAC RMS.
- CURRENT RATING : 1.5 AMP.
- CONTACT RESISTANCE : 30 MILLIOHMS MAX.
- INSULATION RESISTANCE: 1000 MEGOHMS MIN @ 500 VDC.
- DIELECTRIC STRENGTH : 1000 VAC RMS 60Hz, 1MIN.

MECHANICAL:

- HOUSING MATERIAL : NYLON+GF30% UL94V-0.\COLOR:BLACK.
- CONTACT MATERIAL : PHOSPHOR BRONZE t=0.35mm.
- PLATING : GOLD PLATING OVER NICKEL.
- OPERATING LIFE : 750 CYCLES MIN.
- PCB RETENTION POST-SOLDER: 10 LBS MIN.

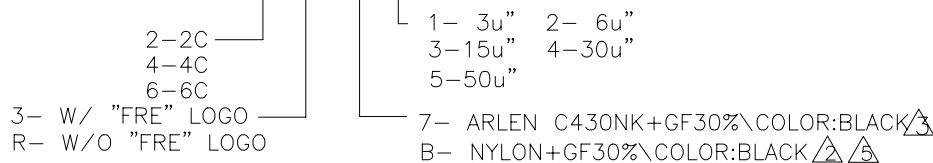
ENVIRONMENTAL:

- STORAGE : -40°C TO +85°C.
- OPERATION: -40°C TO +85°C.
- IR REFLOW PEAK SOLDERING TEMPERTURE: 255°C~265°C 5~10 SECONDS.

MATES WITH MODULAR PLUG CONFORMING TO FCC PART 68, SUBPART F.

CUL FILE NO. E163191

△ PART NUMBER: E526X-X00XBX



5-0313-1

DETACHED LISTS	MM (INCH)	DFTO JAMIE	DATE 8/20/97	FULL RISE ELECTRONIC CO., LTD		
	TOLERANCES EXCEPT AS NOTED	CHKD YILAN	DATE 2006/8/16			
	MM	MFO	DATE	TITLE TOP ENTRY PCB JACK 6P SMD		
	.0 ± 0.2	APPVLLUSHENG	DATE 2006/8/16			
.00 ± 0.15	MATERIAL :	QT'Y :	DRAWING NO. GE523062		SIZE A3	REV 5
.000 ± 0.075	FINISH :	SCALE : 4:1	/PART NO. SEE NOTE		SHEET 1 OF 1	
ANGLES ± 0.5	THIRD ANGLE PROJECTION		DO NOT SCALE DRAWING			