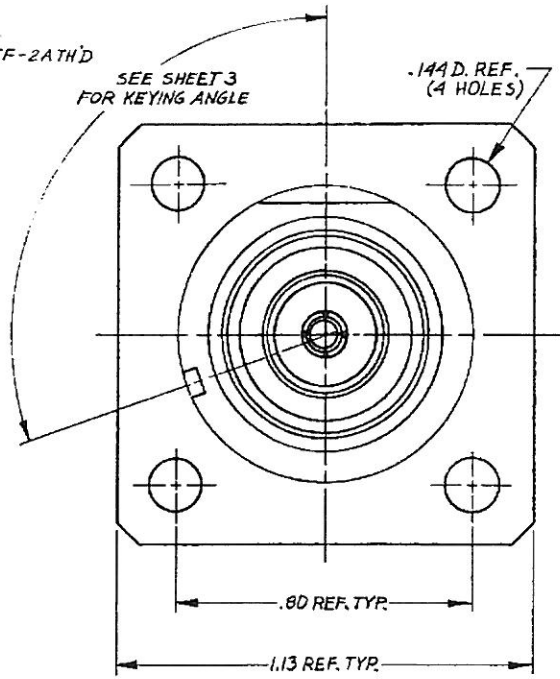
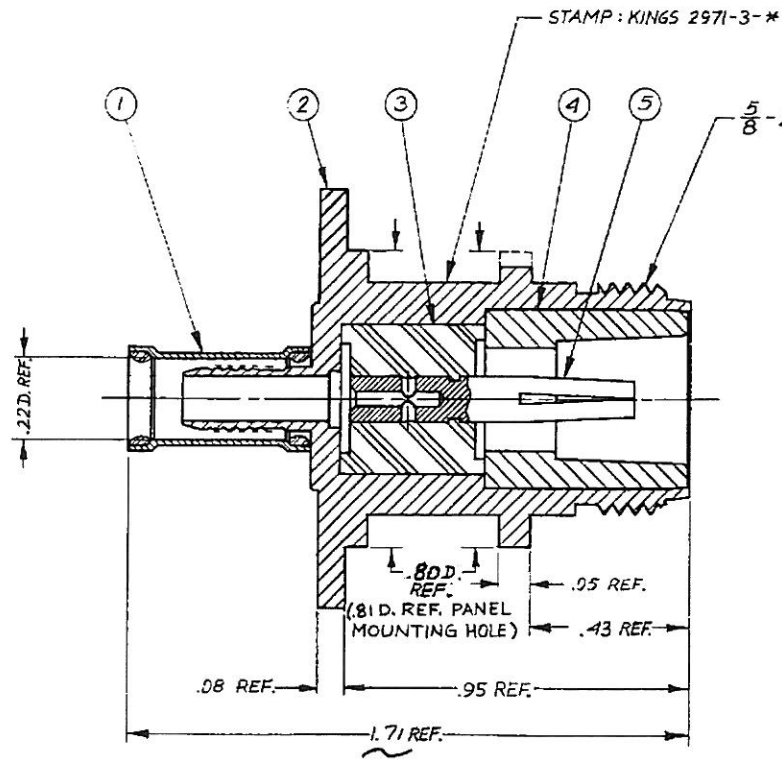


DASH NO	M CODE	MADE FROM
---------	--------	-----------

S-D

2971-3-*
(SHEET 1 OF 3)

REVISIONS	
ISSUE	CHANGES
0	ER 30902 KH 8JUN89
1	CN 31122 A JCA 13SEP89



NOTES:

1. FOR USE WITH RG-142 B, 223/U & TIMES AA6343 CABLES.
2. FOR CRIMPING USE DIE SIZE 101.
3. FOR CABLING INSTRUCTIONS SEE CP-5406.
4. FOR CABLE TRIMMING USE RTJ-160 & KTD-208.
5. ITEM ⑤ TO BE SUPPLIED UNASSEMBLED.
6. ITEMS ①, ② & ④ TO HAVE KINGS TARNISH RESISTANT FINISH (TR-5).
7. FOR USE WITH .075 MAX. PANEL.
8. INTERFACE PER MIL-STD-348 FIG. 304-2.

9. MARK PACKAGE:
KINGS 2971-3-*
XXXX (DATE CODE)
- SEE SHEET 3

UNLESS OTHERWISE SPECIFIED:

- | | |
|--|---|
| 1. TOLERANCES FRACTIONS & 2 PLACED DECIMALS ± 0.10 | 2. REMOVE ALL BURRS, BREAK SHARP EDGES .005 MAX |
| 3 PLACED DECIMALS ± .004 | 3. NO FILLETS PERMITTED. |
| ANGLES ± 0°30' | 4. SURFACE ROUGHNESS 63 MICROINCHES RMS MAX. |
| T & R CONCENTRICITY OF ANY 2 DIAMETERS MAY NOT EXCEED HALF THE SUM OF THEIR TOLERANCES | 5. ALL DIMENSIONS PRIOR TO PLATING. |
| | 6. ALL PLATING IN ACCORDANCE WITH KER 10004. |

SCALE	3:1
APPROX SURFACE AREA	
WAS:	E-15738 A-Y
USED ON	
REF	BOEING
N PANEL JACK KEYED	
DRAWN	M.Z.B. DATE 8 MAY 89
APPR	LT DATE 15 MAY 89
APPR	DATE
KINGS ELECTRONICS CO. INC. LITTLE ROCK, ARK.	
2971-3-* (SHEET 1 OF 3)	

S-D

DASH NO. M-CODE MADE FROM

KINGS PART NO.	KEYING ANGLE
2971-3-1	42°
2971-3-2	54°
2971-3-3	66°
2971-3-4	78°
2971-3-5	90°
2971-3-6	102°
2971-3-7	114°
2971-3-8	126°
2971-3-9	138°
2971-3-10	150°
2971-3-11	162°
2971-3-12	174°
2971-3-13	186°
2971-3-14	194°
2971-3-15	210°
2971-3-16	222°
2971-3-17	234°
2971-3-18	246°
2971-3-19	258°
2971-3-20	270°
2971-3-21	282°
2971-3-22	294°
2971-3-23	306°
2971-3-24	318°

2971-3-*
(SHEET 3 OF 3)

REVISIONS

ISSUE	CHANGES
0	ER 30902 KH 8JUN89
1	CN 31122 A JCA 13 SEP 89

S-D

SCALE

APPROX SURFACE AREA

USED ON

REF

PART NO. & ANGLE TABLE

DRAWN M.Z.B.	DATE 9 MAY 89
APPR CT	DATE 15 MAY 89
APPR	DATE



2971-3-*
(SHEET 3 OF 3)

UNLESS OTHERWISE SPECIFIED:

- 1. TOLERANCES: FRACTIONS & 2 PLACE DECIMALS ± .010
- 3 PLACE DECIMALS ± .004
- 2. ANGLES ± 0°30'
- 3. CONCENTRICITY OF ANY 2 DIAMETERS MAY

- 2. REMOVE ALL BURRS, BREAK SHARP EDGES .005 MAX.
- 3. NO FILLETS PERMITTED.
- 4. SURFACE ROUGHNESS 63 MICROINCHES RMS MAX.
- 5. ALL DIMENSIONS PRIOR TO PLATING.