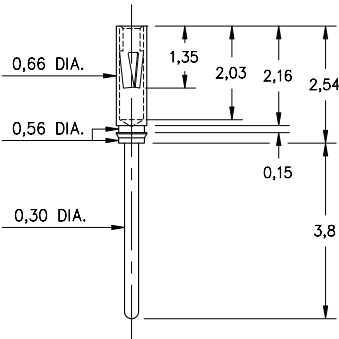
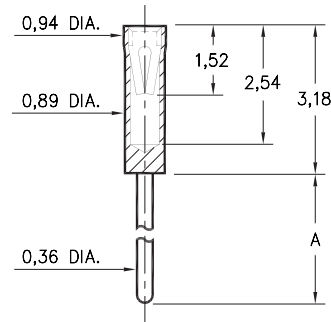


8210



8210-0-15-15-04-27-04-0
 Press-fit in 0,61/0,68 stepped hole

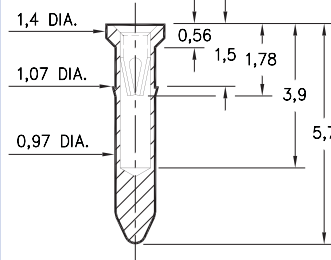
0464



0464-X-15-XX-10-XX-04-0
 Solder mount in 0,41 min. mounting hole

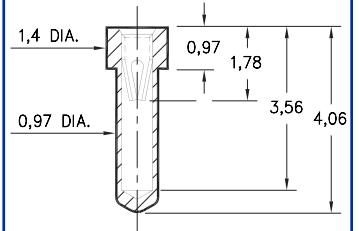
Basic Part Number	Length A
0464-0	3,18
0464-1	6,35

9225



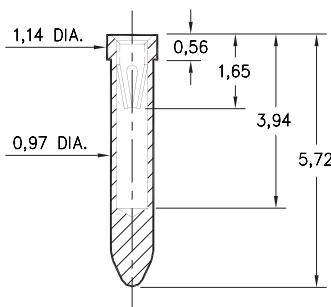
9225-0-15-XX-10-XX-10-0
 Press-fit in 1,0 mounting hole

0529



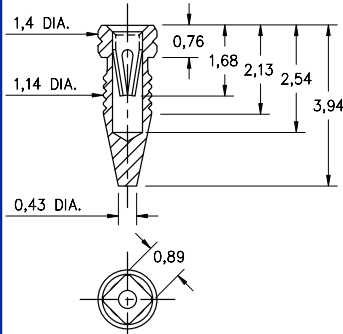
0529-0-15-XX-10-XX-10-0
 Solder mount in 1,02 min. mounting hole

8947



8947-0-15-XX-10-XX-10-0
 Solder mount in 1,02 min. mounting hole

4993



4993-0-15-15-10-27-40-0
 Compliant press-fit in 1,04 - 1,12 Dia. mounting hole

SPECIFICATIONS

SHELL MATERIAL:
 Brass Alloy 360, 1/2 Hard

CONTACT MATERIAL:
 Beryllium Copper Alloy 172, HT

DIMENSION IN INCHES
TOLERANCES ON:
 LENGTHS: ±0,13
 DIAMETERS: ±0,05
 ANGLES: ± 2°

ORDER CODE: XXXX - X - XX - XX - XX - XX - XX - 0

BASIC PART #

SPECIFY SHELL FINISH:

- 01 5,08µm TIN/LEAD OVER NICKEL
- ◇ 80 5,08µm TIN OVER NICKEL (RoHS)
- ◇ 15 0,25µm GOLD OVER NICKEL (RoHS)

SPECIFY CONTACT FINISH:

- 02 2,54µm TIN/LEAD OVER NICKEL
- ◇ 84 2,54µm TIN OVER NICKEL (RoHS)
- ◇ 27 0,76µm GOLD OVER NICKEL (RoHS)

SELECT CONTACT

#04 or #10 CONTACT (DATA ON PAGE 216)
 (CONTACTS #04 & #10 NOT INTERCHANGEABLE)

