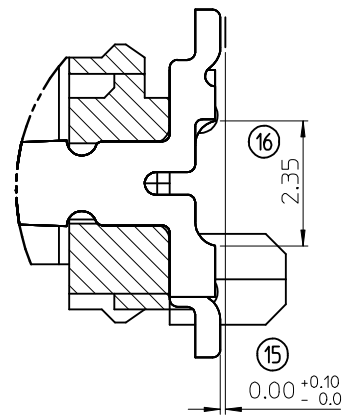
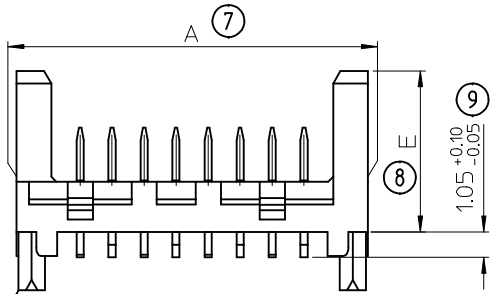


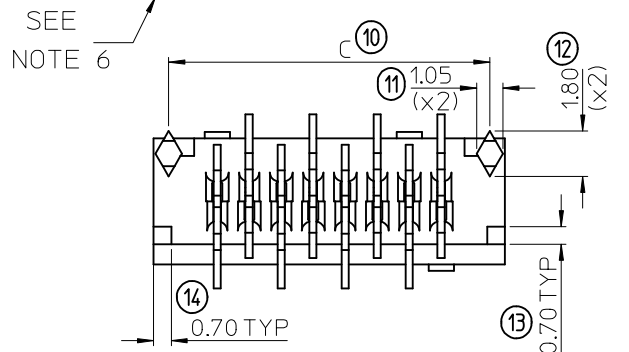
93405 - \*\* \*\*  
CIRCUIT SIZE

	PCB PEGS	TUBE PACKED	TAPE & REEL PACKED	POLARIZING PEG HEIGHT DIMN. E
0	YES	YES	NO	6.40
2	YES	NO	YES	6.40
3	NO	YES	NO	6.40
5	NO	NO	YES	6.40
6	NO	YES	NO	4.10
7	NO	NO	YES	4.10
8	YES	YES	NO	4.10
9	YES	NO	YES	4.10

0= 3-5 MICROMETRE TIN VERSION  
3= 0.6 MICROMETRE PALLADIUM NICKEL VERSION



DETAIL 1  
SCALE 10:1



PART NO.	NUMBER OF CKTS	DIMN. A	DIMN. B	DIMN. C	QUANTITY OF PARTS PER TUBE (-#0**/-#3**/-#6** & -#8** VERSIONS)	TOOLED
93405-**26	26	36.80	31.75	35.60	14	YES
93405-**24	24	34.26	29.21	33.06	15	YES
93405-**22	22	31.72	26.67	30.52	16	YES
93405-**20	20	29.18	24.13	27.98	18	YES
93405-**18	18	26.64	21.59	25.44	20	YES
93405-**16	16	24.10	19.05	22.90	22	YES
93405-**14	14	21.56	16.51	20.36	25	YES
93405-**12	12	19.02	13.97	17.82	28	YES
93405-**10	10	16.48	11.43	15.28	32	YES
93405-**08	8	13.94	8.89	12.74	38	YES
93405-**06	6	11.40	6.35	10.20	46	YES
93405-**04	4	8.86	3.81	7.66	60	YES

- NOTES:
- MATERIAL: HOUSING: NYLON (PA) GLASS FILLED, UL94 V-0, NATURAL (BEIGE)  
TERMINAL: CARTRIDGE BRASS 0.28 REF THICK
  - PLATING: TIN (Sn) 3-5 MICROMETRE MIN OVER 1.27 MICROMETRE MIN NICKEL (Ni), PALLADIUM NICKEL (PdNi): 0.6 MICROMETRE SELECTIVE PdNi WITH 0.05 MICROMETRE GOLD FLASH IN CONTACT AREA AND 3-5 MICROMETRE SELECTIVE TIN IN SOLDER AREA ALL OVER 1.27 MICROMETRE NICKEL (Ni) UNDERCOAT.
  - MATES WITH MOLEX 90327 SERIES.
  - ALL SMT TAILS TO LIE WITHIN A COPLANARITY BAND OF 0.0 - 0.10 REF. FROM EACH OTHER.
  - FOR TAPE AND REEL PACKAGING SEE SDA-90814-9001.  
FOR TUBE PACKAGING SEE PK-90814-001.
  - PCB PEGS ARE OPTIONAL.
  - PCB LAYOUT SHOWN ON SHEET 2
  - PRODUCT SPECIFICATION: PS-99020-0011.

MODIFIED PCB DIM.	QUALITY SYMBOLS
EC NO: IPG2013-0901	▽=0
DRWN:DBYRNES 2013/01/18	◻=0
CHKD:MAHER 2013/01/22	
APPR:STGRIFFIN 2013/01/23	
REV	DESCRIPTION

GENERAL TOLERANCES (UNLESS SPECIFIED)

	mm	INCH
4 PLACES	± ---	± ---
3 PLACES	± ---	± ---
2 PLACES	± 0.10	± ---
1 PLACE	± 0.2	± ---
0 PLACE	± ---	± ---

ANGULAR ± 2 °  
DRAFT WHERE APPLICABLE  
MUST REMAIN WITHIN DIMENSIONS

DIMENSION STYLE MM ONLY	
DRAWN BY DBYRNES	DATE 2012/05/28
CHECKED BY DSHEA	DATE 2012/06/22
APPROVED BY EFOLAN	DATE 2012/06/27
MATERIAL NO.	

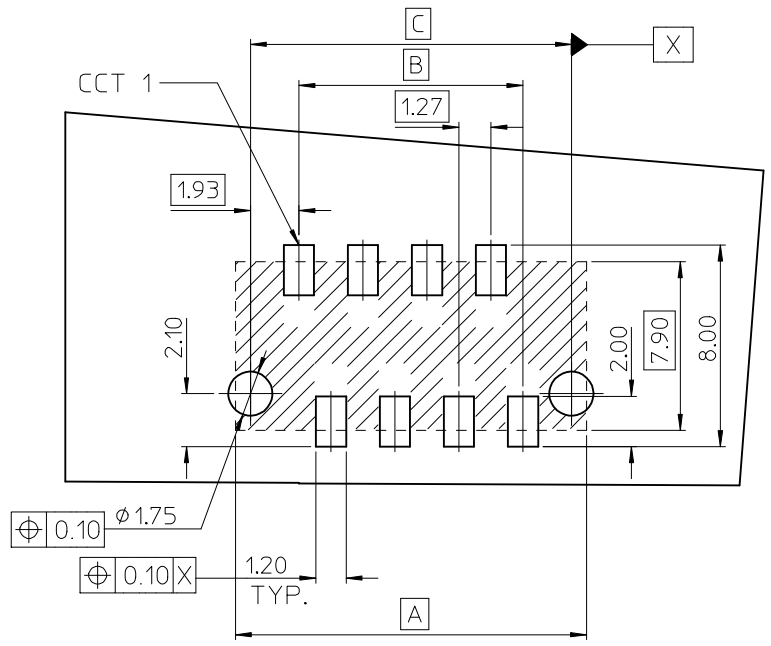
SCALE 5:1  
DESIGN UNITS METRIC  
THIRD ANGLE PROJECTION

REVERSE FOOTPRINT  
PICOFLEX SMT HEADER

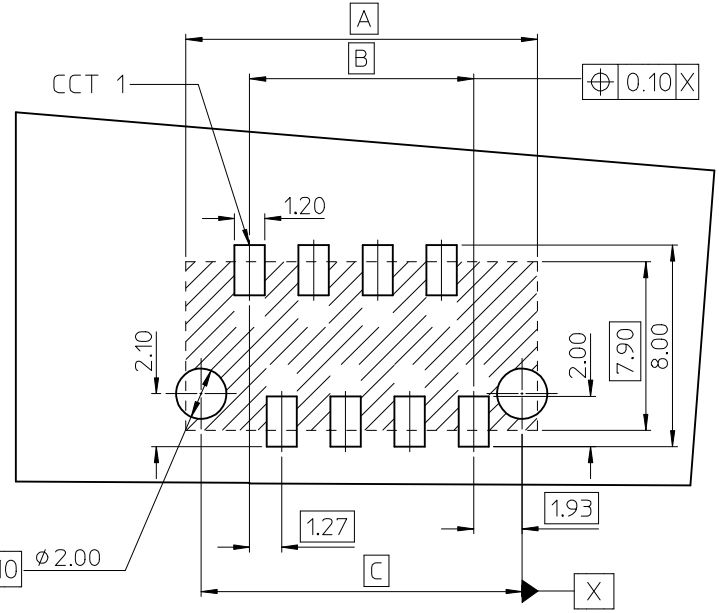
**molex**

DOCUMENT NO. SD-93405-001  
SHEET NO. 1 OF 2

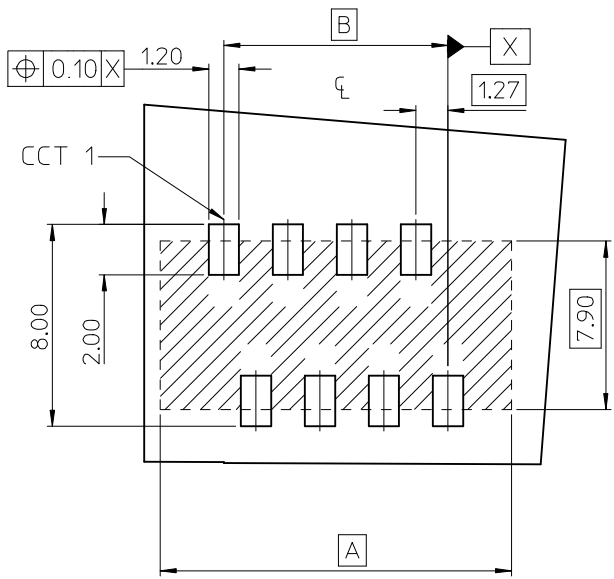
THIS DRAWING CONTAINS INFORMATION THAT IS PROPRIETARY TO MOLEX INCORPORATED AND SHOULD NOT BE USED WITHOUT WRITTEN PERMISSION



PCB LAYOUT FOR HEADERS WITH TRANSITION FIT PCB PEGS  
HEADER VERSIONS 93405-\*0\*\*/-\*2\*\*/-\*8\*\*/-\*9\*\*.



PCB LAYOUT FOR HEADERS WITH CLEARANCE FIT PCB PEGS  
HEADER VERSIONS 93405-\*0\*\*/-\*2\*\*/-\*8\*\*/-\*9\*\*.



PCB LAYOUT FOR HEADERS WITHOUT PCB PEGS  
HEADER VERSIONS 93405-\*3\*\*/-\*5\*\*/-\*6\*\*/-\*7\*\*.

RECOMMENDED  
REFERENCE DIMENSIONS ONLY  
VIEWED FROM COMPONENT SIDE  
PCB THICKNESS 1.60±0.14

93405-*26	26	36.80	31.75	35.60
93405-*24	24	34.26	29.21	33.06
93405-*22	22	31.72	26.67	30.52
93405-*20	20	29.18	24.13	27.98
93405-*18	18	26.64	21.59	25.44
93405-*16	16	24.10	19.05	22.90
93405-*14	14	21.56	16.51	20.36
93405-*12	12	19.02	13.97	17.82
93405-*10	10	16.48	11.43	15.28
93405-*08	8	13.94	8.89	12.74
93405-*06	6	11.40	6.35	10.20
93405-*04	4	8.86	3.81	7.66
PART NO.	NUMBER OF CKTS	DIMN. A	DIMN. B	DIMN. C

<b>MODIFIED PCB DIMS</b> EC NO: IPG2013-0901 DRWN:DBYRNES 2013/01/18 CHYK:DMAHER 2013/01/22 APPR:STGRIFFIN 2013/01/23	QUALITY SYMBOLS	GENERAL TOLERANCES (UNLESS SPECIFIED)	DIMENSION STYLE	SCALE	DESIGN UNITS	THIRD ANGLE PROJECTION
	▼=0 ◻=0	mm    INCH 4 PLACES ± --- ± --- 3 PLACES ± --- ± --- 2 PLACES ± 0.10 ± --- 1 PLACE ± 0.2 ± --- 0 PLACE ± --- ± ---	MM ONLY	5:1	METRIC	
	ANGULAR ± 2 ° DRAFT WHERE APPLICABLE MUST REMAIN WITHIN DIMENSIONS	DRAWN BY: DBYRNES    DATE: 2012/05/28 CHECKED BY: DSHEA    DATE: 2012/06/22 APPROVED BY: EFOLAN    DATE: 2012/06/27	TITLE	REVERSE FOOTPRINT PICO FLEX SMT HEADER		
		MATERIAL NO.    DOCUMENT NO.    SHEET NO.	SEE CHART	SD-93405-001 2 OF 2		