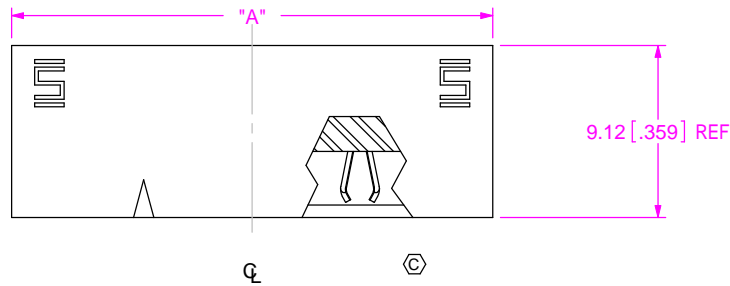


FIG.1
(UPT-04-01-X-RA-X SHOWN)

DO NOT
SCALE FROM
THIS PRINT



UPT-XX-01-XX-X-RA-XX-XX

No OF POSITIONS
-02: 2 POSITIONS
-04: 4 POSITIONS
-06: 6 POSITIONS
-08: 8 POSITIONS

PACKAGING OPTION
-TR: TAPE AND REEL

LEAD STYLE
-01

OPTION

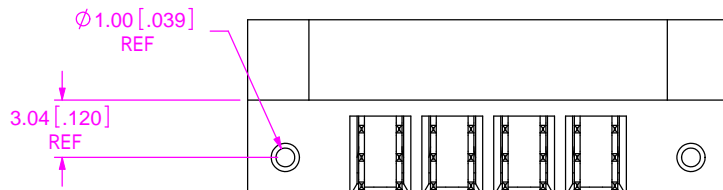
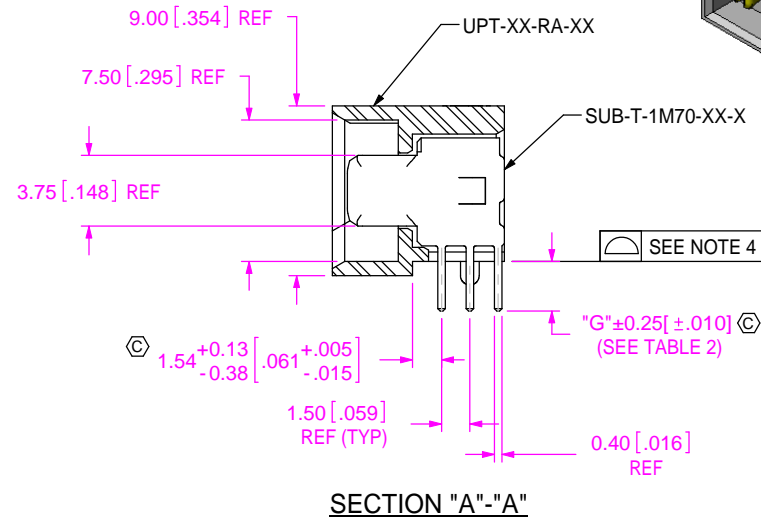
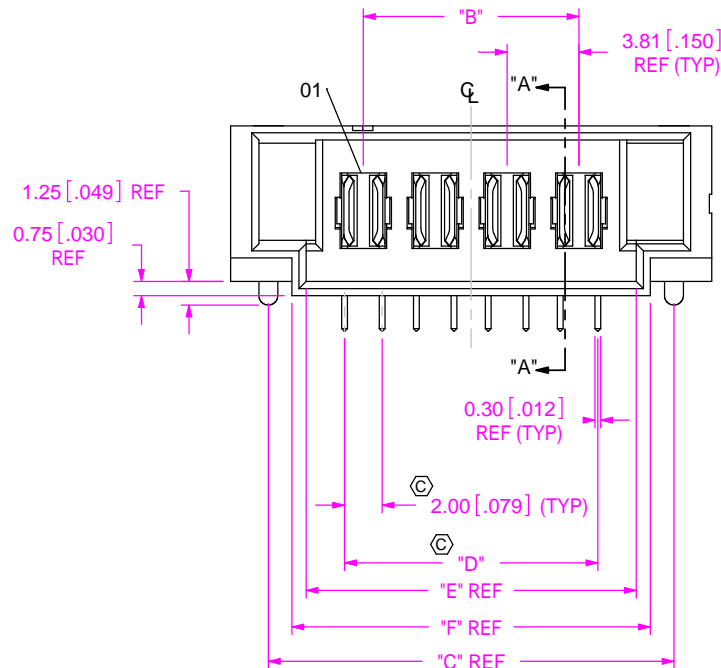
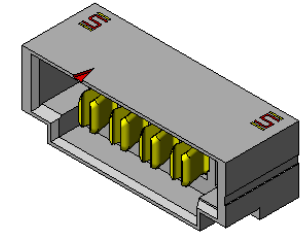
-LC: LOCKING CLIP
RIGHT ANGLE

TAIL LENGTH

-01: FOR 1.57[.062] THICK PCB
(USE SUB-T-1M70-01-X) (SEE FIG. 1)
-02: FOR 2.36[.093] THICK PCB
(USE SUB-T-1M70-02-X) (SEE FIG. 2)

PLATING

-L: (SEE TABLE 3)
-T: (SEE TABLE 3)



PART NUMBER	"A"	"B"	"C"	"D"	"E"	"F"
UPT-02-XX-X-RA-XX	17.88 [.704]	3.81 [.150]	13.88 [.546]	5.82 [.229]	9.88 [.389]	11.38 [.448]
UPT-04-XX-X-RA-XX	25.50 [1.004]	11.43 [.450]	21.50 [.846]	13.44 [.529]	17.50 [.689]	19.00 [.748]
UPT-06-XX-X-RA-XX	33.12 [1.304]	19.05 [.750]	29.12 [1.146]	21.06 [.829]	25.12 [.989]	26.62 [1.048]
UPT-08-XX-X-RA-XX	40.74 [1.604]	26.67 [1.050]	36.74 [1.446]	28.68 [1.129]	32.74 [1.289]	34.24 [1.348]

UNLESS OTHERWISE SPECIFIED,
DIMENSIONS ARE IN MILLIMETERS
TOLERANCES ARE:
DECIMALS ANGLES
X.X: ±0.3 [.01] 2°
X.XX: ±0.13 [.005]
X.XXX: ±0.051 [.0020]

PROPRIETARY NOTE
THIS DOCUMENT CONTAINS INFORMATION
CONFIDENTIAL AND PROPRIETARY TO
SAMTEC, INC. AND SHALL NOT BE REPRODUCED
OR TRANSFERRED TO OTHER DOCUMENTS OR
DISCLOSED TO OTHERS OR USED FOR ANY
PURPOSE OTHER THAN THAT WHICH IT WAS
OBTAINED WITHOUT THE EXPRESSED WRITTEN
CONSENT OF SAMTEC, INC.



520 PARK EAST BLVD, NEW ALBANY, IN 47150
PHONE: 812-944-6733 FAX: 812-948-5047
e-Mail: info@SAMTEC.com code: 55322

MATERIAL: DO NOT SCALE DRAWING SHEET SCALE 1:0.4
INSULATOR: LCP, COLOR: BLACK
TERMINAL: BeCu
LOCKING CLIP: PHOS BRONZE

DESCRIPTION: UPT-RA, ASSEMBLY
DWG. NO. UPT-XX-01-XX-X-RA-XX-XX
BY: B RAY 10/01/2008 SHEET 1 OF 2

NOTES:

- ① REPRESENTS A CRITICAL DIMENSION.
- BURR ALLOWANCE: 0.038[.0015]MAX.
- MINIMUM PUSHOUT FORCE: 4.5N[1.0 LB].
- MAXIMUM ALLOWABLE BOW: .15[.006].
- MINIMUM -LC PULL OUT FORCE: 2.23 N [0.5LB]

TAIL LENGTH	"G"	SUB-T-1M70-XX-X
-01	2.82 [0.111]	SUB-T-1M70-01-X
-02	3.58 [0.141]	SUB-T-1M70-02-X

FIG.2
(UPT-04-01-X-RA-X-LC SHOWN)
(SAME AS FIG. 1, DIFFERENT AS SHOWN)

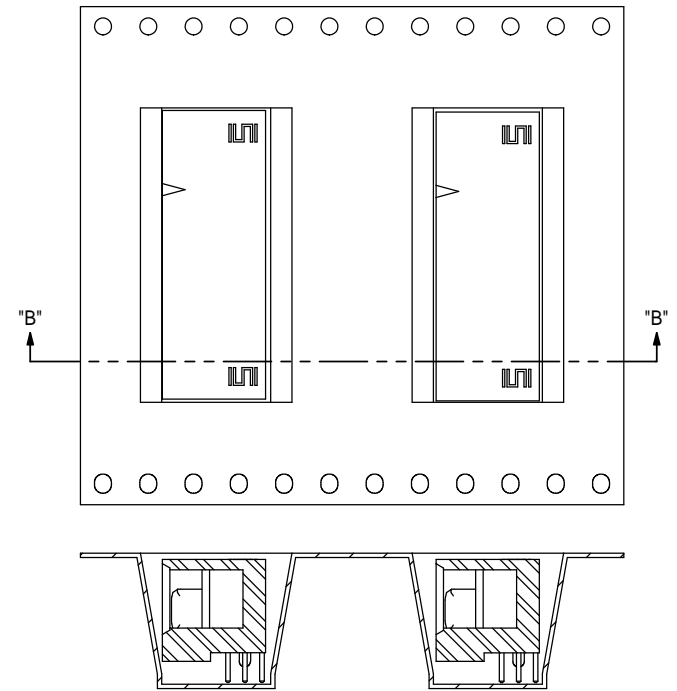
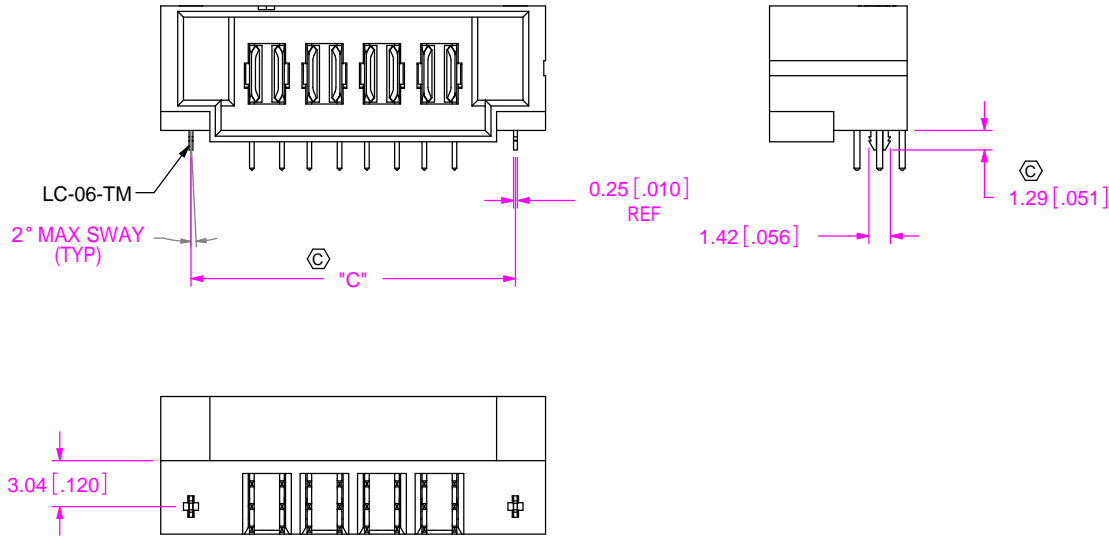
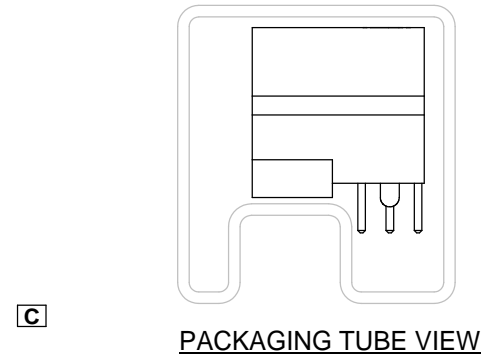


FIG.3
-TR: PACKAGING VIEW
TAPE AND REEL



PLATING	POWER PIN CONTACT AREA	POWER PIN TAIL
-L	LIGHT GOLD	MATTE TIN
-T	MATTE TIN	MATTE TIN

PROPRIETARY NOTE
THIS DOCUMENT CONTAINS INFORMATION CONFIDENTIAL AND PROPRIETARY TO SAMTEC, INC. AND SHALL NOT BE REPRODUCED OR TRANSFERRED TO OTHER DOCUMENTS OR DISCLOSED TO OTHERS OR USED FOR ANY PURPOSE OTHER THAN THAT WHICH IT WAS OBTAINED WITHOUT THE EXPRESSED WRITTEN CONSENT OF SAMTEC, INC.

DO NOT SCALE DRAWING

SHEET SCALE: 1:0.333333

samtec

520 PARK EAST BLVD, NEW ALBANY, IN 47150
PHONE: 812-944-6733 FAX: 812-948-5047
e-Mail: info@SAMTEC.com code: 55322

DESCRIPTION: UPT-RA, ASSEMBLY

DWG. NO. UPT-XX-01-XX-X-RA-XX-XX

BY: B RAY 10/01/2008 SHEET 2 OF 2