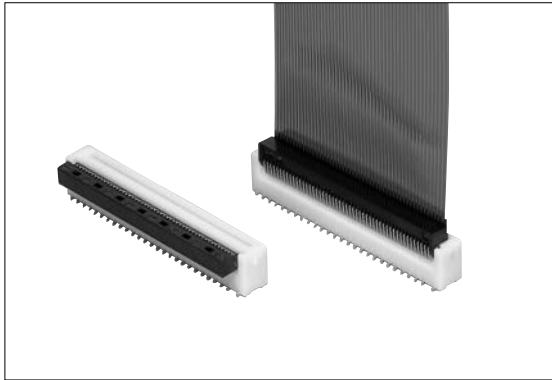


## FPC Connectors

# FP-5F Series 0.5mm Pitch, Vertical Flip Type (SMT)



### ■ Features

- Our original front flip structure ensures multi-pole products of high level contact reliability.
  - The structure which relieves the load from the cover when the FPC is locked will prevent detachment or breakage of the cover.
  - There are no restrictions to the direction in which the FPC can be laid.
- Low profile of 6.5mm height when mounted.
- Using the ZIF structure.
- Supplied in the embossed taping with automatic mounter, with a sucking space provided (without sucking tape).

### ■ Specification

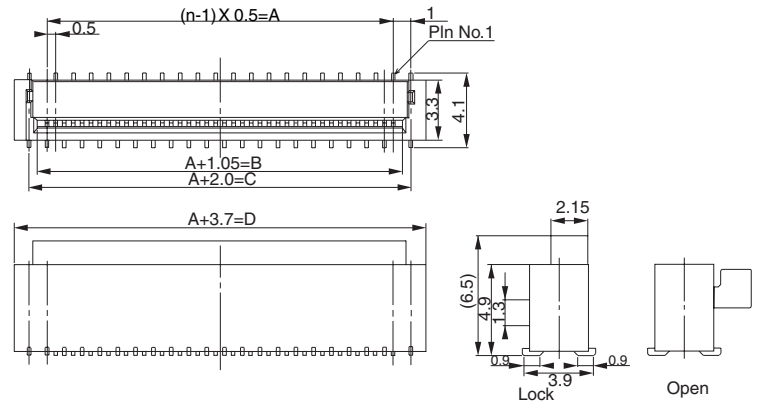
- Rating : 0.5A, 50V AC/DC
- Contact Resistance : 30mΩ, max.
- Insulation Resistance : 100MΩ, min. at 100V DC
- Withstanding Voltage : 100V AC (for one minute)
- Operating Temperature Range : -40°C to +85°C

### ■ Material and Plating

- Housing : Thermoplastic Resin, Natural Color, 94V-0
- Cover : Thermoplastic Resin, Black, 94V-0
- Contact : Cu Alloy, Au Plating
- Hold-down : Cu Alloy, Sn Plating

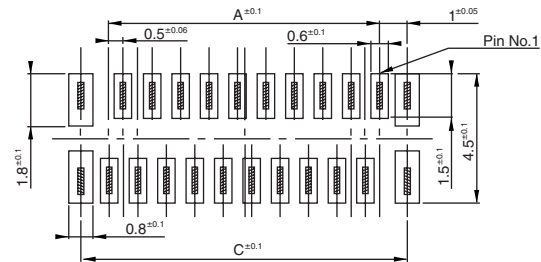
### ● CFP50 -0150F

↑ No. of Pins

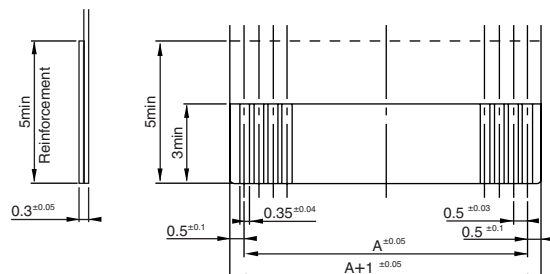


<input type="checkbox"/> <input type="checkbox"/> No. of Pins	A	B	C	D
32	15.5	16.55	17.5	19.2
50	24.5	25.55	26.5	28.2

### ■ P.C. Board Dimension



### ■ Applicable FPC Dimension (t=0.3±0.05)



- FPC plating to recommend : Au plating