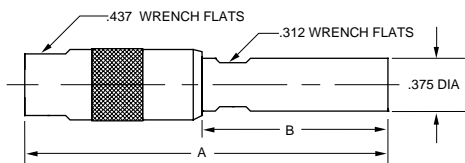


# STANDARD & MINI-WECO COAX PATCH PLUGS

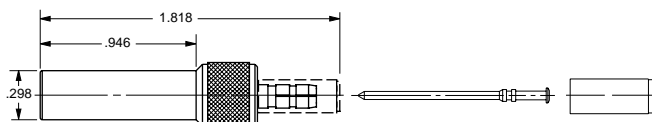


### PATCH PLUG

**SHIELD CRIMP** 50Ω RCA Center pin .070" A=2.73" B=1.50"  
75Ω WE Center pin .090" A=2.45" B=1.22"

**PL1C-△**  
**PL1WC-△**

(WECO 358 type)

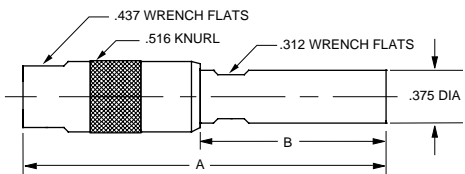


### PATCH PLUG

**STANDARD BNC STRIP DIMENSION**  
**CRIMP CONTACT, CRIMP SHIELD**

(WECO 440 Type)

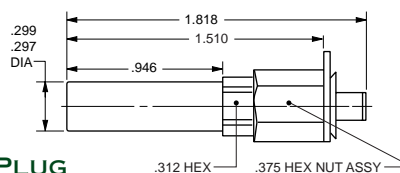
**PL11SC-△**



### PATCH PLUG

### CABLE ENTRY, FIELD SERVICEABLE

For RG58 **50Ω RCA Center pin .070"** A=2.80" B=1.568" ..... **PL1**  
For RG59 **50Ω RCA Center pin .070"** A=2.737" B=1.505" ..... **PL2**  
For RG58 **75Ω WE Center pin .090"** A=2.52" B=1.288" ..... **PL1W**  
For RG59 **75Ω WE Center pin .090"** A=2.457" B=1.225" ..... **PL2W**



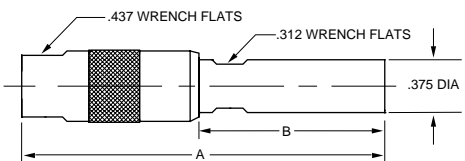
### PATCH PLUG

### STANDARD CRIMP PLUG

### WITH LOCKING TAB

(WECO 440 Type)

**PL11SCLT-△**



### TERMINATION PLUG

#### NO CHAIN

50Ω RCA Center pin .070"

A=2.81" B=1.58"

**TP-1-R**

#### NO CHAIN

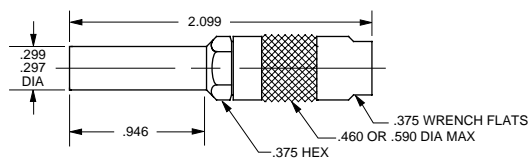
75Ω WE Center pin .090"

A=2.45" B=1.25"

**TPW-1-R**

For other chain options, see page 45.

(WECO 340C type)

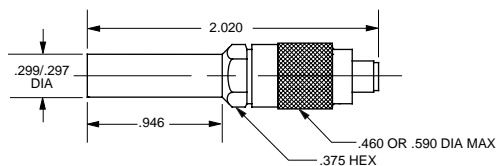


### PATCH PLUG

### SOLDER CONTACT, CRIMP SHIELD

(WECO 440 Type)

**PL11C-△**

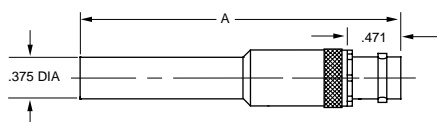


### PATCH PLUG

### CRIMP CONTACT, CRIMP SHIELD

(WECO 440 Type)

**PL11AC-△**



### ADAPTERS

### PATCH PLUG TO BNC/TNC

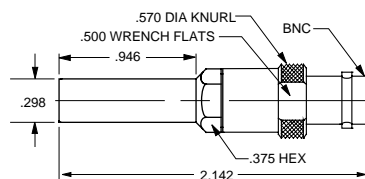
50Ω RCA plug Center pin .070" 50Ω BNC A =2.774" ..... **AD1**

50Ω RCA plug Center pin .070" 50Ω TNC A =2.774" ..... **ADH1**

75Ω WE Center pin .090" 75Ω BNC A =2.83" ..... **AD1W**

75Ω WE Center pin .090" 75Ω TNC A =2.83" ..... **ADH1W**

(WECO 358 type)



### ADAPTER

### 75Ω MINATURE PATCH PLUG (MINI-WECO TYPE)

TO 75Ω BNC

**ADMW12**

△ - Refers to cable group table, see pages 91-133. R-Resistance