

NOTES:

1. $\text{\textcircled{C}}$ REPRESENTS A CRITICAL DIMENSION.
2. ALL ASSEMBLIES TO BE 100 % ELECTRONICALLY TESTED FOR SHORTS AND OPENS.
3. ALL ASSEMBLIES TO BE 100 % HI-POT TESTED AT 630V.
4. TO BE MEASURED FROM SCORE LINE.
5. PARTS TO BE LAYER PACKAGED.
6. SI DATA AVAILABLE FOR STANDARD LENGTHS ONLY.
7. MAX CABLE LENGTH AVAILABLE WITHOUT FLAT. RIBBONIZED SECTION IA 18.61 INCHES. CONTACT SAMTEC FOR NUMBER OF FLAT SECTIONS IF LONGER LENGTH IS REQUIRED.

-D: DOUBLE END
FIG. 1
 FMTP-10-D-3.85-01-X

FMTP-XX-X-XX.XX-01-X-X-XX

No OF POSITIONS
 -02- THRU -25

OPTION
 -R: REVERSED CONNECTOR
 (SEE FIG. 3)

END ASSEMBLY
 -D: DOUBLE END (SEE FIGS 1&3)
 -T: TRANSFER END (SEE FIGS 2&4)

STANDARD POLARIZATION NOTCH
 -N: NOTCH
 (ONLY AVAILABLE ON -T)

PLATING OPTIONS
 LEAVE BLANK FOR STANDARD
 (USE T-1S57-01-T AND C-67-L)
 -F: FLASH SELECTIVE GOLD
 (USE T-1S57-01-F AND C-67-F)
 -S: SELECTIVE GOLD
 (USE T-1S57-01-S AND C-67-S)

LEAD STYLE

ASSEMBLY LENGTH
 ONLY AVAILABLE IN THESE LENGTHS
 03.85" (USE CBTP-68-30-7/38-025-2)
 08.77" (USE CBTP-68-30-7/38-025-1)
 18.00" (USE CBTP-68-30-7/38-025-4)

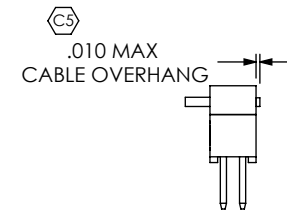
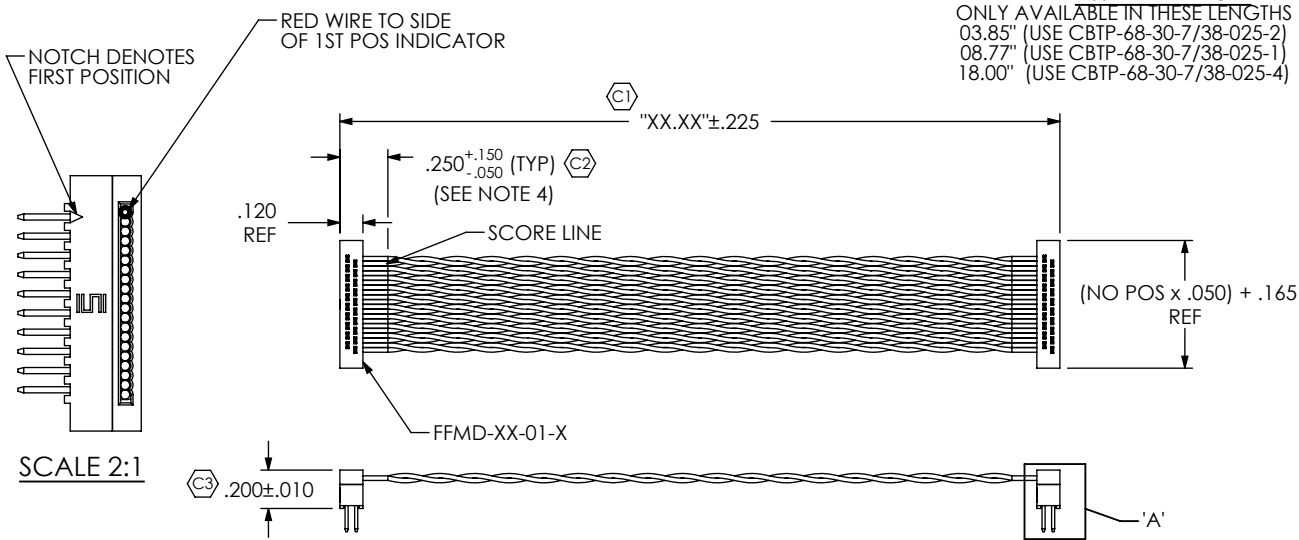


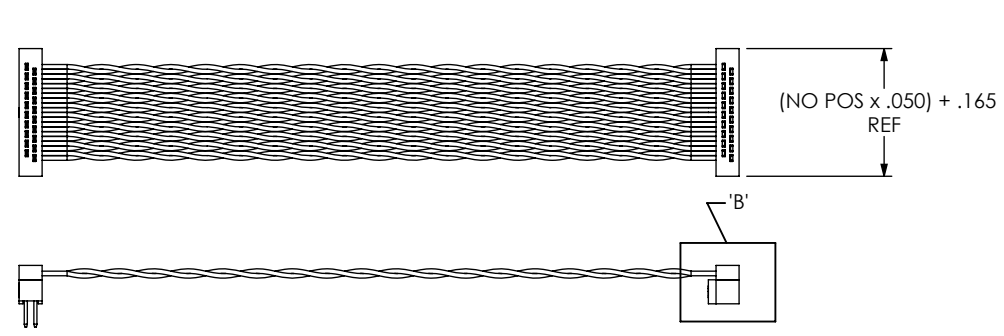
TABLE 1

PIN No.	COLOR
1	RED
2	WHITE
3	BLUE
4	WHITE
5	BLUE
6	WHITE
7	BLUE
8	WHITE
9	BLUE
10	WHITE
REPEAT	

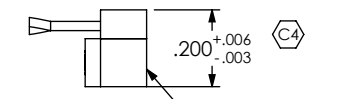
DETAIL 'A'
 SCALE 2:1

DO NOT
 SCALE FROM
 THIS PRINT

SCALE 2:1

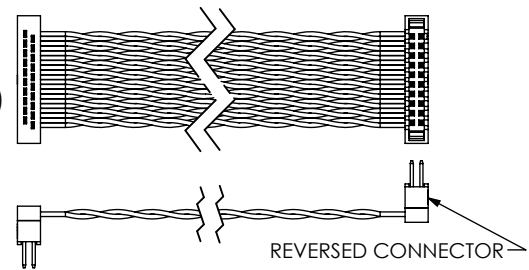


-T: TRANSFER END
FIG. 2
 FMTP-10-T-3.85-01-X-N
 (SAME AS FIG. 1 EXCEPT AS SHOWN)



DETAIL 'B'
 SCALE 2:1

-R
FIG. 3
 REVERSED CONNECTOR
 FMTP-10-D-X.XX-01-X-R
 (SAME AS FIG. 1 EXCEPT AS SHOWN)



UNLESS OTHERWISE SPECIFIED,
 DIMENSIONS ARE IN INCHES.
 TOLERANCES ARE:
 DECIMALS ANGLES
 .XX: ±.01 [.3] 2°
 .XXX: ±.005 [.13]
 .XXXX: ±.0020 [.051]

PROPRIETARY NOTE
 THIS DOCUMENT CONTAINS INFORMATION
 CONFIDENTIAL AND PROPRIETARY TO
 SAMTEC, INC. AND SHALL NOT BE REPRODUCED
 OR TRANSFERRED TO OTHER DOCUMENTS OR
 DISCLOSED TO OTHERS OR USED FOR ANY
 PURPOSE OTHER THAN THAT WHICH IT WAS
 OBTAINED WITHOUT THE EXPRESSED WRITTEN
 CONSENT OF SAMTEC, INC.



520 PARK EAST BLVD, NEW ALBANY, IN 47150
 PHONE: 812-944-6733 FAX: 812-948-5047
 e-Mail: info@SAMTEC.com code: 53322

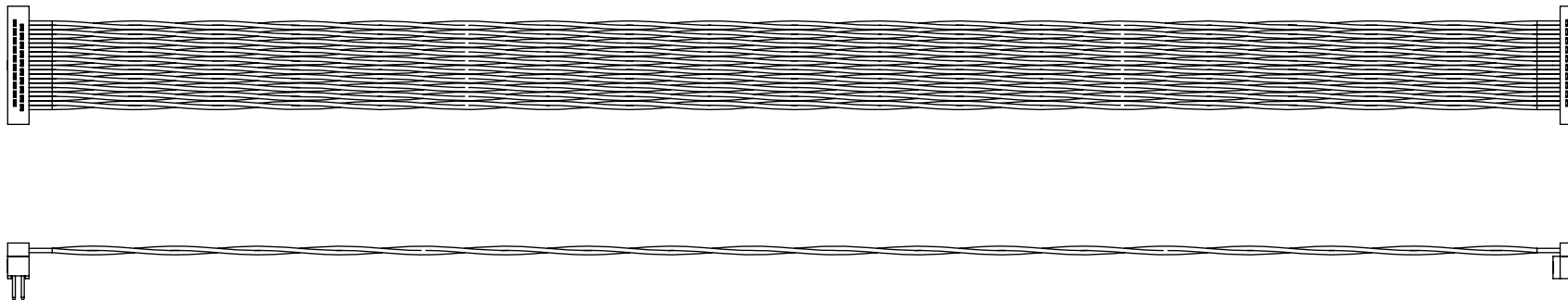
MATERIAL: DO NOT SCALE DRAWING SHEET SCALE: 1:1
 INSULATOR: CELANEX 3314, COLOR: BLACK
 CONTACT OR TERMINAL: PHOS BRONZE
 CABLE: TWISTED PAIR

DESCRIPTION:
 .050 X .050 C/L TWISTED PAIR MALE IDC ASSEMBLY

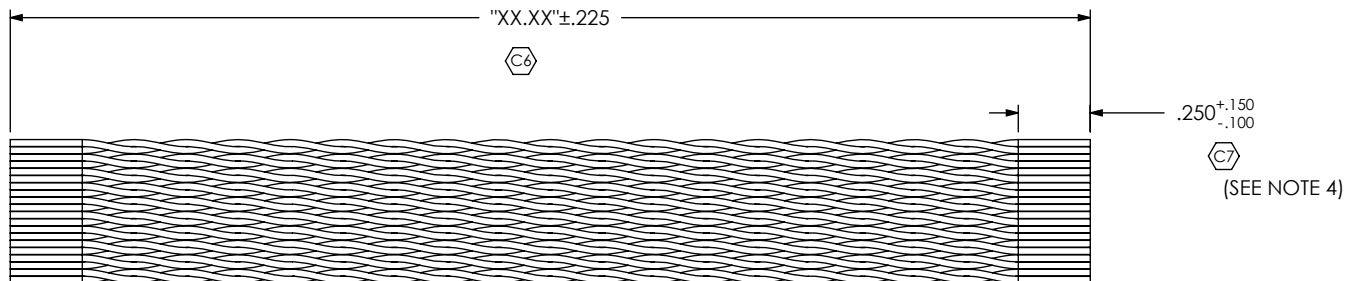
DWG. NO.
FMTP-XX-X-XX.XX-01-X-X-XX


BY: LENNY K 3/16/07 SHEET 1 OF 2

-T: TRANSFER END
 FIG. 4
 FMTP-10-T-8.77-01-X-N
 (SAME AS FIG. 4 EXCEPT AS SHOWN)



IN PROCESS



<p>PROPRIETARY NOTE THIS DOCUMENT CONTAINS INFORMATION CONFIDENTIAL AND PROPRIETARY TO SAMTEC, INC. AND SHALL NOT BE REPRODUCED OR TRANSFERRED TO OTHER DOCUMENTS OR DISCLOSED TO OTHERS OR USED FOR ANY PURPOSE OTHER THAN THAT WHICH IT WAS OBTAINED WITHOUT THE EXPRESSED WRITTEN CONSENT OF SAMTEC, INC.</p> <p>DO NOT SCALE DRAWING</p> <p>SHEET SCALE: 1:1</p>		
	<p>520 PARK EAST BLVD, NEW ALBANY, IN 47150 PHONE: 812-944-6733 FAX: 812-948-5047 e-Mail: info@SAMTEC.com code: 55322</p>	
	<p>DESCRIPTION: .050 X .050 C/L TWISTED PAIR MALE IDC ASSEMBLY</p>	
	<p>DWG. NO. FMTP-XX-X-XX.XX-01-X-X-XX</p>	
<p>BY: LENNY K 3/16/07</p>		<p>SHEET 2 OF 2</p>