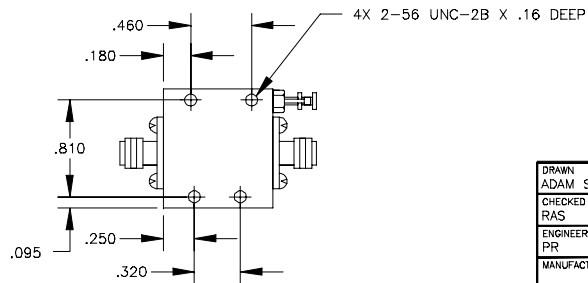
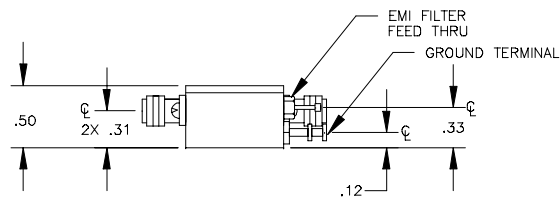
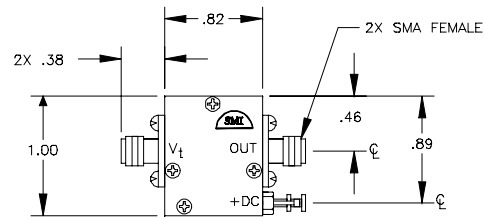



OTL 23VCOSMA

REVISIONS

REV	DESCRIPTION	DATE	APPROVED
--	ECN 15129, RELEASE	3/8/07	DM 3/8/07



**CAUTION**  
 THIS ASSEMBLY CONTAINS PARTS SENSITIVE TO DAMAGE BY ELECTRO-STATIC DISCHARGE (ESD). USE ESD PRECAUTIONARY PROCEDURES WHEN TOUCHING, REMOVING OR INSERTING.

DRAWN ADAM SIDLE	DATE 3/8/07	 PHILADELPHIA OPERATIONS 2707 BLACK LAKE PLACE, PHILADELPHIA PA. 19154 (USA)		
CHECKED RAS	DATE 3/8/07			
ENGINEERING PR	DATE 3/8/07	OUTLINE DRAWING VCO IN CONNECTORIZED SMA		
MANUFACTURING	DATE			
QUALITY DM	DATE 3/8/07	SIZE A	FSCM NO. 60979	DWG NO. OTL 23VCOSMA
		K:\ENG\ACL\TWIN\OUTLINE NEW\VCO SMA SHT 1 OF 1		