

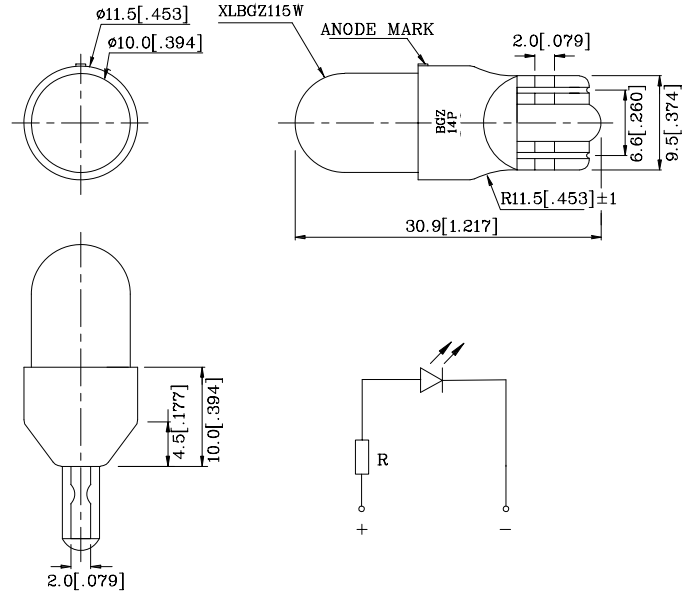
PRELIMINARY SPEC

Features

- BUILT-IN CURRENT LIMITING RESISTOR FOR DIRECT APPLICATION OF DIFFERENT ACROSS CURRENT.
- LONG LIFE.
- LOW CURRENT, POWER SAVINGS.
- LOW MAINTENANCE.
- SOLID STATE, HIGH VIBRATION RESISTANT.
- 14V INTERNAL RESISTOR.
- RoHS COMPLIANT.



ATTENTION
 OBSERVE PRECAUTIONS
 FOR HANDLING
 ELECTROSTATIC
 DISCHARGE
 SENSITIVE
 DEVICES



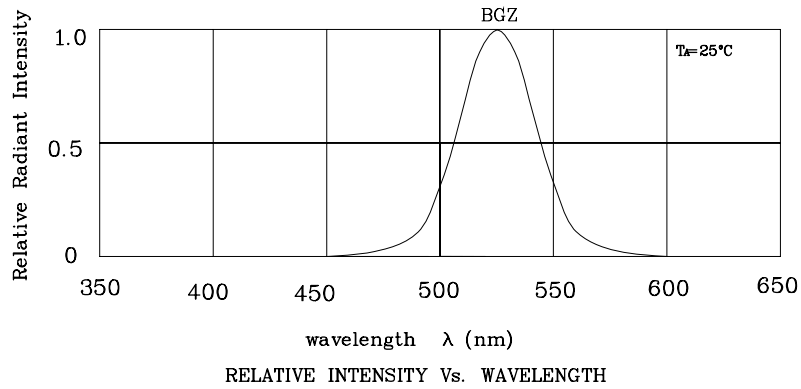
Notes:

1. All dimensions are in millimeters (inches).
2. Tolerance is $\pm 0.25(0.01)$ unless otherwise noted.

Absolute Maximum Ratings ($T_A=25^\circ\text{C}$)		BGZ (InGaN)	Unit
Reverse Voltage	V_R	5	V
Forward Voltage	V_F	16	V
Power Dissipation	P_T	250	mW
Operating Temperature	T_A	-40 ~ +70	°C
Storage Temperature	T_{stg}	-40 ~ +85	
Electrostatic Discharge Threshold (HBM)		1000	V

Operating Characteristics ($T_A=25^\circ\text{C}$)		BGZ (InGaN)	Unit
Forward Current (Typ.) ($V_F=14\text{V}$)	I_F	16	mA
Forward Current (Max.) ($V_F=14\text{V}$)	I_F	22	mA
Reverse Current (Max.) ($V_R=5\text{V}$)	I_R	10	μA
Wavelength of Peak Emission (Typ.) ($V_F=14\text{V}$)	λ_P	525	nm
Wavelength of Dominant Emission (Typ.) ($V_F=14\text{V}$)	λ_D	535	nm
Spectral Line Full Width At Half-Maximum (Typ.) ($V_F=14\text{V}$)	$\Delta\lambda$	39	nm

Part Number	Emitting Color	Emitting Material	Lens-color	Luminous Intensity ($V=14\text{V}$) mcd		Wavelength nm λ_P	Viewing Angle 2θ 1/2
				min.	typ.		
XYWBGZ101W14V	Green	InGaN	Water Clear	3800	7990	525	20°



❖ **BGZ**

