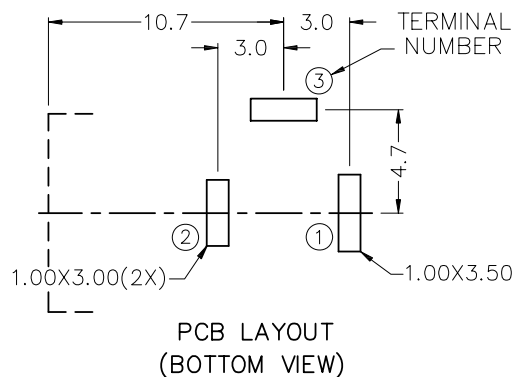
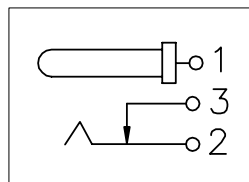


SCHEMATIC DRAWING



SPECIFICATIONS:

MATERIAL:-

HOUSING: PBT, UL94V-0

COVER: PBT, UL94V-0

CENTER PIN: COPPER, NICKEL PLATED

TERMINAL 1: BRASS, TIN PLATED

TERMINAL 2: COPPER ALLOY, TIN PLATED

TERMINAL 3: BRASS, TIN PLATED

ELECTRICAL:-

CURRENT RATING: 2.5 AMP MAX

VOLTAGE PROOF: 500V AC RMS FOR 60 SECS

CONTACT RESISTANCE: 100 mΩ MAX.

INSULATION RESISTANCE: 100 MΩ MIN. AT 500V DC

MECHANICAL:-

DURABILITY: 5000 CYCLES

INSERTION FORCE: 0.30~3.00 KGS

WITHDRAWAL FORCE: 0.30~3.00 KGS

ENVIRONMENTAL:-

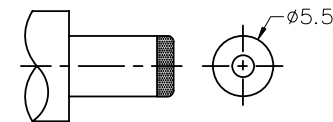
OPERATING TEMPERATURE: -25°C ~ +85°C

NOTES: ALL DIMENSIONS AND NOTES

MARKED * ARE CRITICAL AND

MUST BE CHECKED IN ACCORDANCE

WITH QUALITY DOC. Q1-02A

DC MATE PLUG

Allan	3	05.01.10	A256
Allan	2	23.12.09	A255
Allan	1	01.08.06	-

NAME	ISS.	DATE	C/NOTE
------	------	------	--------

APPROVED: *Paul*CHECKED: *Paul*ORDER CODE
M705-5 X 00461: $\varnothing 2.50$ mm
2: $\varnothing 2.00$ mm

DRAWN: Allan

CUSTOMER REF.:

ASSEMBLY DRG:

HARWINHARWIN USA
TEL: 603 893 5376
FAX: 603 893 5396
mis@harwin.comHARWIN Europe (UK)
TEL: 023 9231 4545
FAX: 023 9231 4590
mis@harwin.co.ukHARWIN Asia
TEL: +65 6 779 4909
FAX: +65 6 779 3868
mis@harwin.com.sgTHIS DRAWING AND ANY
INFORMATION OR DESCRIPTIVE
MATTER SET OUT HEREON ARE
CONFIDENTIAL AND COPYRIGHT
PROPERTY OF THE HARWIN
GROUP AND MUST NOT BE
DISCLOSED, LOANED, COPIED
OR USED FOR MANUFACTURING,
TENDERING OR FOR ANY
OTHER PURPOSE WITHOUT
THEIR WRITTEN PERMISSION.TOLERANCES
X. = ± 0.50 mm
X.X = ± 0.20 mm
X.XX = ± 0.10 mm
X.XXX = ± 0.05 mm
ANGLES = $\pm 5^\circ$
UNLESS STATEDMATERIAL:
SEE NOTES
FINISH: SEE NOTES
S/AREA: mm²TITLE:
DC POWER JACK,
PCB MOUNT, FEMALEDRAWING NUMBER:
M705-5 X 0046SHT
1
OF
1