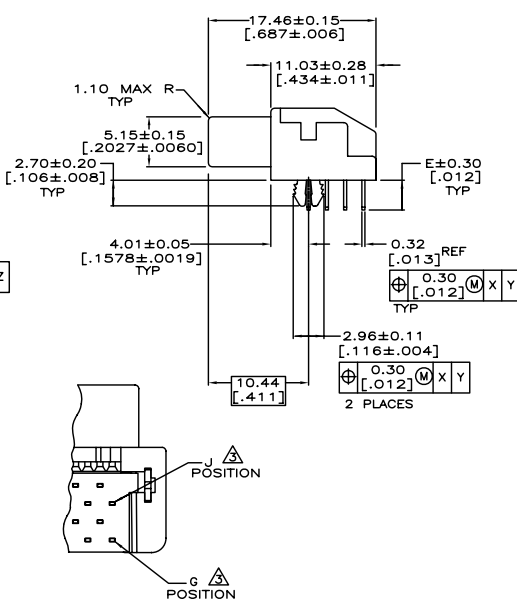
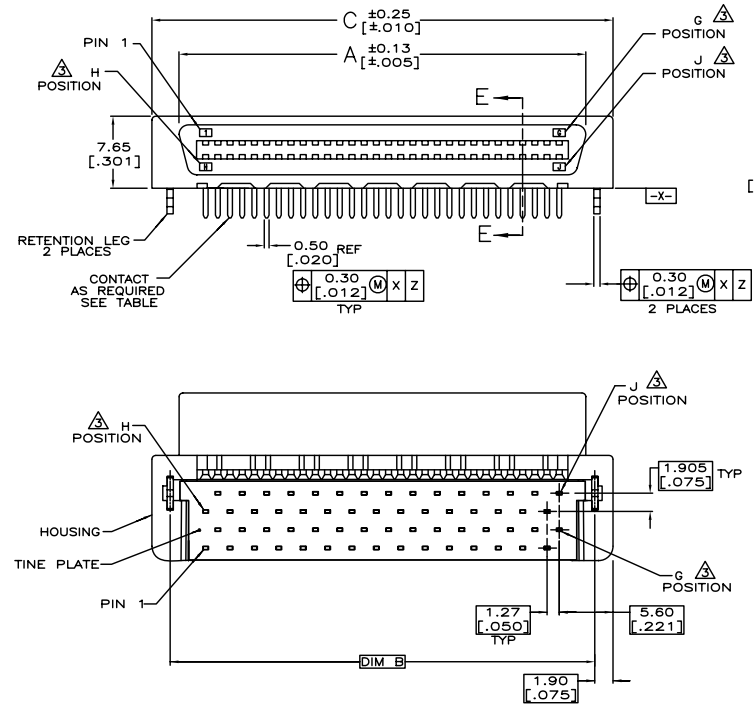
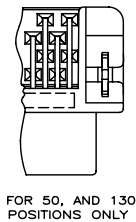
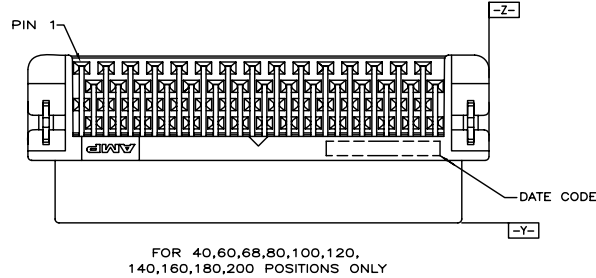


LOC		DIST		REVISIONS			
P	LTR	DESCRIPTION		DATE	DWN	APVD	
	F	REVISED. (ECR-09-006869)		31MAR09	FY	WK	



LOC	DIST	P	LTR	DESCRIPTION	DATE	DWN	APVD
				GOLD FLASH 5-1734037-6			
				0.381um [15u"] 3-1734037-6			
				0.762um [30u"] 1-1734037-6			
				GOLD FLASH 5-1734037-4			
				0.381um [15u"] 3-1734037-4			
				0.762um [30u"] 1-1734037-4			
				GOLD FLASH 2-1734037-0			
				0.381um [15u"] 1-1734037-8			
				0.762um [30u"] 1-1734037-2			
				GOLD FLASH 5-1734037-1			
				0.381um [15u"] 3-1734037-1			
				0.762um [30u"] 1-1734037-1			
				GOLD FLASH 5-1734037-0			
				0.381um [15u"] 3-1734037-0			
				0.762um [30u"] 1-1734037-0			
				GOLD FLASH 4-1734037-7			
				0.381um [15u"] 2-1734037-7			
				0.762um [30u"] 1734037-7			
				GOLD FLASH 4-1734037-6			
				0.381um [15u"] 2-1734037-6			
				0.762um [30u"] 1734037-6			
				GOLD FLASH 4-1734037-5			
				0.381um [15u"] 2-1734037-5			
				0.762um [30u"] 1734037-5			
				GOLD FLASH 4-1734037-4			
				0.381um [15u"] 2-1734037-4			
				0.762um [30u"] 1734037-4			
				GOLD FLASH 4-1734037-2			
				0.381um [15u"] 2-1734037-2			
				0.762um [30u"] 1734037-2			
				GOLD FLASH 4-1734037-1			
				0.381um [15u"] 2-1734037-1			
				0.762um [30u"] 1734037-1			

NOTE:
 1. MATERIAL:
 HOUSING: LIQUID CRYSTAL POLYMER (LCP), UL 94V-0, BLACK COLOR.
 CONTACTS: PHOSPHOR BRONZE.
 BOARDLOCKS: BRASS.
 2. FINISH:
 CONTACTS: (SEE TABLE) GOLD PLATED ON CONTACT AREA,
 3.81um [150u"] MIN. MATTE-TIN ON SOLDERTAIL, OVER
 1.27mm [50m"] MIN. NICKEL UNDERPLATED.
 BOARDLOCKS: 3.81um [150u"] MIN. TIN-Cu OVER
 1.27mm [50m"] MIN. UNDERPLATED.
 G, J, AND H INDICATES NUMBER OF POSITION MARKED ON ASSEMBLY.
 ALSO SEE TABLE.
 CONNECTOR SOLDER TAILS WILL ACCOMMODATE PRINTED CIRCUIT BOARD
 THICKNESS OF 0.80 TO 1.60 [.031 TO .063].
 BOARDLOCKS NOT PRESENT.
 6. WAVE SOLDER CAPABLE TO 265°C PER TEST SPEC.
 109-202, CONDITION B.

THIS DRAWING IS A CONTROLLED DOCUMENT.

DWN F. YANG 31MAR2009
 CHK S. CHIEN 31MAR2009
 APVD W. KODAMA 31MAR2009

Tyco Electronics Tyco Electronics Corporation
 Taipei, Taiwan

RECEPTACLE ASSEMBLY, R/A,
 BTB, CHAMP.050, SERIES I

108-1367

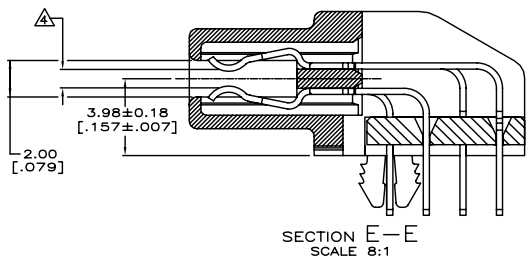
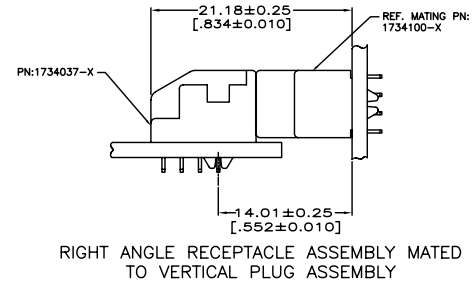
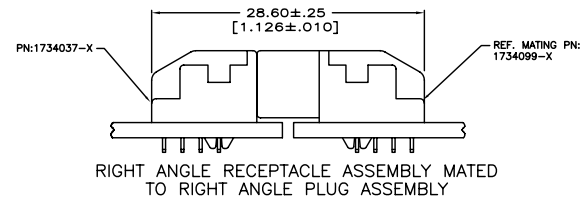
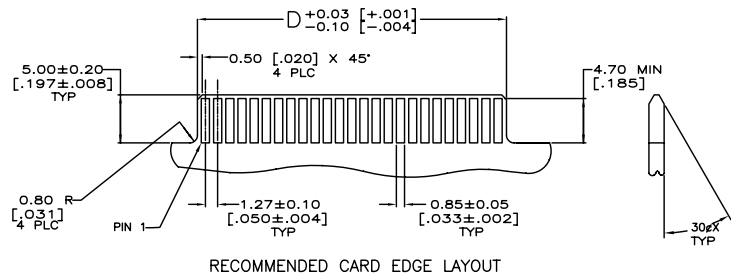
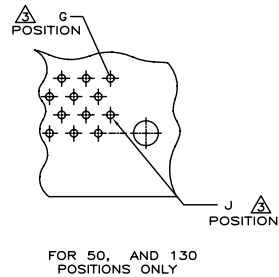
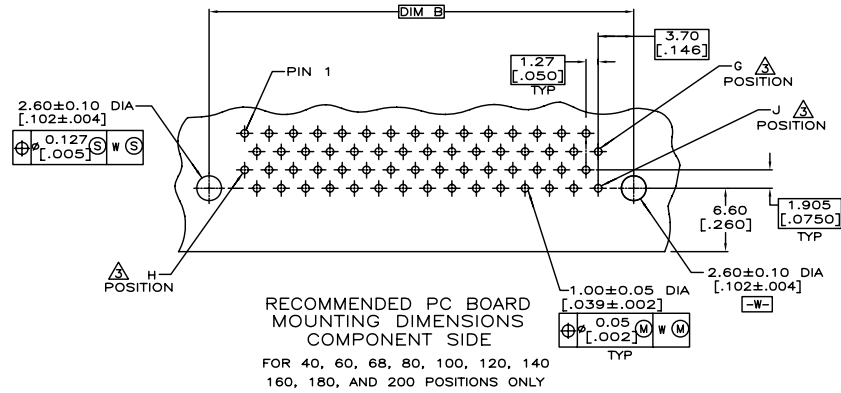
QUALIFICATION TEST REPORT

SIZE A3 CAGE CODE 00779 C=1734037 DRAWING NO. RESTRICTED TO

WEIGHT - SCALE - SHEET 1 OF 4 REV F

CUSTOMER DRAWING

LOC	DIST	REVISIONS			
P	LTR	DESCRIPTION	DATE	DWN	APVD
DW		SEE SHEET 1.			



THIS DRAWING IS A CONTROLLED DOCUMENT.		DWN		Tyco Electronics Corporation Taipei, Taiwan	
DIMENSIONS: MM		CHK		NAME	
TOLERANCES UNLESS OTHERWISE SPECIFIED:		APVD		RECEPTACLE ASSEMBLY, R/A, BTB, CHAMP.050, SERIES I	
0 PLC ± -		PRODUCT SPEC		SIZE CAGE CODE DRAWING NO	
1 PLC ± -		APPLICATION SPEC		A3 00779 G=1734037	
2 PLC ± -		WEIGHT		RESTRICTED TO	
3 PLC ± -		CUSTOMER DRAWING		SCALE SHEET 2 OF 4 REV F	
4 PLC ± -					
ANGLES ± -					
FINISH					

4

3

2

1

THIS DRAWING IS UNPUBLISHED.

RELEASED FOR PUBLICATION

AUG 2006

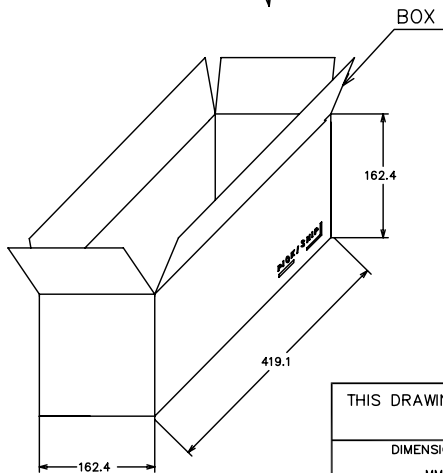
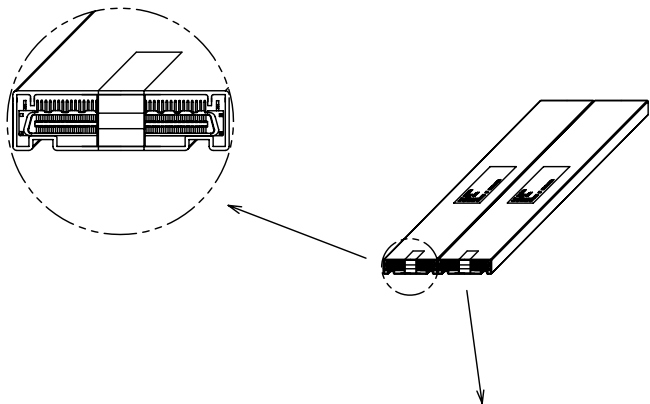
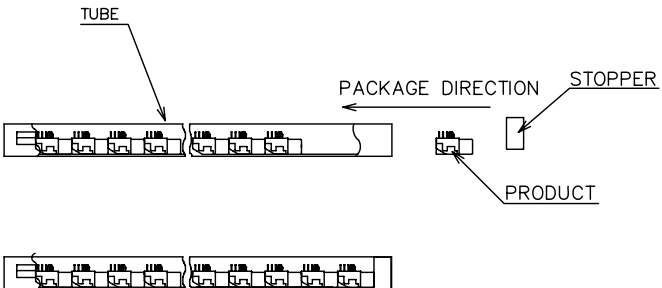
© COPYRIGHT BY TYCO ELECTRONICS CORPORATION. ALL RIGHTS RESERVED.

LOC DW

DIST

REVISIONS

P	LTR	DESCRIPTION	DATE	DWN	APVD
		SEE SHEET 1.			



POS.	Q'TY/TUBE	TUBE/BOX	Q'TY/BOX	N/W (KG)	G/W (KG)	PART NUMBER
80	21	16	336	2.23	3.07	4-1734037-2 2-1734037-2 1734037-2
100	21	16	336	2.55	3.40	5-1734037-0 3-1734037-0 1-1734037-0
80	21	16	336	2.08	2.93	4-1734037-1 2-1734037-1 1734037-1

THIS DRAWING IS A CONTROLLED DOCUMENT.

DIMENSIONS: MM	TOLERANCES UNLESS OTHERWISE SPECIFIED:	DWN	Tyco Electronics Corporation Taipei, Taiwan			
	0 PLC ± -	CHK	NAME			
	1 PLC ± -	APVD	RECEPTACLE ASSEMBLY, R/A, BTB, CHAMP.050, SERIES I			
	2 PLC ± -	PRODUCT SPEC	SIZE	CAGE CODE	DRAWING NO	RESTRICTED TO
	3 PLC ± -	APPLICATION SPEC	A3	00779	G=1734037	
	4 PLC ± -	WEIGHT	CUSTOMER DRAWING			
MATERIAL	FINISH	SCALE		SHEET	REV	
				3 of 4	F	

4

3

2

1

THIS DRAWING IS UNPUBLISHED.

RELEASED FOR PUBLICATION

AUG 2006

© COPYRIGHT

BY TYCO ELECTRONICS CORPORATION.

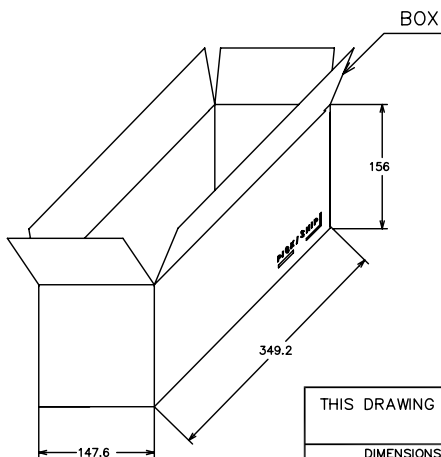
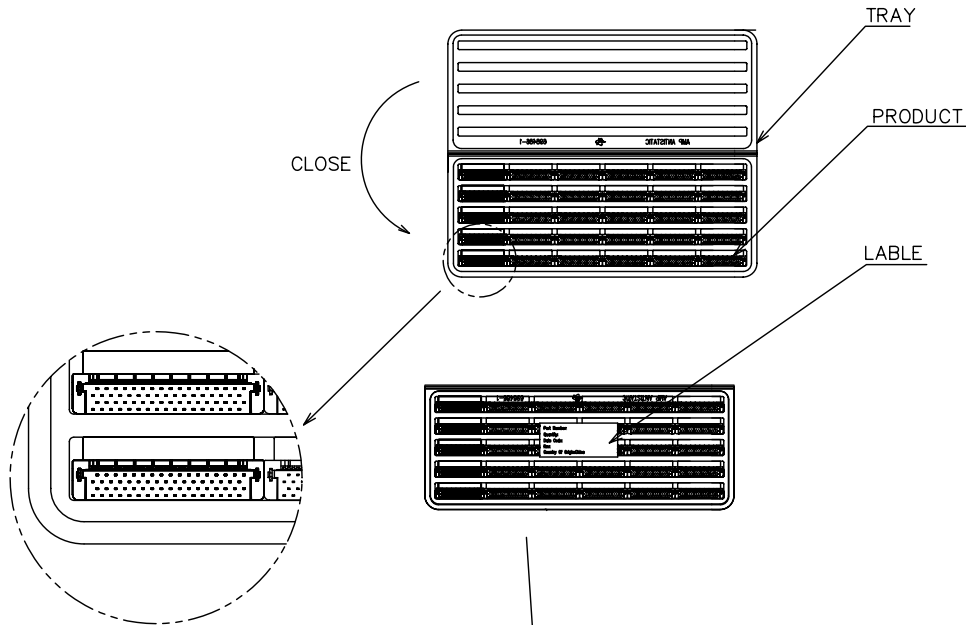
ALL RIGHTS RESERVED.

LOC
DW

DIST

REVISIONS

P	LTR	DESCRIPTION	DATE	DWN	APVD
		SEE SHEET 1.			



POS.	Q'TY/ TRAY	TRAY/ BOX	Q'TY/ BOX	N/W (KG)	G/W (KG)	PART NUMBER
160	10	10	100	1.33	2.28	5-1734037-6 3-1734037-6 1-1734037-6
140	15	10	150	1.67	2.62	5-1734037-4 3-1734037-4 1-1734037-4
120	15	10	150	1.35	2.30	2-1734037-0 1-1734037-8 1-1734037-2
100	20	10	200	1.43	2.43	5-1734037-1 3-1734037-1 1-1734037-1
68	30	10	300	1.65	2.60	4-1734037-7 2-1734037-7 1734037-7
60	30	10	300	1.60	2.60	4-1734037-6 2-1734037-6 1734037-6
50	35	10	350	1.55	2.50	4-1734037-5 2-1734037-5 1734037-5
40	45	10	450	1.55	2.45	4-1734037-4 2-1734037-4 1734037-4

THIS DRAWING IS A CONTROLLED DOCUMENT.

DIMENSIONS: MM	TOLERANCES UNLESS OTHERWISE SPECIFIED:	DWN	Tyco Electronics Corporation Taipei, Taiwan		
	0 PLC ± -	CHK	NAME		
	1 PLC ± -	APVD	RECEPTACLE ASSEMBLY, R/A, BTB, CHAMP.050, SERIES I		
	2 PLC ± -	PRODUCT SPEC	SIZE	CAGE CODE	DRAWING NO
	3 PLC ± -	APPLICATION SPEC	A300779	G=1734037	RESTRICTED TO
	4 PLC ± -	WEIGHT	CUSTOMER DRAWING		
MATERIAL	FINISH	SCALE		SHEET	REV
				4 of 4	F