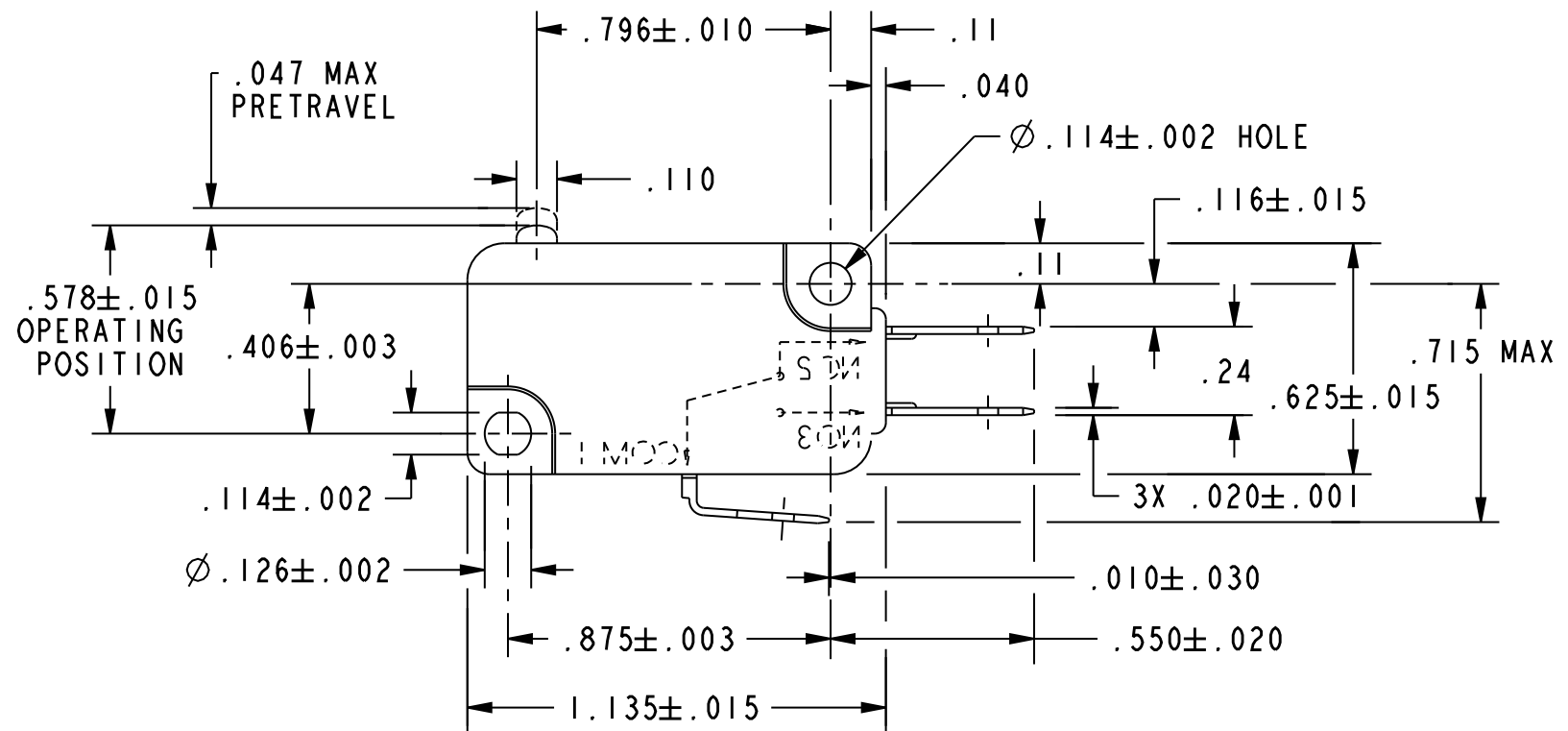
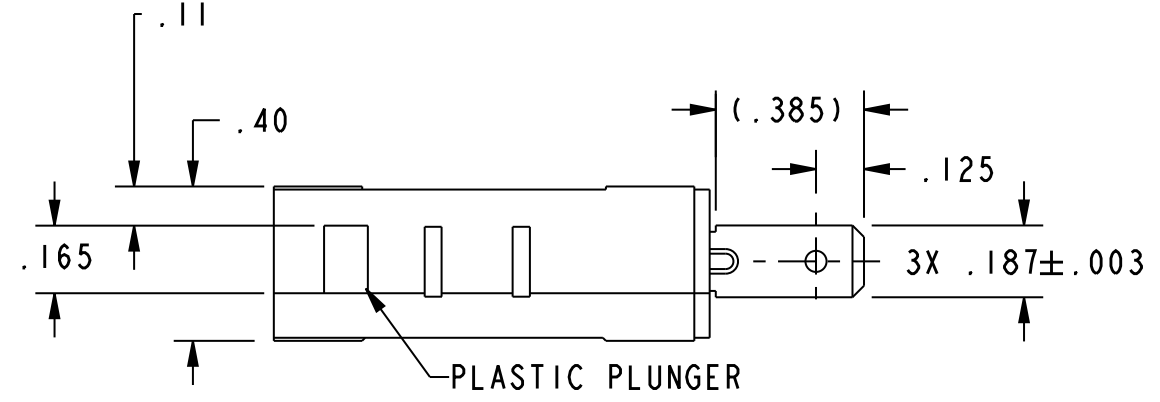


**CW-C6002**

REV	DOCUMENT	CHANGED BY	CHECK
2	202141	GJW 11JAN01	SAV
3	203808	JLH 28AUG01	SAV
4	0059510	SJK 09DEC09	CMH
5	0060050	LK 06JAN10	CMH



CHARACTERISTICS	
OPERATING FORCE-----	6-14 OZ
RELEASE FORCE-----	4 OZ MIN
DIFFERENTIAL TRAVEL-----	.006-.016
OVERTRAVEL-----	.040 MIN
FREE POSITION-----	.625 MAX
RELEASE TRAVEL-----	.007 MIN

ELECTRICAL DATA	
CONTACT ARRANGEMENT S P D T	
L156 11A 1/3HP 125, 250 OR 277 VAC 1/2A 125 VDC, 1/4A 250 VDC 4A 125 VAC "L"	

UNLESS OTHERWISE SPECIFIED TOLERANCES ARE:			
	<input checked="" type="checkbox"/> US (inch) CUSTOMARY	<input type="checkbox"/> SI (mm) METRIC	
NO PLACE	X	±.040	±1
ONE PLACE	.X	±.030	±0.4
TWO PLACE	.XX	±.015	±0.15
THREE PLACE	.XXX	±.005	±
ANGLES		±	±
RAW MATERIAL-COMMERCIAL STANDARD			
THIRD ANGLE PROJECTION			

DRAWN	GJW	11JAN01
CHECK	SAV	11JAN01
THIS DRAWING COVERS A PROPRIETARY ITEM AND IS THE PROPERTY OF HONEYWELL. THIS DRAWING IS NOT TO BE COPIED OR USED WITHOUT THE PERMISSION OF HONEYWELL.		
PTC 2D	ASME Y14.5M-1994	

<b>Honeywell</b>			
TITLE <b>SWITCH, BASIC</b>			
SIZE	DWG TYPE	DRAWING NAME	REV
<b>B</b>	<b>I</b>	<b>V7-6B19D8</b>	<b>5</b>
SCALE	NONE	WEIGHT	SHEET 1 OF 1

