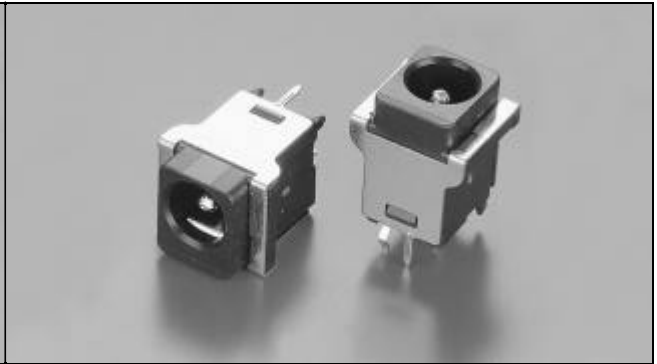
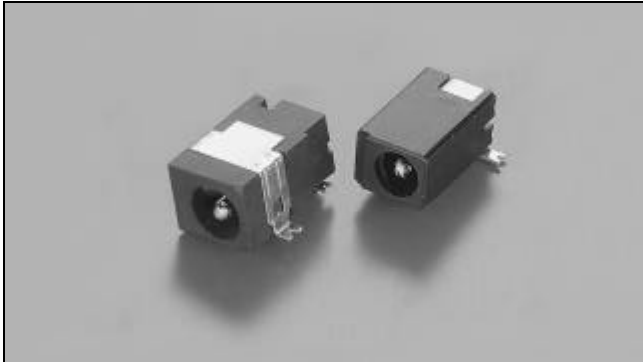


RIGHT ANGLE



STRAIGHT



LOW PROFILE S.M.T



LOW PROFILE SINK TYPE

MATERIALS/FINISHES

INSULATOR

THERMOPLASTIC (UL 94V-0)

CONTACT

COPPER ALLOY

CONTACT AREA:

GOLD FLASH OVER Pd/Ni (25u" MIN.)

SHELL

COPPER ALLOY

SPECIFICATION

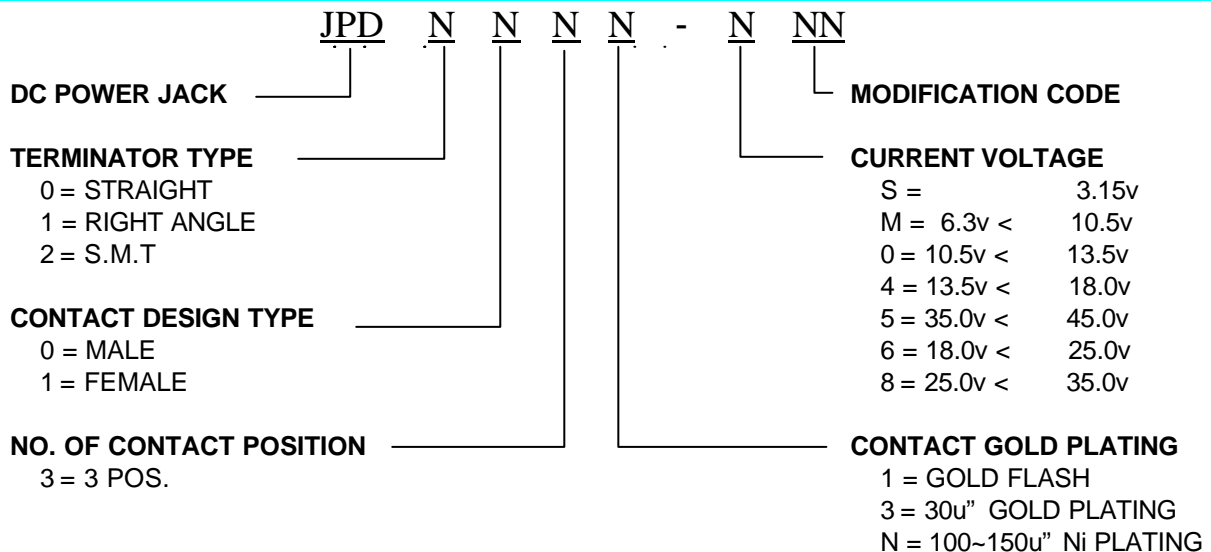
ELECTRICAL CHARACTERISTICS :

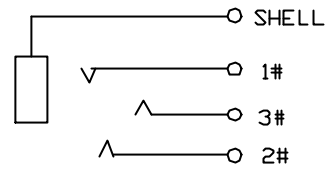
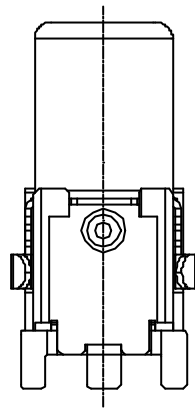
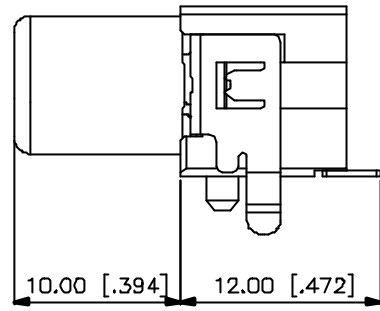
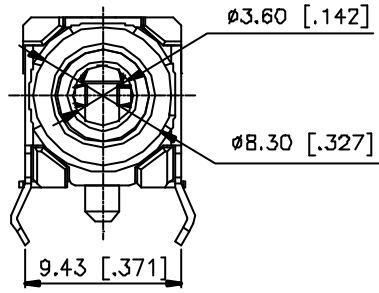
- * LOW LEVEL CONTACT RESISTANCE : 30 m MAX.
- * DIELECTRIC WITHSTANDING VOLTAGE : 500 VAC MIN.
- * INSULATION RESISTANCE : 100 M MIN.
- * CONTACT CURRENT RATING : 2~ 6 Ampere

MECHANICAL CHARACTERISTICS :

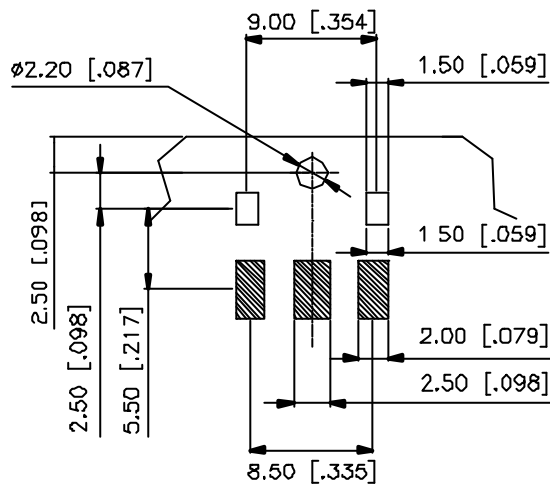
- * CONNECTOR INSERTION FORCE : 3.0kg MAX.
- * CONNECTOR EXTRACTION FORCE : 0.3kg MIN.
- * DURABILITY : 5000 CYCLES
- * OPERATING TEMPERATURE : -55 TO +85

ORDER INFORMATION



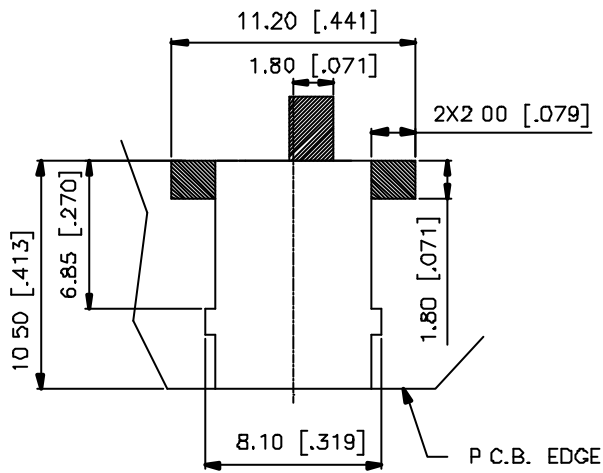
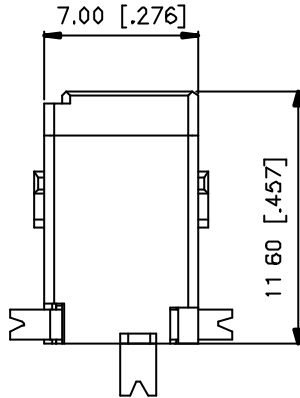
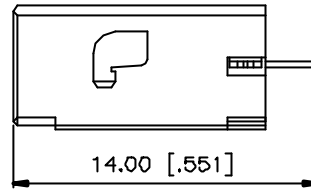
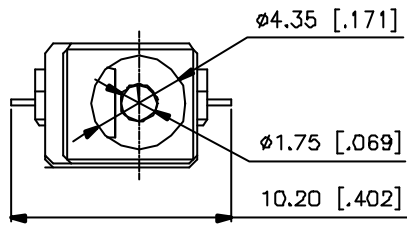


ELECTRICAL SCHEMATIC



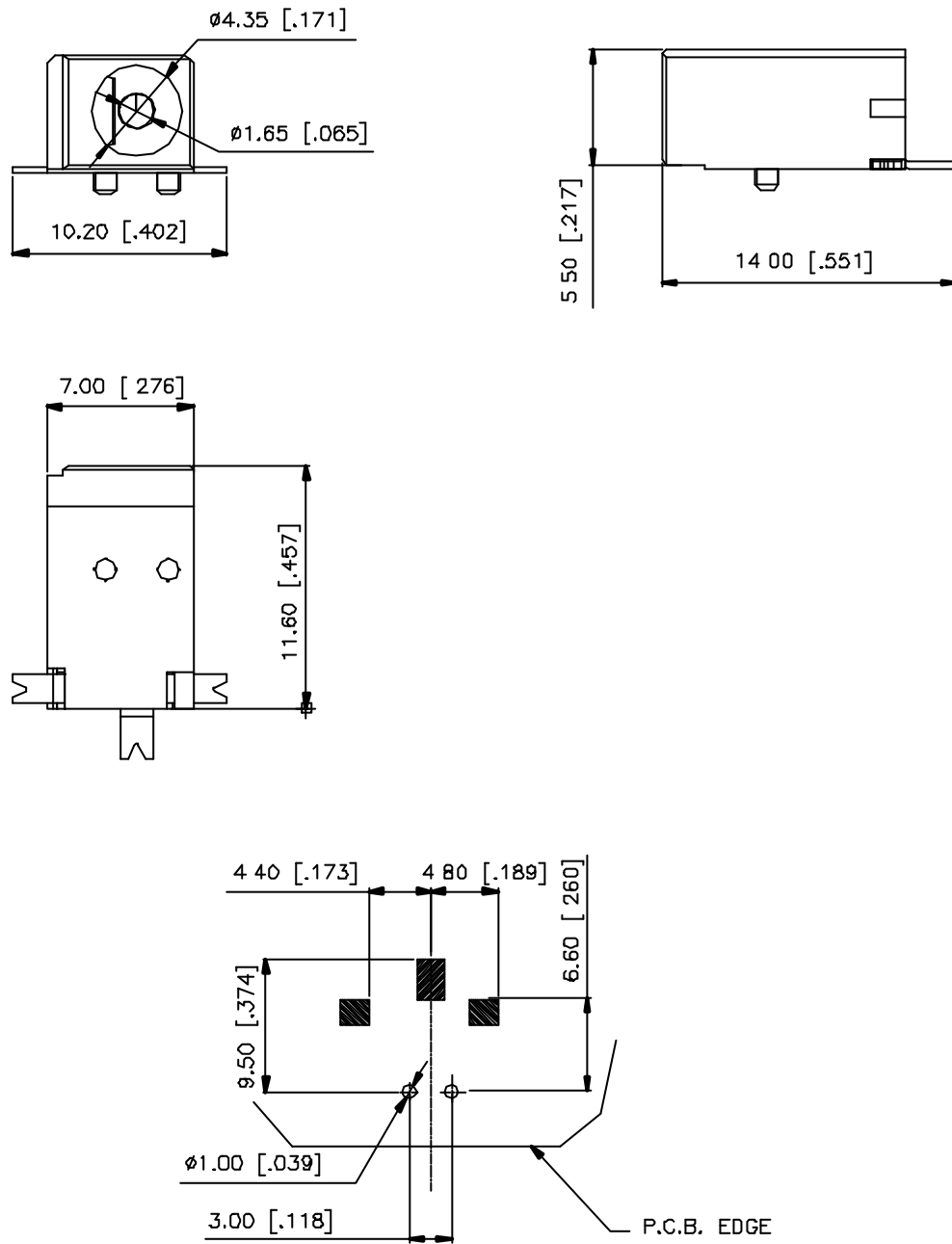
RECOMMENDED P.C.B LAYOUT
(TOP VIEW)

JPD2133-S26	3 POS.	BLACK
JPD2133-S25	3 POS.	WHITE
PROD. NO.	NO. OF POS.	COLOR



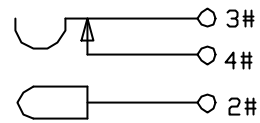
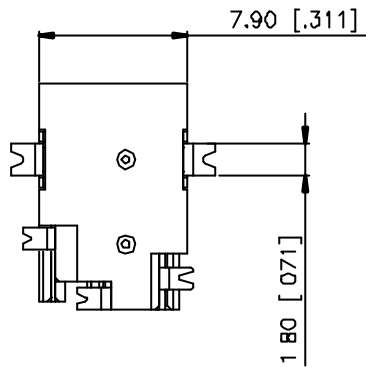
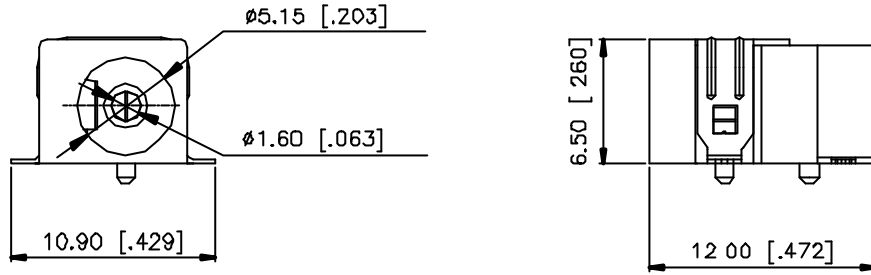
RECOMMENDED P.C.B LAYOUT
(TOP VIEW)

JPD2031-MS1-TR	3 POS.
PROD. NO.	NO. OF POS.

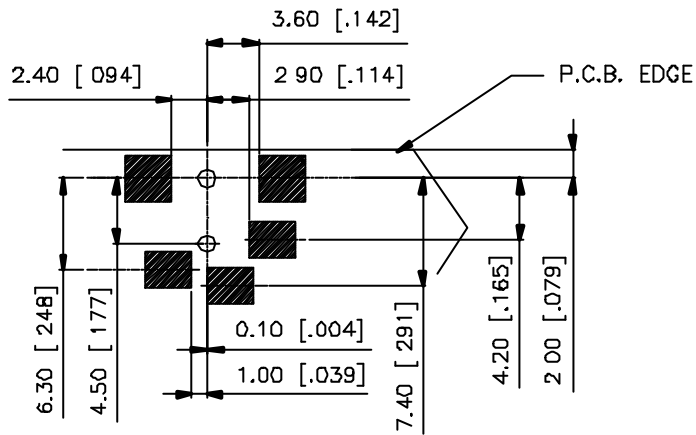


RECOMMENDED P.C.B LAYOUT
(TOP VIEW)

JPD2031-MB1-TR	3 POS.
PROD. NO.	NO. OF POS.

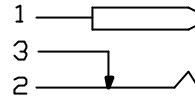
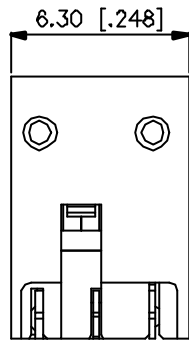
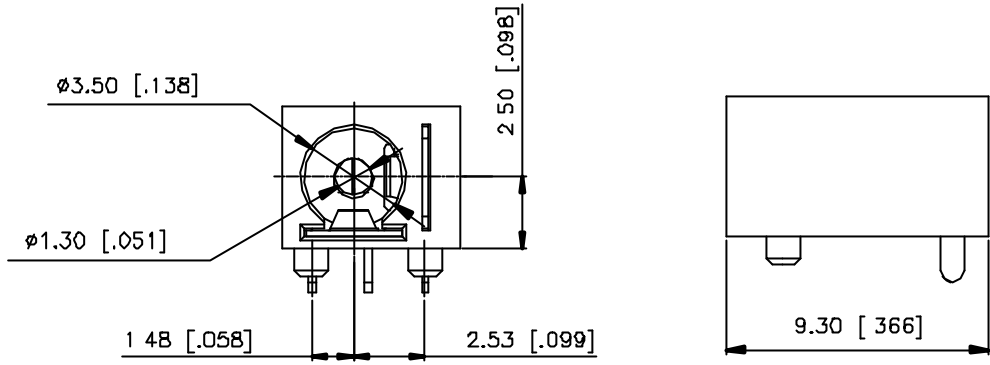


ELECTRICAL SCHEMATIC

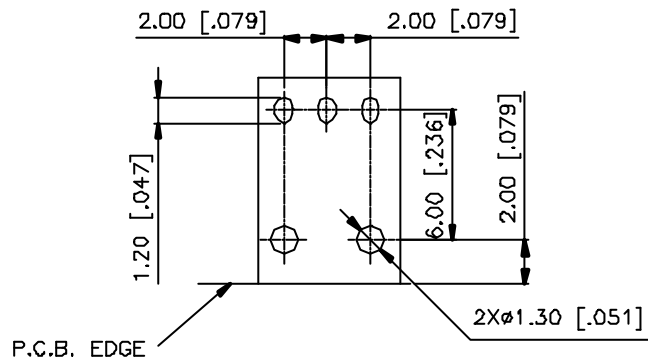


RECOMMENDED P.C.B LAYOUT
(TOP VIEW)

JPD2031-M05-TR	3 POS.
PROD. NO.	NO. OF POS.

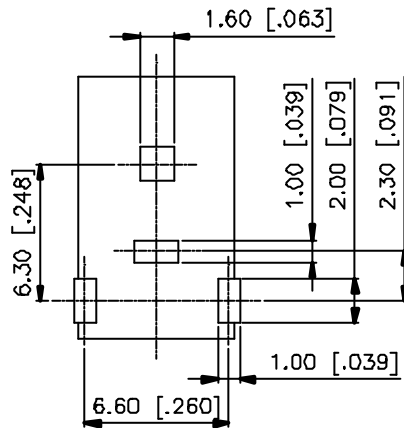
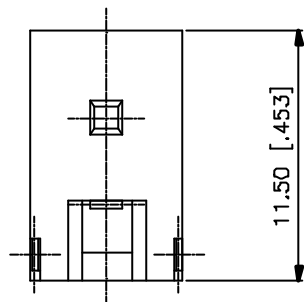
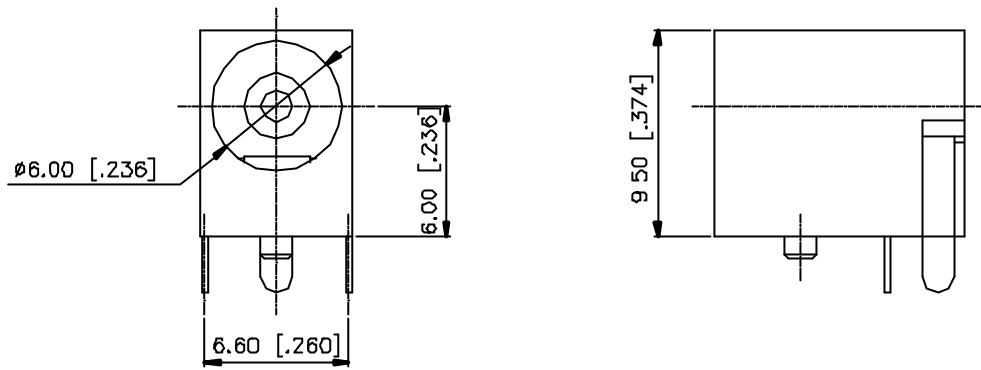


ELECTRICAL SCHEMATIC



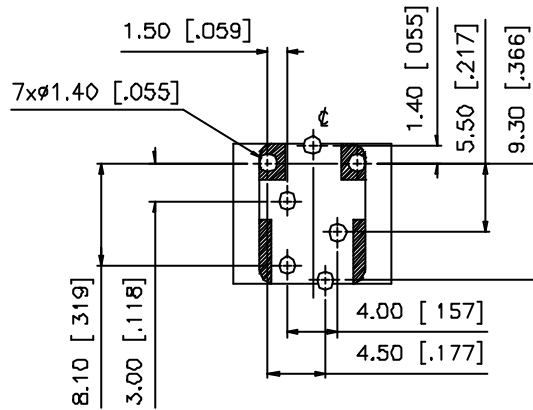
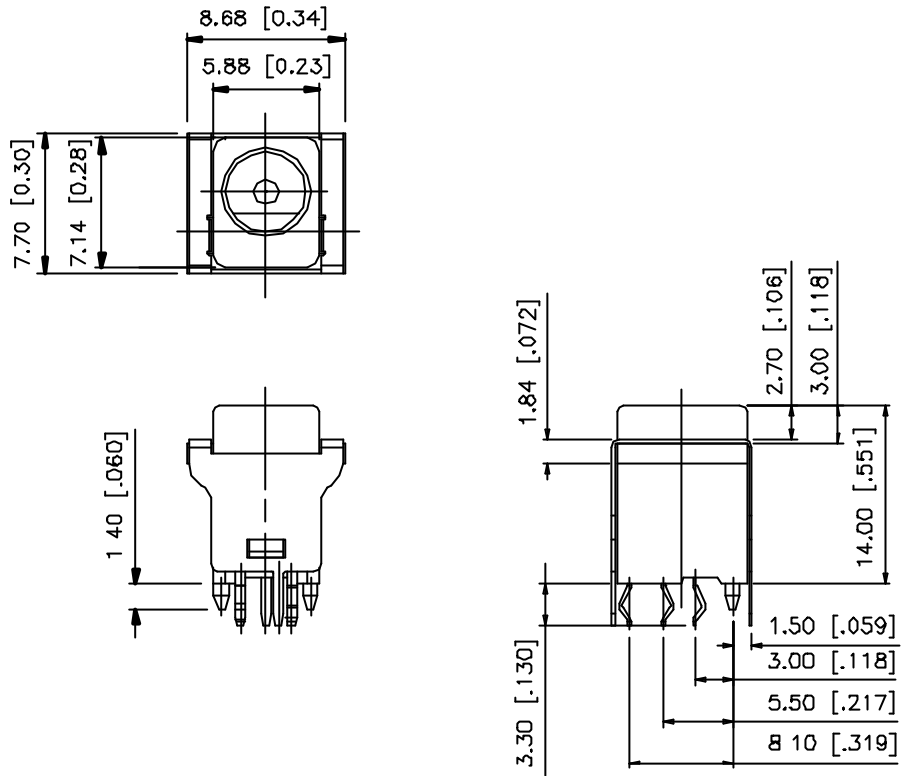
RECOMMENDED P.C.B LAYOUT
(TOP VIEW)

JPD103N-005	3 POS.
PROD. NO.	NO. OF POS.



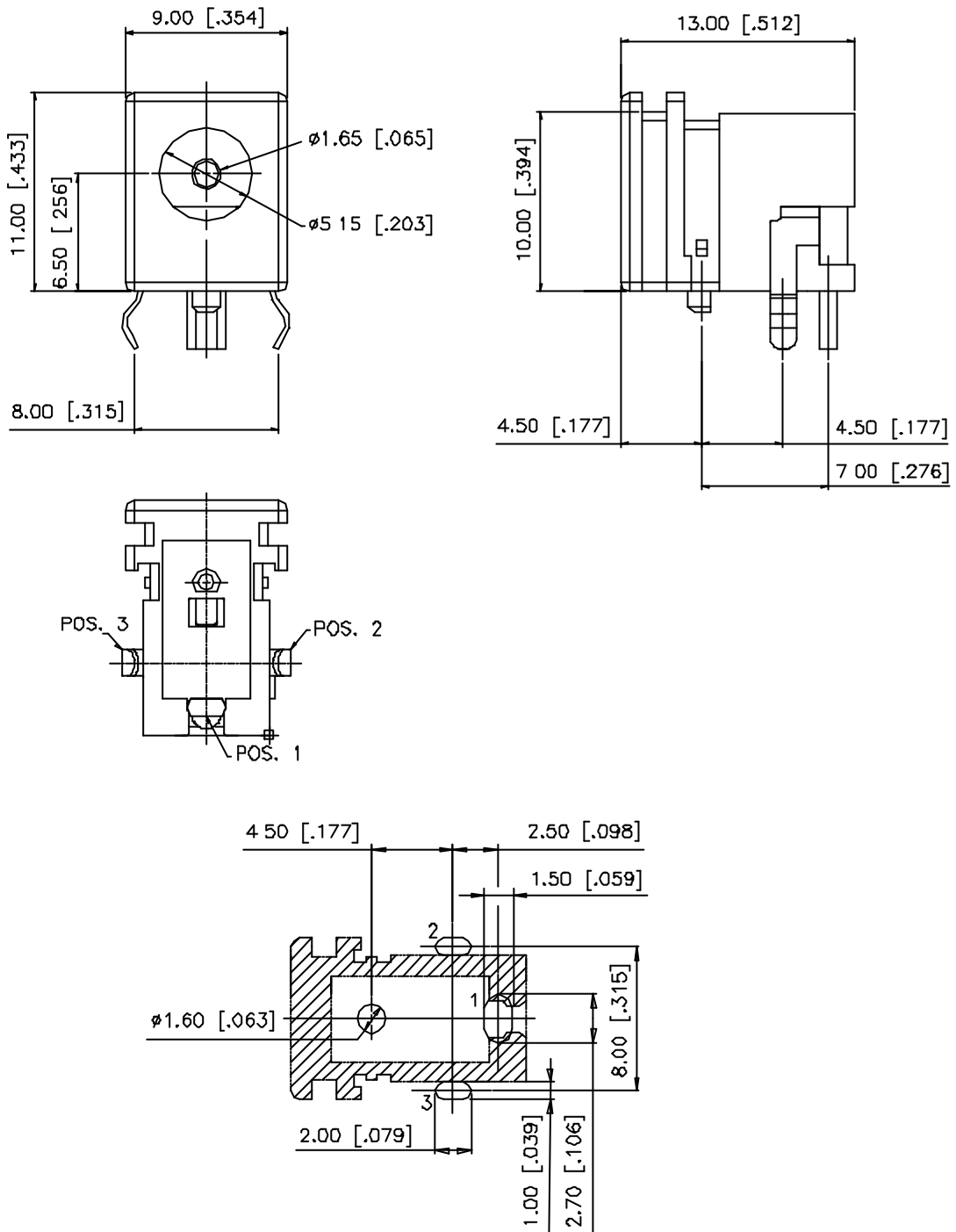
RECOMMENDED P.C.B LAYOUT
(TOP VIEW)

JPD103N-405	3 POS.
PROD. NO.	NO. OF POS.



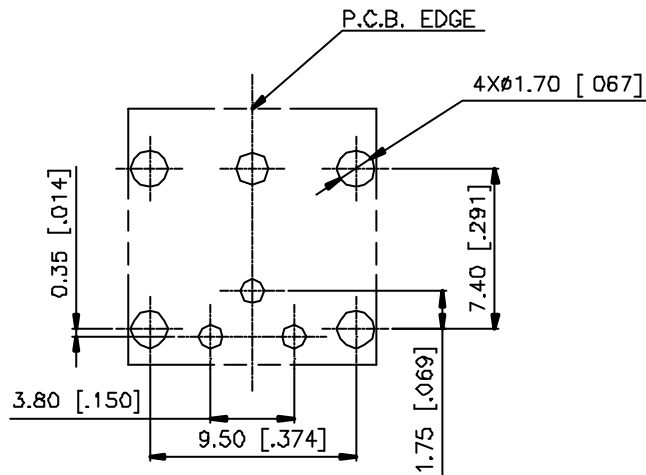
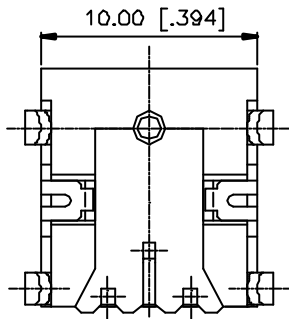
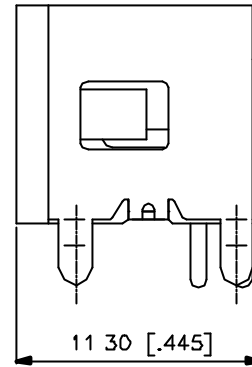
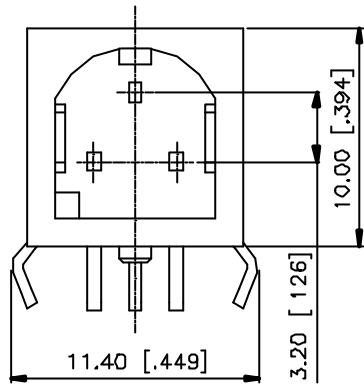
**RECOMMENDED P.C.B LAYOUT
(TOP VIEW)**

JPD003N-004	3 POS.
PROD. NO.	NO. OF POS.



RECOMMENDED P.C.B LAYOUT
(TOP VIEW)

JPD103N-802	3 POS.	25.0 < V ≤ 35.0
JPD103N-602	3 POS.	18.0 < V ≤ 25.0
PROD. NO.	NO. OF POS.	CURRENT VOLTAGE



RECOMMENDED P.C.B LAYOUT
(TOP VIEW)

JPD1031-502	3 POS.
PROD. NO.	NO. OF POS.