

A B C D E F G H

4 3 2 1

ELECTRICAL DATA

- I max 7.5A
- Contact resistance $\leq 7.3\text{m}\Omega$
- Insulation resistance $> 5000\text{M}\Omega$
- TEST VOLTAGE $> 1000\text{V}$
- contact/contact $> 1200\text{V}$
- contact/ground

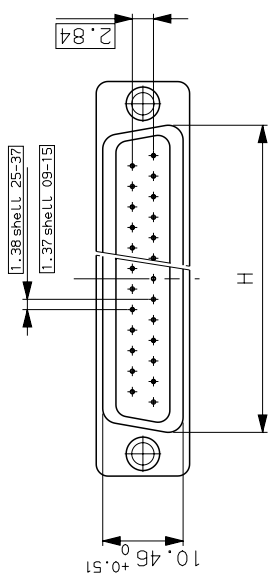
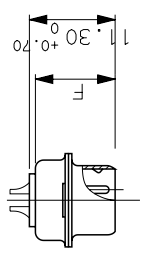
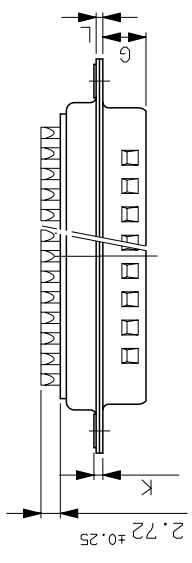
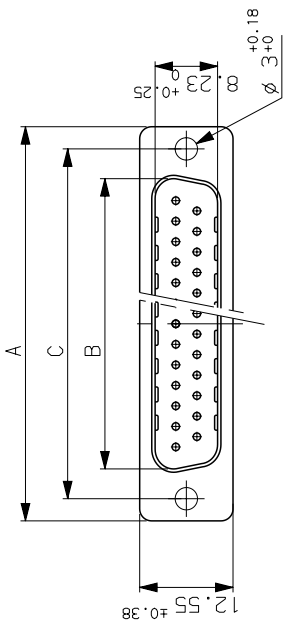
MECHANICAL DATA

- Contact force $> 0.20\text{N}$
- Retention force $> 40\text{N}$
- Insertion force according to DIN41652 Part 2
- Withdrawal force according to DIN41652 Part 2
- Mechanical endurance :200 matings / unmatings for flash gold
- :500 matings/unmatings for others parts numbers

- Material shell steel, bright tin-lead
- Material insulator glass filled thermoplastic UL94V0
- Material contacts pin:brass.
- Finish on contact area gold over nickel (see table)
- Finish on termination end bright tin-lead over nickel
- Solderability according to DIN 41640 Part 70, test 12a
- Shock according to DIN41640 Part 14, test 6c,50g
- Vibration according to DIN41640 Part 15, test 6d,20g
- 10 to 2000Hz;discontinuity $\leq 1\text{ms}$

ENVIRONMENTAL DATA

- Climatic category -55° / +125°/21
- Corrosion salt spray:24h



Dimensions are in millimeters

Shell Number of size contacts	A $+0.76_0$	B $+0.25_0$	C $+0.12_0$	F $+0.51_0$	G	H $+0.51_0$	K Max:	L $+0.22_0$	Part number
E 09	30.43	16.79	24.99	10.47	5.90 $+0.15_0$	19.02	1.50	0.80	0.4 μm gold DEP09P043TX
A 15	38.76	25.12	33.32	10.47	5.90 $+0.15_0$	27.25	1.50	0.80	1.25 μm gold DEP09P052TX
B 25	52.65	38.84	47.04	10.43	5.70 $+0.25_0$	41.02	1.50	0.80	Flash gold DAP15P043TX
C 37	68.94	55.30	63.50	10.56	5.70 $+0.25_0$	57.45	1.50	1.00	DAP15P052TX DBP25P043TX DBP25P052TX DCP37P043TX

ISS DATE 04/04/03

Latest modification by: JARRY

Designed by: JOUBERT date:27/02/95 Type of drawing: CLIENT

TITLE : PIN CONNECTORS D SUB WITH SOLDER CONTACTS

SCALE: 1:3

FRAMATOME CONNECTORS FRANCE
Rue Louis Breguet - Bp 05
72024 LE MANS Cedex
Tel. 33 (16) 43.84.08.43

SOIRIAU DRG N°

PROJECT M94D001

FORMAT A3

C01-8637-0446

PROJECT M94D001

