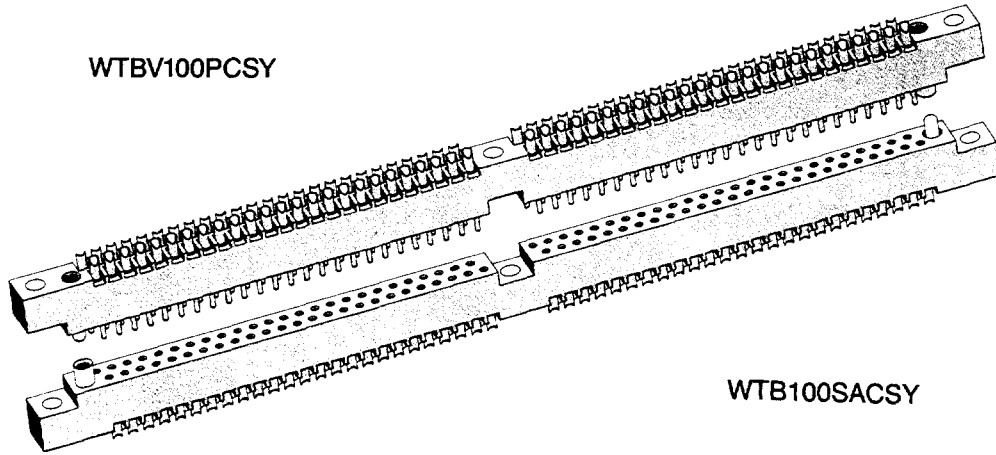


WTBV100PCSY



WTB100SACSY

**2 • ROW  
Connectors  
Sandwich  
Board**

**WTBV-WTB**

EXAMPLES:

PLUG:	WTBV	100	PC	SY
RECEPTACLE:	WTB	100	SEC	SY

**PLUG**

**RECEPTACLE**

**SERIES**

WTBV = 2-row, straight, plug, mntg. ears, RM | WTB = 2-row, straight, receptacle, mntg. ears.

**NUMBER OF CONTACTS**

90,100 | 90,100  
For smaller size, see page 2-13

**TYPE OF CONTACTS**

PC = Pin, straight, solder cup	SAC = Low force socket, straight, solder cup
PD9 = Pin, straight, dip solder, .140	SAD9 = Low force socket, straight, dip solder, .140
PD11 = Pin, straight, dip solder, .172	SAD11 = Low force socket, straight, dip solder, .172
PF3 = Pin, straight, flex-circuit, .050	SAD15 = Low force socket, straight, dip solder, .234
PF6 = Pin, straight, flex-circuit, .093	SAF3 = Low force socket, straight, flex-circuit, .050
PW40 = Pin, straight, Wire Wrap, .625	SAF6 = Low force socket, straight, flex-circuit, .093
	SAW40 = Low force socket, straight, Wire Wrap, .625

**WARNING: When interchanging contacts, position of male and female hardware is automatically reversed.**

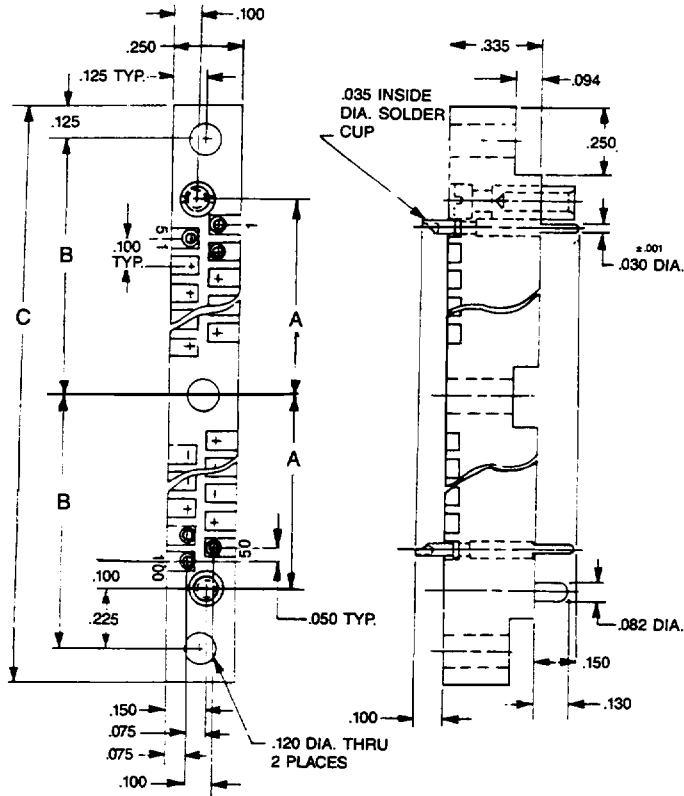
SAC = Low force socket, straight, solder cup	PC = Pin, straight, solder cup
SAD9 = Low force socket, straight, dip solder, .140	PD9 = Pin, straight, dip solder, .140
SAD11 = Low force socket, straight, dip solder, .172	PD11 = Pin, straight, dip solder, .172
SAD15 = Low force socket, straight, dip solder, .234	PF3 = Pin, straight, flex-circuit, .050
SAF3 = Low force socket, straight, flex-circuit, .050	PF6 = Pin, straight, flex-circuit, .093
SAF6 = Low force socket, straight, flex-circuit, .093	PW40 = Pin, straight, Wire Wrap, .625
SAW40 = Low force socket, straight, Wire Wrap, .625	

**TYPE OF HARDWARE**

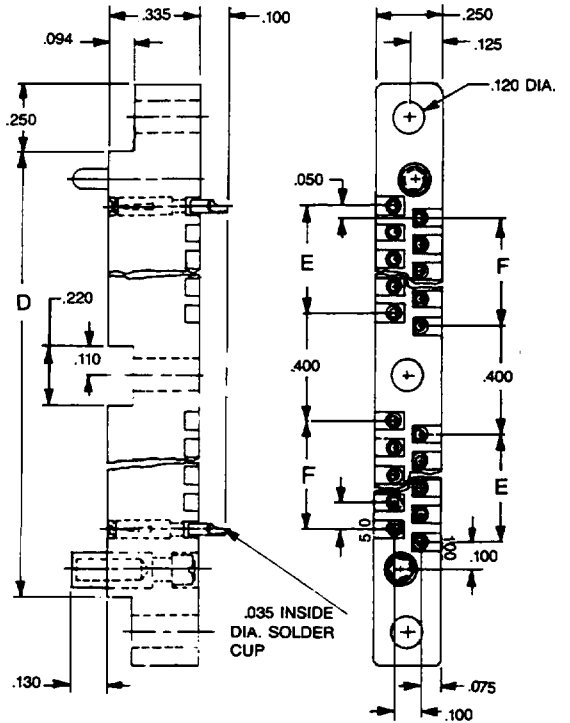
SY = Guide set | SY = Guide set

**NOTES**

- For polarized "D"-shaped guides, add dash and code number to part number (Example: -7). See "Polarization" under next tab for codes.
- Face seal gaskets: order separately. See "Gaskets" under next tab for instructions.



PLUG IMAGE  
EXAMPLE: WTBV100PCSY



RECEPTACLE IMAGE  
EXAMPLE: WTB100SACSY

**WTBV-WTB**  
**DIMENSIONS**

SIZE	A	B	C	D	E	F
90	2.475	2.700	5.650	5.150	2.200	2.100
100	2.725	2.950	6.150	5.650	2.400	2.400

2-94