

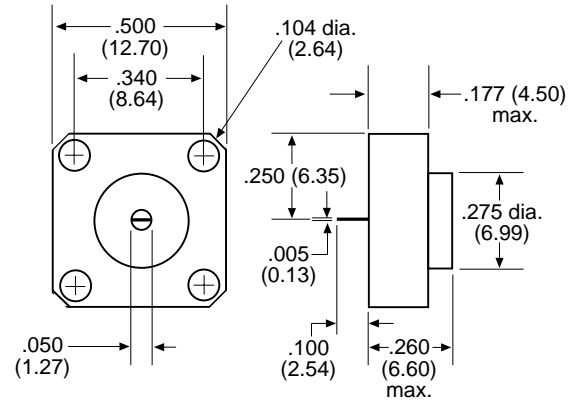
# STRIPLINE FLANGE TERMINATIONS



## PERFORMANCE SPECIFICATIONS:

PART NUMBER	FREQUENCY RANGE (GHz)	VSWR (max.)				
		DC-2	1-4	4-8	8-12	12-18
RFT502-1	DC to 2	1.10				
RFT504-1	DC to 4	1.10	1.10			
RFT508-1	DC to 8	1.10	1.10	1.15		
RFT512-1	DC to 12	1.10	1.10	1.15	1.25	
RFT518-1	DC to 18	1.10	1.10	1.15	1.25	1.30

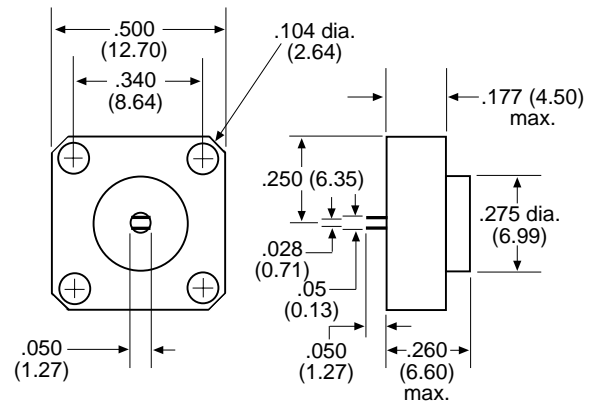
**20 WATTS**



## PERFORMANCE SPECIFICATIONS:

PART NUMBER	FREQUENCY RANGE (GHz)	VSWR (max.)			
		DC-2	2-4	4-8	8-18
RFT502-2	DC to 2	1.10			
RFT504-2	DC to 4	1.10	1.15		
RFT508-2	DC to 8	1.10	1.15	1.20	
RFT518-2	DC to 18	1.10	1.15	1.20	1.30

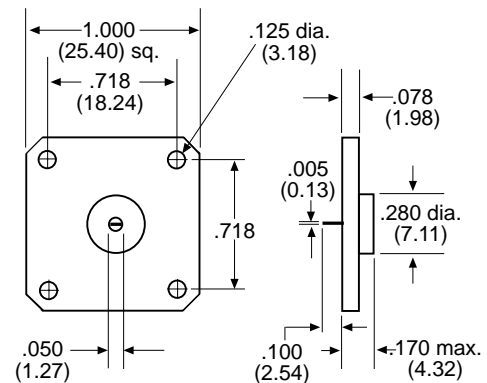
**20 WATTS**



## PERFORMANCE SPECIFICATIONS:

PART NUMBER	FREQUENCY RANGE (GHz)	VSWR (max.)			
		DC-2	2-4	4-8	8-18
RFT1002-2	DC to 2	1.10			
RFT1004-2	DC to 4	1.10	1.15		
RFT1008-2	DC to 8	1.10	1.15	1.20	
RFT1018-2	DC to 18	1.10	1.15	1.20	1.35

**10 WATTS**



**RES-NET MICROWAVE**

P.O. Box 18802 • Clearwater, FL 33762

[www.electrotechnik.com](http://www.electrotechnik.com)