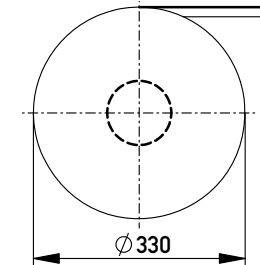
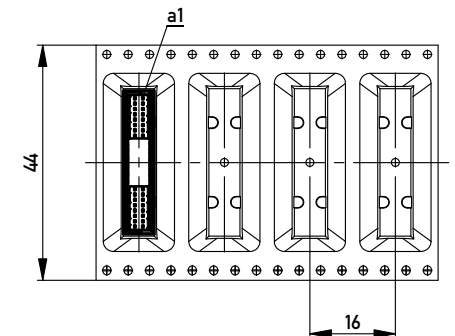
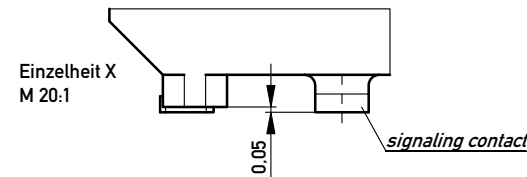
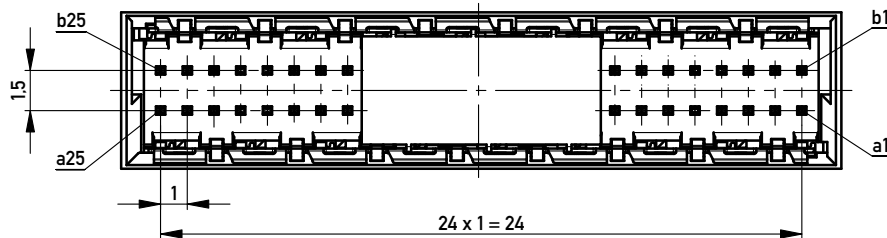


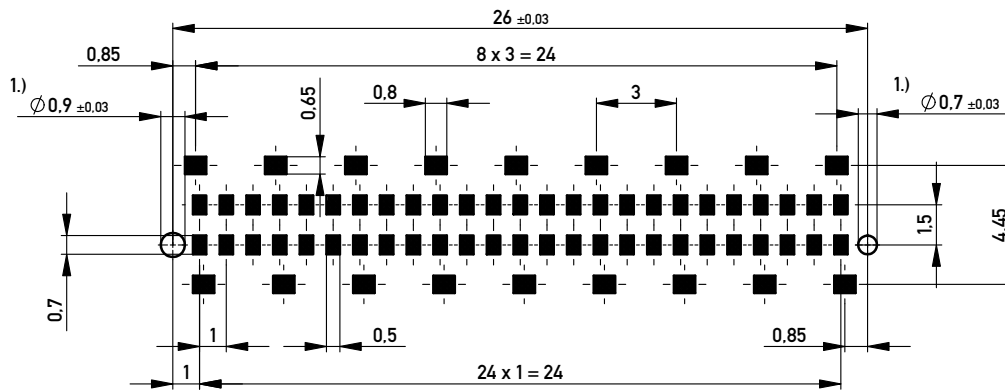
Verpackt in Gurtverpackung
Tape on Reel Packaging
Verpackungseinheit: 220 Stück
Packaging unit: 220 pcs



Abspulrichtung - Reel off Direction →



Leiterplatten-Layout Vorschlag / PCB-layout proposal



1.) Durchmesser des Bohrers / Drill tool

Anforderungsstufe 1
Performance Level 1

Kontaktbereich vergoldet
Mating Area gold plating

Anschlussbereich verzinkt 4-6 µm
Terminal Area 4-6 µm tin plating

Koplanarität der Anschlüsse ≤ 0,1 mm
Coplanarity Area of Termination ≤ 0.1 mm

| | | | | |
|--|--|--------------------------|---|---------|
| Information: | Tolerances | All Dimensions in mm | Scale | 5:1 |
| | All rights reserved. Only for Information. To ensure that this is the latest version of this drawing, please contact one of the ERNI companies before using. | | | |
| Subject to modification without prior notice. Drawing will not be updated. | Designation | | Messerleiste 10mm SMD, 50 polig Male 10mm SMD, 50 contacts | |
| | www.ERNI.com | | 224561 | |
| i | 22.04.2013 | Class | | MSPEED |
| Index | Date | | | I A3 |

Copyright by ERNI GmbH
Proprietary notice pursuant to ISO 9006 to be observed.