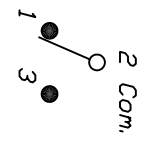


RECOMMENDED P.C.B. LAYOUT



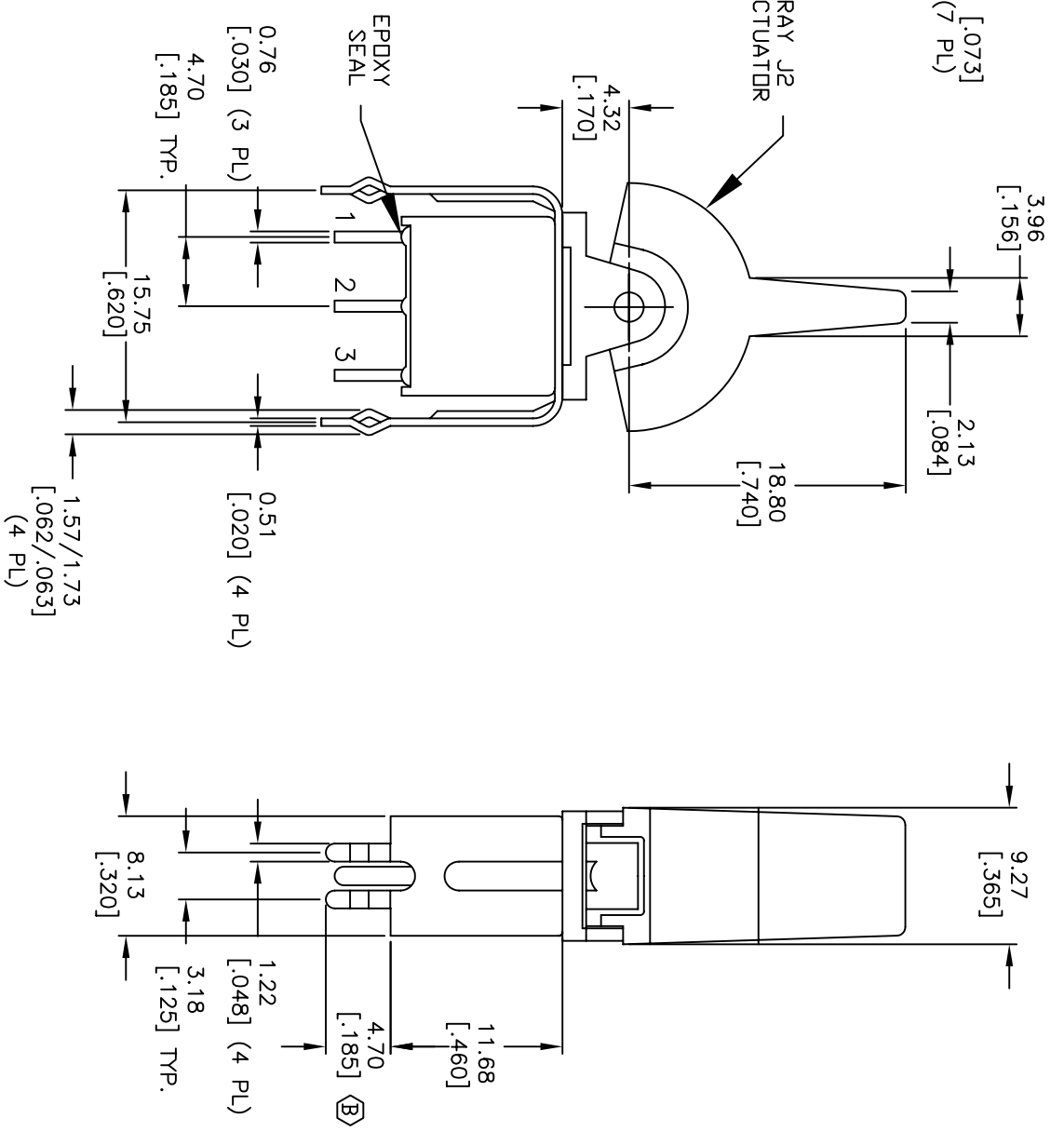
CIRCUIT: SPDT

SWITCH FUNCTION		
POS. 1	POS. 2	POS. 3
<DN>	OFF	<DN>
2-3	OPEN	2-1

() = Momentary

NOTES:

1. ALL DIMENSIONS IN MM [INCH]
2. GENERAL TOLERANCE: X.XX=±0.4
X.XX=±0.25
3. TERM. NOS. FOR REFERENCE ONLY.
4. RATING: 0.4VA max. @20V max. (AC or DC)
5. 2002/95/EC (ROHS) COMPLIANT



B	17586	CHANGED TERMINAL LENGTH (4.7)	8/24/07	BF
A	11571	RELEASED FOR PRODUCTION	7/16/01	CJB
REV.	ECN No.	DESCRIPTION	DATE	CHKD

TITLE		SCALE		DATE		DR		DWG		REV	
3004WSP4J2GRVSS2IRE		2:1		8/24/07		BF		T301496		B	



THE INFORMATION CONTAINED IN THIS DOCUMENT IS PROPRIETARY TO E-SWITCH AND IS NOT TO BE COPIED OR TRANSFERRED