

The AND-TFT-150Bxx 15.0" Open Frame Monitor series are rugged, high performance Industrial LCD Monitors, designed for commercial and industrial applications, such as kiosks, arcade games, ATM Machines, aviation simulators, military, medical, marine, security, industrial equipment, and instrumentation equipment. This product can provide high brightness and contrast to achieve better viewing effect.

1.2 Features

- 15.0 inch XGA Active Matrix Color TFT LCD Monitor
- High Contrast 700:1 Typical
- Recommend resolution: 1024x768(XGA)
- OSD controls: Allow on-screen adjustments of Brightness, Contrast, RGB Auto Color Balance, H-Position, V-position
- Multi system Video Input and auto detection video system.
- Signal loss backlight will be off / signal feed again backlight will be on
- Quick and easy integrations for Client solutions
- Universal AC Power input
- Panel Mount (option)
- Touch screen (option)
- Water Proof (IP54) (option)
- Front Bezel (option)



This product is RoHS compliant

Parameter	Specifications	Unit	Remark
Model Name	AND-TFT-150Bxx		
Screen Size	15.0" (diagonal)	inch	
Display Format	1024 x (R.G.B) x 768	dot	
TFT-LCD Active Area	304.128 (H) x 228.096 (V)	mm	
Pixel Pitch	0.297 (H) x 0.297 (V)	mm	
Contrast Ratio	700:1(Typ.)		
Brightness	250(Typ.)	Cd/m ²	
Viewing Angle	-85~85(H); -80~80(V)(Typ.)	deg	
Input/Output Interface	Video and S-video / D-Sub 15 pin female for VGA / USB (A Type) or RS-232(DB9 Female) for Touch Screen Driver (Option)		
Power Source	100-240V _{AC} 50-60Hz, Universal / +12V _{DC} @ 3A		
Power Consumption	<22W		
Touch Screen Controller	5 wire Resistive Driver USB/ RS232 (Option)		
Operating Temperature	0~65 (With Touch 0~65)	°C	
Storage Temperature	-20~65	°C	
Lamp Life Time	30000 (Min)	Hr	25±2°C I _L =8mA

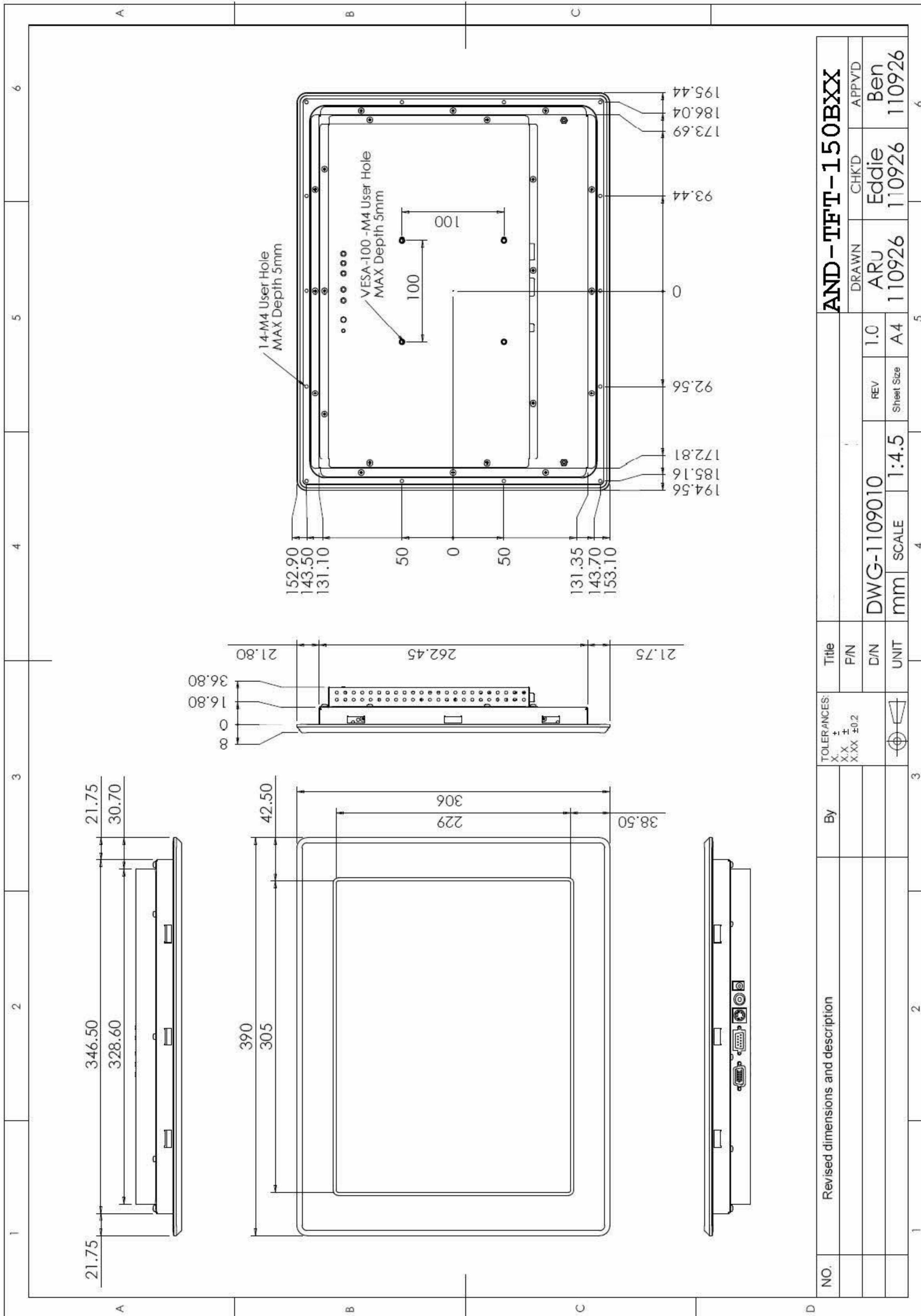
4. Ordering Information

Parameter	AND-TFT-150B00-K00R	AND-TFT-150B5A-K00R	AND-TFT-50B5B-K00R	
CVBS	1	1	1	
S-Video	1	1	1	
VGA	XGA (1024x768)	XGA (1024x768)	XGA (1024x768)	
Touch Panel Type	-	5W Resistive	5W Resistive	
Touch Screen Interface	-	USB	RS232	
Outline Dimension	362.5(W) x 278.45(H) x 40(D)	362.5(W) x 278.45(H) x 40(D)	362.5(W) x 278.45(H) x 40(D)	
Weight (Include Accessory)	3.3 (4.1)	3.4 (4.2)	3.4 (4.2)	Kg
Frame Material (Color)	Iron	Iron	Iron	

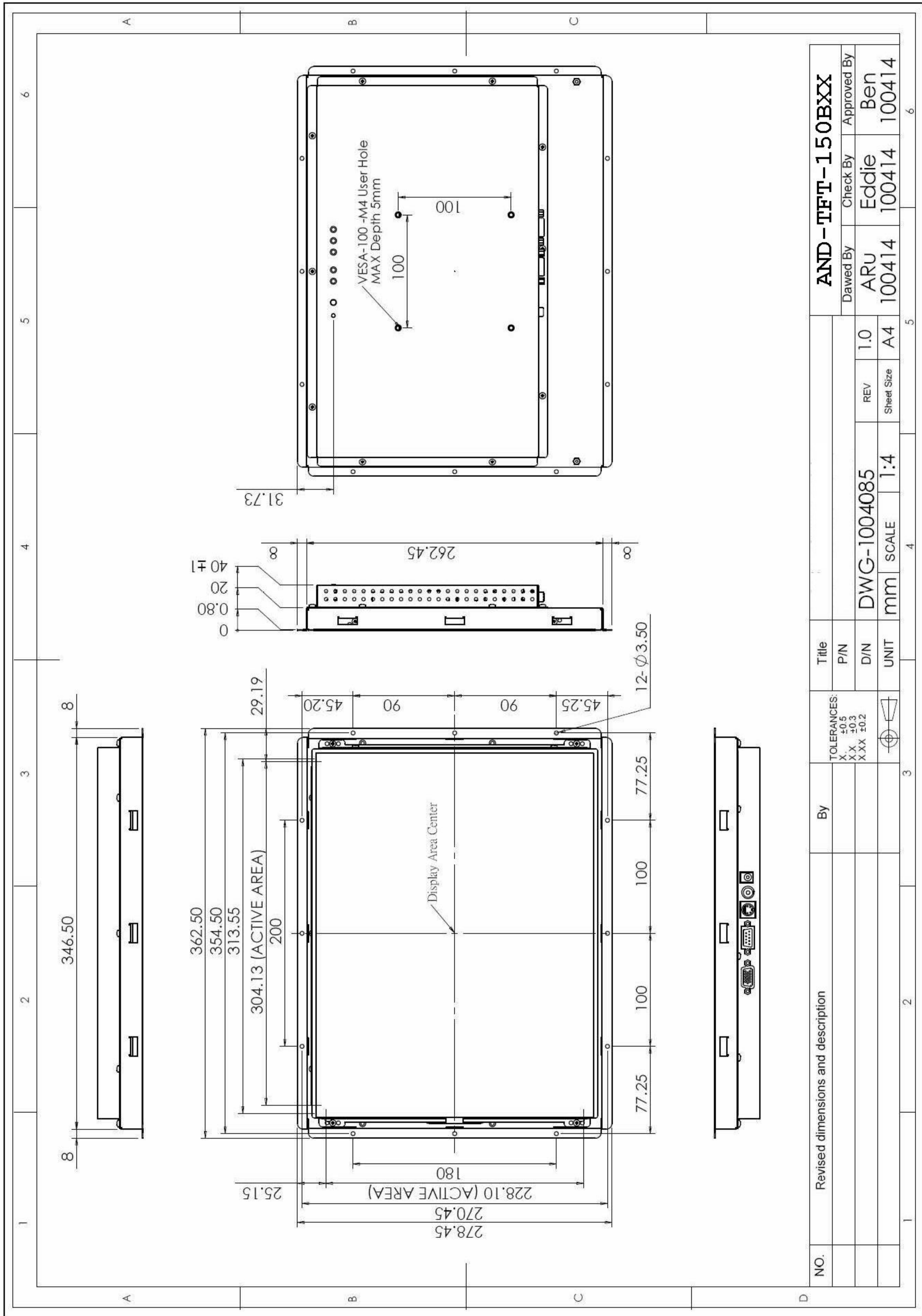
Note: Weight \pm 10%

This product is RoHS compliant

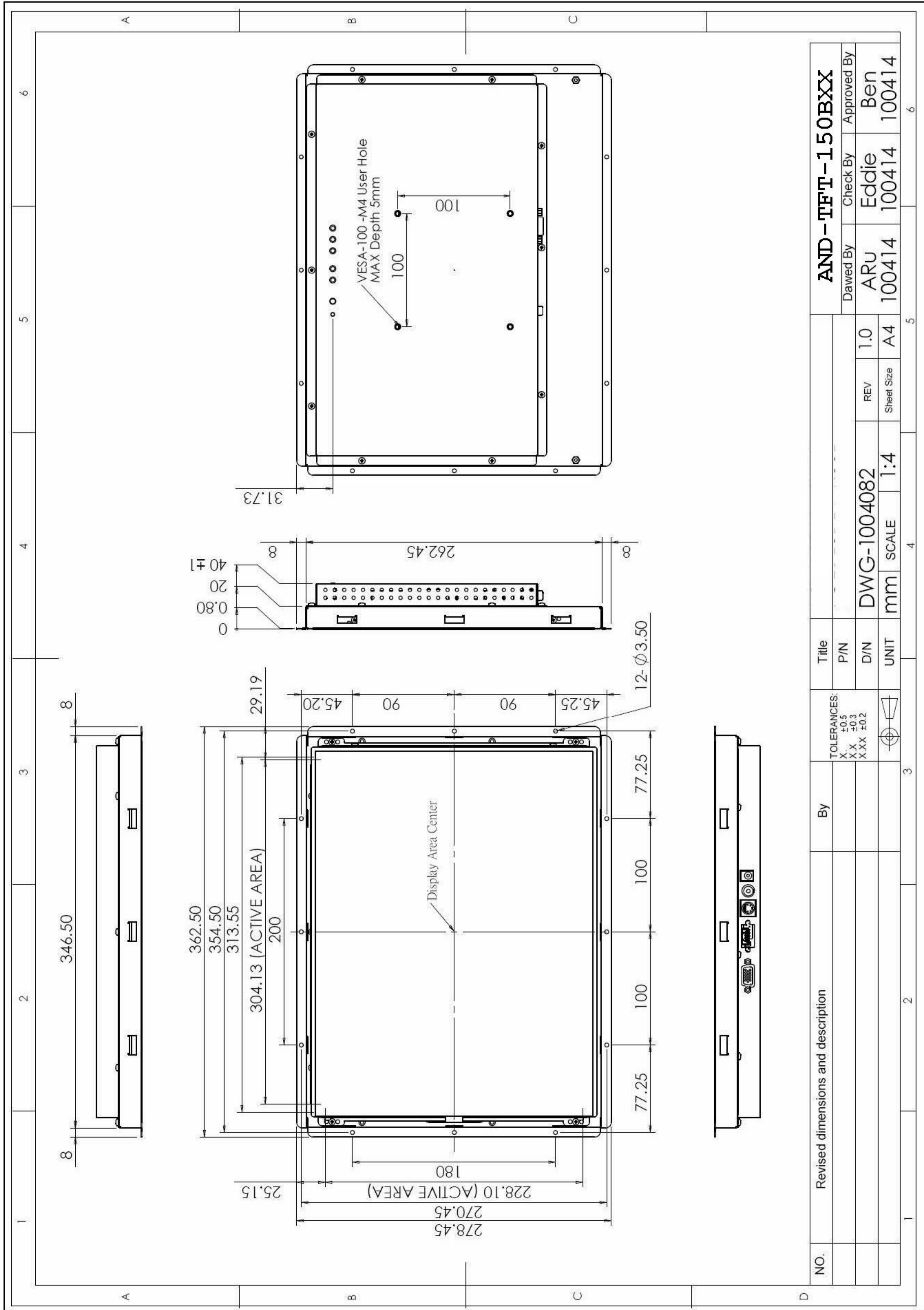
6.10 AND-TFT-150B5B-G00R



6.3 AND-TFT-150B5B-K00R



6.2 AND-TFT-150B5A-K00R

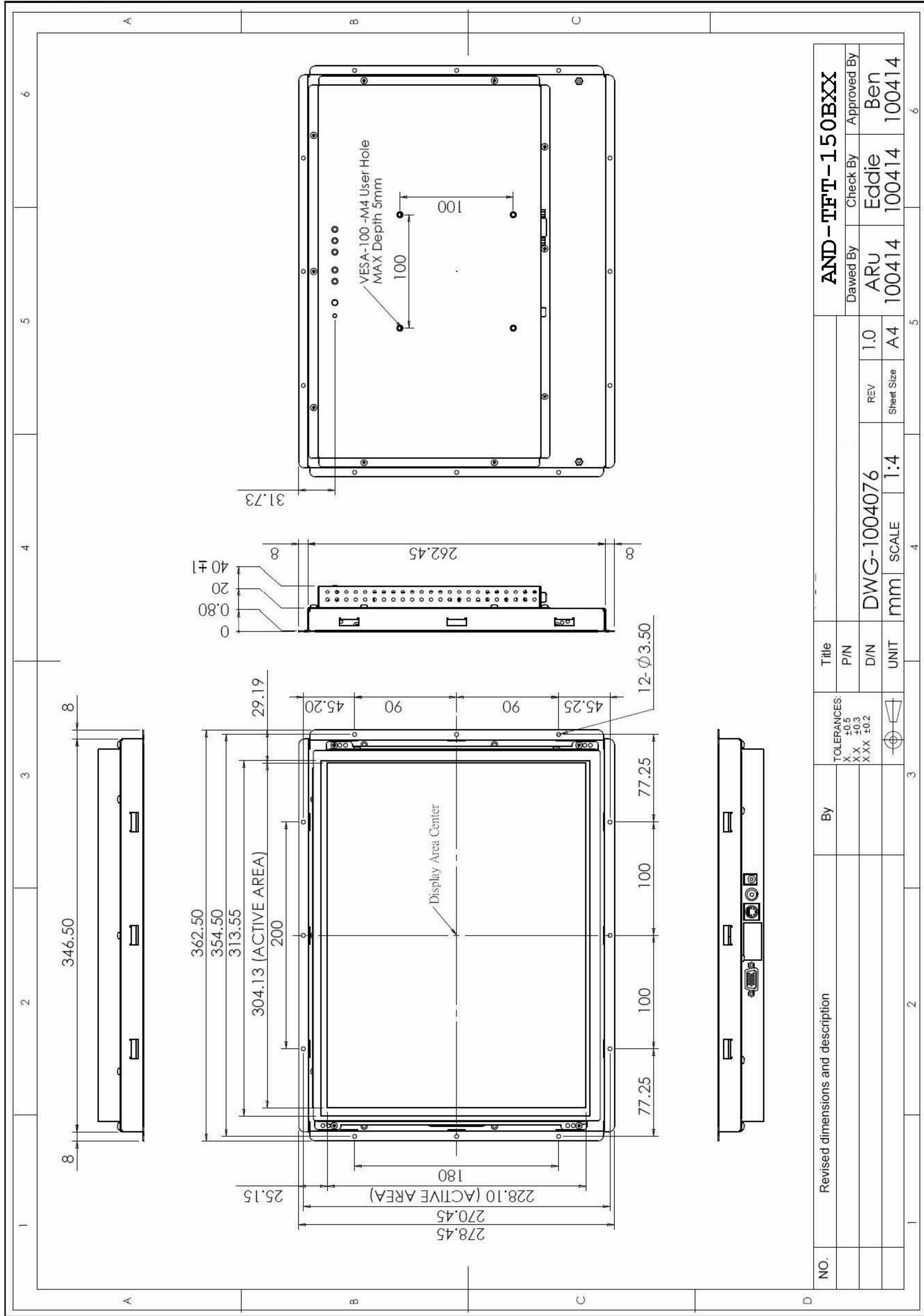


NO.	Revised dimensions and description	By	TOLERANCES: X ±0.5 XX ±0.3 XXX ±0.2	UNIT	SCALE	REV	D/N	P/N	Title	AND-TFT-150BXX	
										DWG-1004082	1:4
										D/Drawn By	ARU
										C/Check By	Eddie
										A/Approved By	Ben
										D/Drawn No.	100414
										C/Check No.	100414
										A/Approved No.	100414



6. Mechanical Drawing

6.1 AND-TFT-150B00-K00R



NO.	Revised dimensions and description	By	TOLERANCES: X.X ±0.5 X.X ±0.3 X.XX ±0.2	Title	AND-TFT-150BXX		
					Drawn By	Check By	Approved By
				D/N	DWG-1004076	REV	1.0
				UNIT	mm	SCALE	1:4
						Sheet Size	A4
						100414	100414
						100414	100414



7. Packing List

Before you begin installing the Open Frame Monitor, please make sure that the following materials have been shipped:



- A. AC to DC Adapter (100-240V_{AC} 50-60Hz to +12V_{DC} @ 3A)
- B. Power Cord (L:1800mm, Plug Type B for USA)
- C. Video Cable (L:1800mm ,AND-TFT-150Bxx-K00R Only)
- D. S-Video Cable (L: 1800mm, AND-TFT-150Bxx-K00R Only)
- E. VGA Cable (L:1600mm)
- F. USB Cable (L:1800mm , AND-TFT-150B5A Only)
- G. RS-232 Cable (L:1800mm , AND-TFT-150B5B Only)
- H. Touch Screen Driver CD Disk (AND-TFT-150B5A & AND-TFT-150B5B Only) / User Manual
- I. M4x8 Screw x4 pcs
- J. Mount Clamp and Screw x12 pcs (AND-TFT-150B5x-Gx0R Only)

If any of these items are missing or damaged, contact your distributor or sales representative immediately.

8. Installing the Monitor

8.1 Power cable connection:

Connect the power cord to the AC outlet, and connect the power to the monitor through the AC/DC adapter.

8.2 VGA signal cable connection:

Plug one end of the 15-pin signal cable to the VGA connector at the rear of the PC system and the other end to the Open Frame monitor.

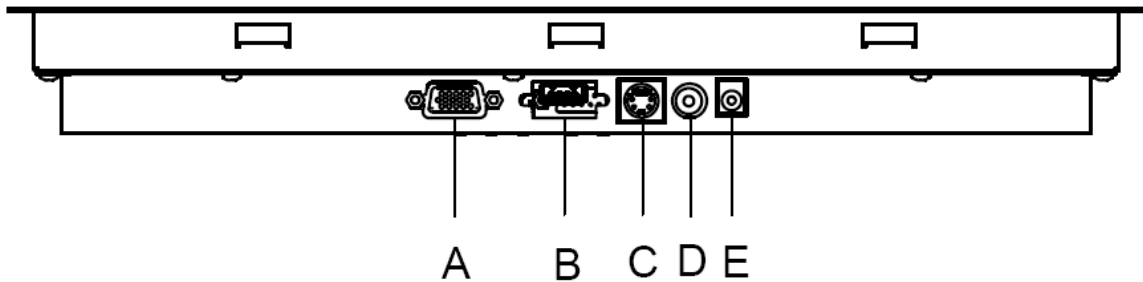
Secure the connectors with the screws on the cable connector at both ends.

8.3 Video / S-Video Cable connection:

If required, connect Video / S-Video Cable from the Open Frame Monitor to the DVD or CCD Camera.

8.4 Switch on the power:

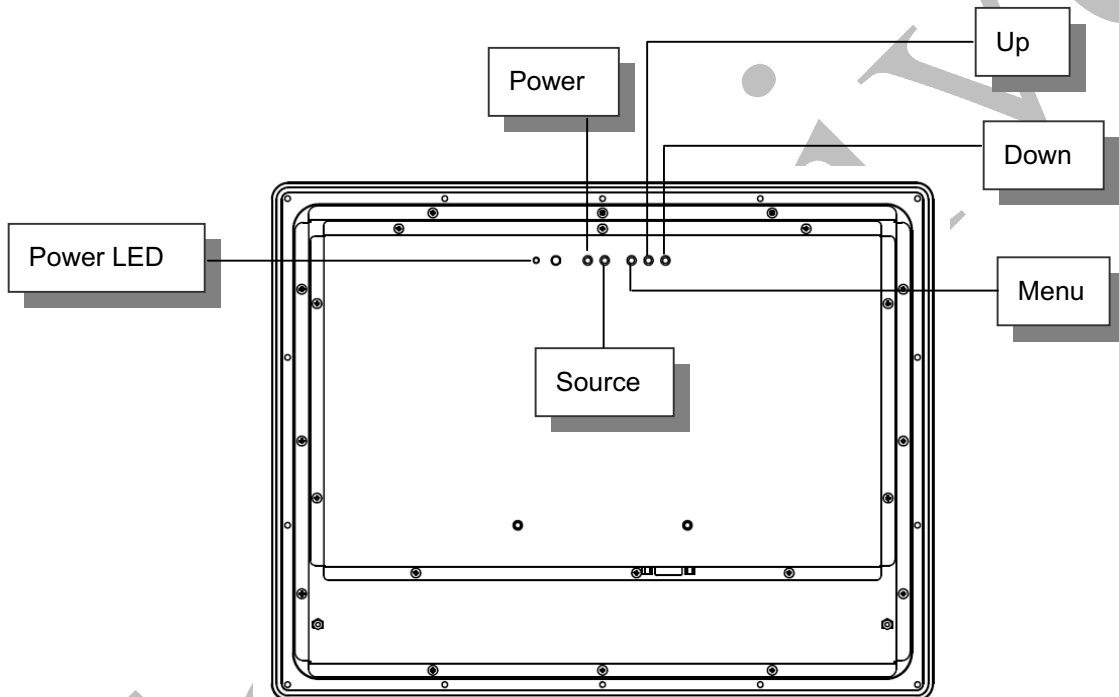
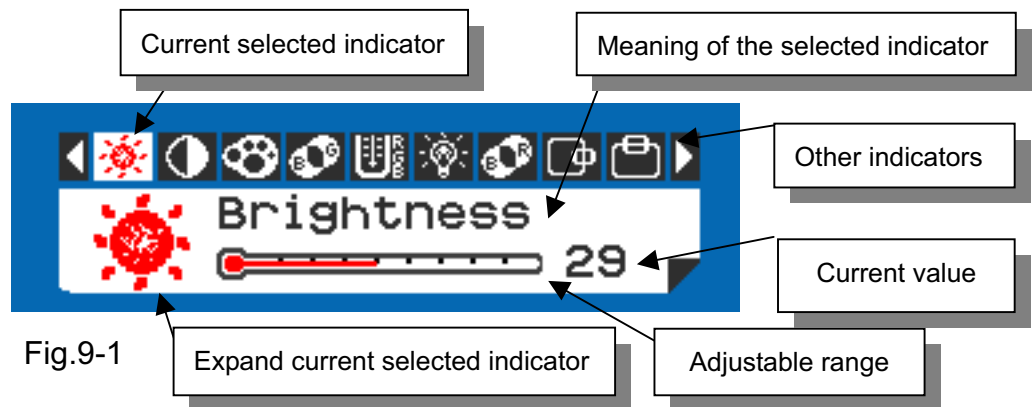
Switch on the power switch on the rear cover of the Open Frame Monitor.



- A. VGA D-sub 15 (Female)
- B. USB / RS-232 Port (For Controller)
- C. S-Video (Y/C Video) In
- D. Video (CVBS) In
- E. DC-In (+12V_{DC} The DC jack core is positive)

9. OSD Control

9.1 Menu Operation



Operations of key board :

1. To navigate the menu, press [MENU]. (Fig.9-1)
2. The indicator lighting up in white color is the selected adjustment item.
3. To Next Item of the menu, press [MENU] again.
4. The operations below are only available when "Menu" is started.
5. Press [UP] / [DOWN] to adjust the value of the selected item.

Overview of the menu :

Firmware Version must be \geq VER 0.26








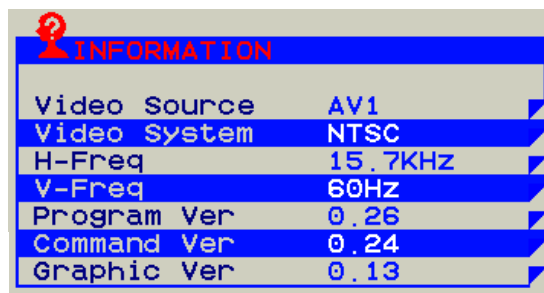
Indicator	Meaning	Adjustable range	For	Remark
	Brightness	0 ~ 64	AV / S-Video / VGA	Adjust-Bar
	Contrast	0 ~ 64	AV / S-Video / VGA	Adjust-Bar
	Color	0 ~ 64	AV / S-Video	Adjust-Bar
	Tint	0 ~ 32	AV / S-Video	Adjust-Bar
	Sharpness	0 ~ 16	AV / S-Video	Adjust-Bar
	Dimmer	0 ~ 9	AV / S-Video / VGA	
	Color Tone	Normal / Warm / Cool	AV / S-Video / VGA	
	H-Position	-25 ~ +25	AV / S-Video / VGA	Balance-Bar
	V-Position	-10 ~ +10	AV / S-Video / VGA	Balance-Bar
	Auto		VGA	
	Scan	Over Scan / Under Scan	AV / S-Video	
	Information		AV / S-Video / VGA	Fig.9-2
	Setup		AV / S-Video / VGA	Fig.9-3
	Factory Set		AV / S-Video / VGA	
	Exit		AV / S-Video / VGA	







Fig.9-2



Setup Menu :



Fig.9-3

Indicator	Meaning	Adjustable range	Function	Remark
	Show Status	ON / OFF	Show signal status.	ON: Show OFF: Hidden
	Blue Screen	ON / OFF	If loss signal will put on the blue or black screen.	ON: Blue OFF: Black
	Auto Power On	ON / OFF	Power input module will be auto turn on.	ON: Auto OFF: Manual
	Auto Saving	OFF / 3s / 5s / 15s / 30s	If signal lost over setting times will be power off.	ON: Auto OFF: Normal
	Detect Source	ON / OFF	Auto detection which source is existence and change.	ON: Auto OFF: Normal
	Return			

Note : VGA only type don't have Detect Source function.

9.2 Operations

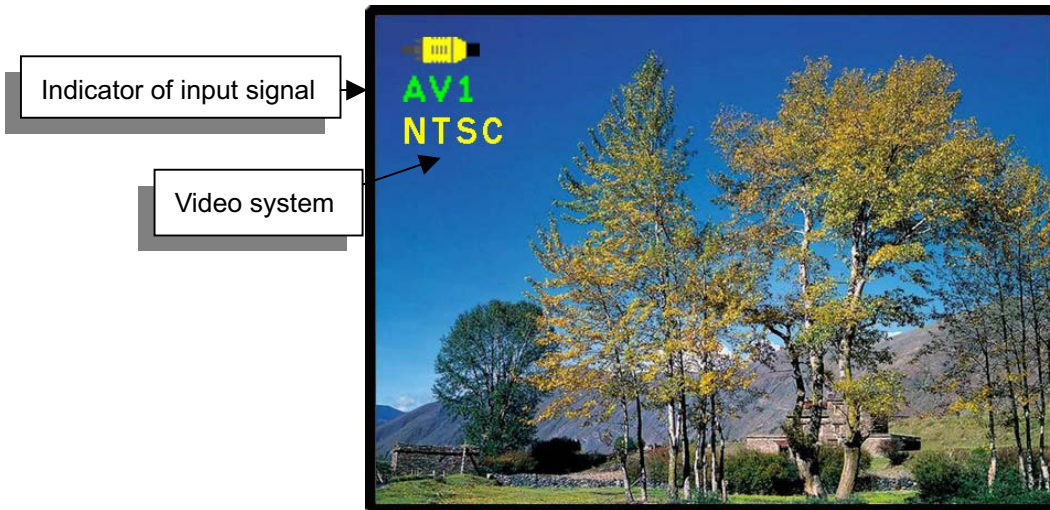





Fig.9-4

[Power] : Monitor power on / off

[Source] : Input signal switch

Overview of input signals :

Indicator	Input signal	Interface	Video system
	AV1	Composite	NTSC / PAL / SECAM
	S-Video1	Y/C	NTSC / PAL / SECAM
	VGA	Analog RGB	640x480_60 / 800x600_60 / 1024x768_60 / 1280x1024_60