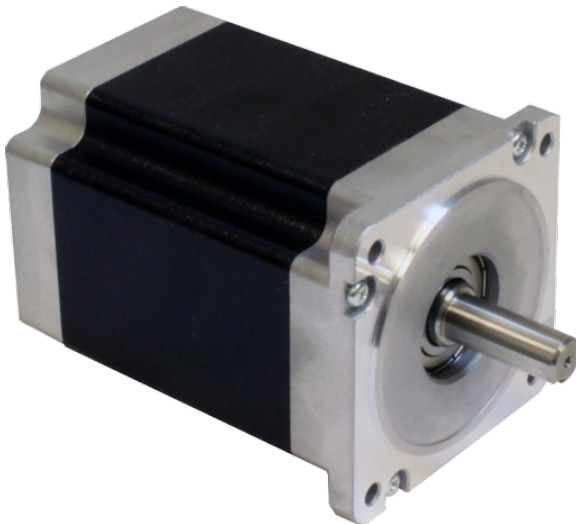


## HT34-490

NEMA 34 High Torque Step Motor

1pc. - 545.00  
50pc. - 408.75



### Product Features

- 2-phase hybrid step motor
- High torque design
- Standard NEMA 34 dimensions
- Optimized for high bus voltage operation



## Description

### Product Description:

The HT34-490 two-phase stepper motor is designed for use with the STAC6 series of stepper drives (120 VAC input versions only) and is suitable for a wide range of motion control applications. The motor comes with an integral 10 ft shielded cable and a preassembled drive connector for easy connection to a STAC6 drive.

When not used with STAC6 drives, the preassembled drive connector can be removed to reveal 8 motor leads plus 1 ground lead. The 8 motor leads can be connected in one of three ways to the step motor drive of your choice: bipolar series (required for STAC6 drives), bipolar parallel, or unipolar.

**Note:** The HT34-490 step motor has been superseded by the [HT34-497](#) step motor for use in all new applications with STAC6 stepper drives.







Please note that a VL series gearhead purchased for this motor will require a special mounting adaptor and 2 weeks lead time. Please contact customer service for the price of this adaptor.

## Specifications

<b>Part Number:</b>	HT34-490
<b>Frame Size:</b>	NEMA 34
<b>Motor Type:</b>	High torque
<b>Part Number w/Double Shaft:</b>	HT34-490D
<b>Part Number w/Encoder:</b>	HT34-490D-YAA
<b>Motor Length:</b>	6.14 inches
<b>Number of Lead Wires:</b>	8
<b>Lead Wire Configuration:</b>	shielded cable w/ connector
<b>Lead Wire/Cable Length:</b>	10 feet inches
<b>Lead Wire Gauge:</b>	22 AWG
<b>Unipolar Holding Torque:</b>	1198 oz-in
<b>Bipolar Holding Torque:</b>	1694 oz-in
<b>Step Angle:</b>	1.8 deg
<b>Bipolar Series Current:</b>	4.45 A/phase
<b>Bipolar Series Resistance:</b>	1.04 Ohms/phase
<b>Bipolar Series Inductance:</b>	11.2 mH/phase
<b>Bipolar Parallel Current:</b>	8.90 A/phase
<b>Bipolar Parallel Resistance:</b>	0.26 Ohms/phase
<b>Bipolar Parallel Inductance:</b>	2.80 mH/phase
<b>Unipolar Current:</b>	6.29 A/phase
<b>Unipolar Resistance:</b>	0.52 Ohms/phase
<b>Unipolar Inductance:</b>	2.80 mH/phase
<b>Rotor Inertia:</b>	6.80E-02 oz-in-sec <sup>2</sup>
<b>Integral Gearhead:</b>	No
<b>Weight:</b>	11.0 lbs
<b>Storage Temperature:</b>	-40 to 70 °C

<b>Operating Temperature:</b>	-20 to 50 °C
<b>Insulation Class:</b>	Class B (130 °C)
<b>Maximum Radial Load:</b>	42 lbs
<b>Maximum Thrust Load:</b>	33 (2.2 w/ encoder) lbs
<b>Shaft Run Out:</b>	0.002 inch T.I.R. max
<b>Radial Play:</b>	0.001 inch max w/ 1.1 lb load
<b>End Play:</b>	0.003 inch max w/ 2.2 lb load
<b>Perpendicularity:</b>	0.003 inches
<b>Concentricity:</b>	0.003 inches

## Downloads

<b>Family Datasheet:</b>	 <a href="#">StepMotorWiring-8-lead-cabled-solid.pdf</a>
<b>Datasheet:</b>	<a href="http://s3.amazonaws.com/applied-motion-pdf/HT34-490.pdf">http://s3.amazonaws.com/applied-motion-pdf/HT34-490.pdf</a>
<b>2D Drawing:</b>	 <a href="#">HT34-490_RevJ.pdf</a>  <a href="#">HT34-490D-YAA_RevB.pdf</a>
<b>3D Drawing:</b>	 <a href="#">34HT156D.igs</a>  <a href="#">HT34-490D_156mm_YAA_Enc.igs</a>
<b>Speed-Torque Curves:</b>	 <a href="#">STAC6_speed-torque.pdf</a>

## Pricing

	<b>HT34-490</b> Part No. w/ Single Shaft	<b>HT34-490D</b> Part No. w/ Double Shaft	<b>HT34-490D-YAA</b> Part No. w/ Encoder
<b>1pc.</b>	\$545.00	\$545.00	\$671.00
<b>25pc.</b>	\$468.70	\$468.70	\$577.06
<b>50pc.</b>	\$408.75	\$408.75	\$503.25
<b>100pc.</b>	<a href="#">Request a Quote</a> for 100+ piece pricing.		