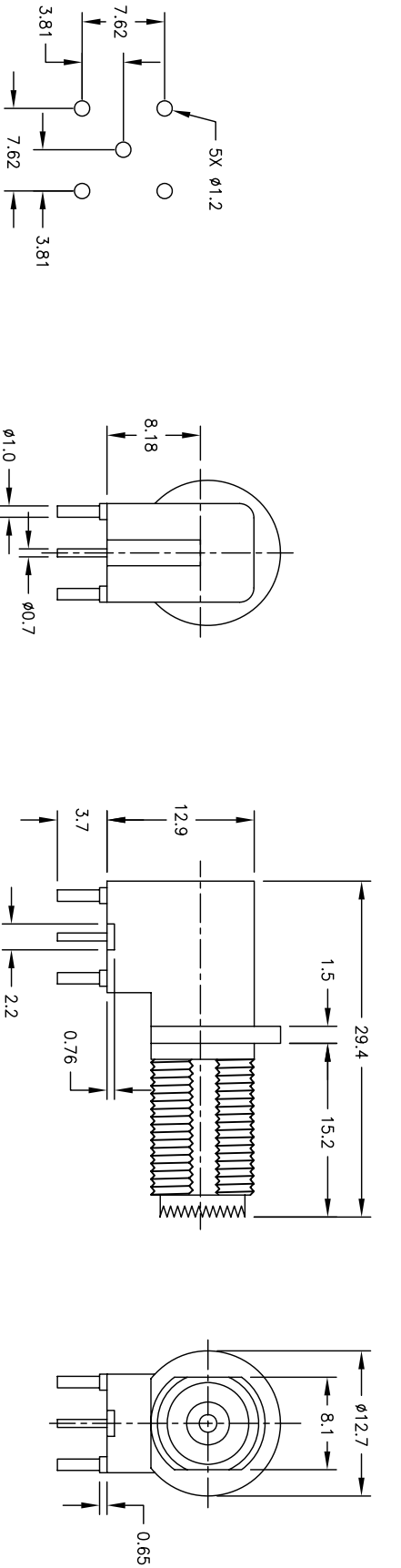
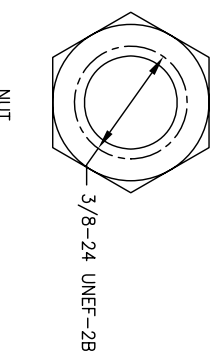


Rev	AWO #	Description	Date	Appr
-	6214	RELEASED	2/17/06	

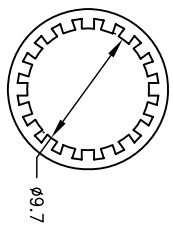
APPROVED: _____ TITLE: _____
 DATE: _____



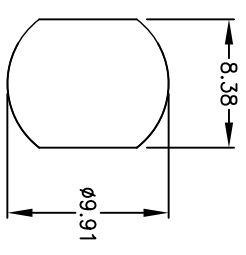
RECOMMENDED PCB LAYOUT



NUT



LOCK WASHER



RECOMMENDED PANEL CUTOUT

SPECIFICATIONS

Material:

- Insulator: PE 606
- Body: Diecast Zinc, Nickel plated
- Contact insulation: Teflon
- Contacts: Phosphor Bronze, Tin plated.
- Nut: Brass, Nickel plated
- Washer: Steel, Nickel plated

Electrical

- Normal Impedance: 50 Ohms
- Frequency Range: 0 – 4 GHz
- Maximum Peak Voltage: 500V
- Insulation Resistance: 5000 Mohms min @ 500 VDC
- Dielectric Withstanding Voltage: 1500 VAC rms.
- Environmental:
- Lead free, RoHS compliant.
- Recommended soldering temp: 235 for 5 sec.



ADAM TECH

909 Railway Avenue, Union, NJ 07083
 Phone: 908-687-5000 Fax: 908-687-5710

TITLE: MINIAUTURE UHF , RIGHT ANGLE, PCB,
 50 OHM

UNLESS OTHERWISE SPECIFIED ALL DIMENSIONS ARE MM [INCHES] TOLERANCES: EXCEPT AS NOTED	
.X .XX .XXX	± .10 ± .020 ± .015
ØX ØXX ØXXX	± .10 ± .015 ± .010
APPROVALS	DATE
DRAWN	SS
CHECKED	
APPROVED	

SIZE	PART NO.	REV.
X	RF9-02-P-00-50	-
REF:	SCALE: NTS	SHEET 1 OF 1