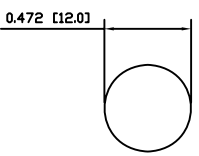
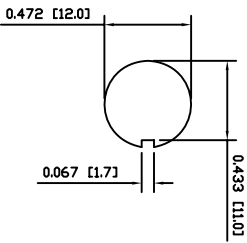
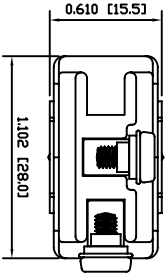


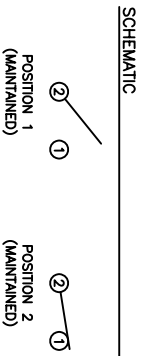
- MATERIALS**
- BODY: Phenolic, UL94 V-0
 - ACTUATOR: Nickel Plated Brass
 - BUSHING: Nickel Plated Brass
 - HOUSING: Nickel Plated Steel
 - HARDWARE: Nickel Plated Brass
 - SPACER PLATE: Epoxy Board
 - SPRING: Steel
 - ACTUATOR PLUNGER: Phenolic, UL94 V-0
 - MOBILE CONTACT BAR: Silver Plated Copper
 - CENTER PIVOT: Silver Plated Copper
 - CONTACTS: Silver Alloy Clad Copper
 - TERMINALS: Brass Steel

- SPECIFICATIONS**
- FUNCTION: 1P1T OFF-ON
 - RATINGS: ANSI/UL1054 and CAN/CSA C22.2 No.55 (E194579): 20A 125VAC [cUlrus] 15A 277VAC [cUlrus] 2HP 125/277VAC [cUlrus]
 - CONTACT RESISTANCE: Initial: 10mΩ Max.
 - INSULATION RESISTANCE: 10MΩ Min.
 - DIELECTRIC STRENGTH: 1,500VAC for 1 Minute
 - OPERATING LIFE: 6,000 Cycles [cUlrus]
 - TEMPERATURE: Operating: 0°C to 85°C [cUlrus]
- APPROVALS: **RoHS COMPLIANT**



SUGGESTED PANEL CUTOUT

ALTERNATE PANEL CUTOUT



SCHEMATIC

ACTUATOR BODY	B	10/06/10	CAB
MATERIALS	B	10/06/10	CAB
SPECIFICATIONS	B	10/06/09	CAB
REFERENCE	REV.	DATE	BY

THE INFORMATION CONTAINED IN THIS DOCUMENT IS PROPRIETARY TO E-SWITCH AND IS NOT TO BE COPIED OR TRANSMITTED

CONNECTED PANEL CUTOUT, SPECIFICATIONS, AND MATERIALS	B	19133	10/06/10	CAB
INITIAL RELEASE DESCRIPTION	A	1909016	09/06/20	CAB
	REV.	DATE	DRAWN BY	

INCHES [MILLIMETERS]	SCALE	PROJECTION
GENERAL TOLERANCES ±0.008 [±0.2] / ±1'	DRAWING NOT TO SCALE	



ST16MD00

DRAWING NUMBER	DATE	REVISION
34-ST16MD00	JUNE 10, 2010	B