

# Data Sheet



Helping Engineer the Technology of Power

**ICE Components, Inc.**

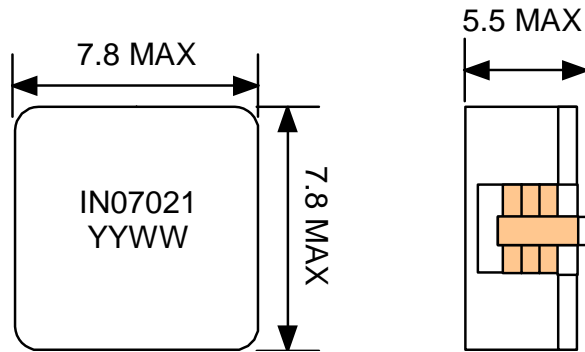
Tel 678-560-9172 Fax 678-560-9304

cust.serv@icecomp.com

www.icecomponents.com

1165 Allgood Rd., Ste. #20, Marietta, GA 30062

## Mechanical Drawing



unit:mm

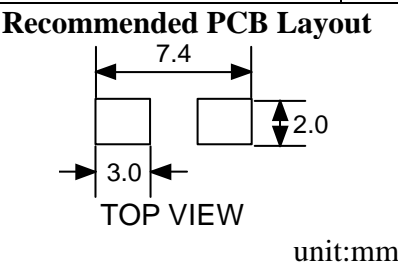
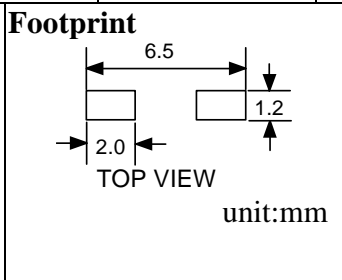
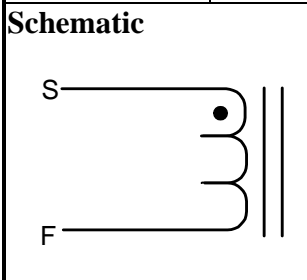
### General Information

<b>Customer</b>	
<b>Part Number</b>	IN07021
<b>Revision</b>	0
<b>Description</b>	Inductor
<b>Date</b>	AUG-07-2009
<b>Reference</b>	--
<b>Doc Control #</b>	--
<b>Issue(For ICE use only)</b>	--

### Specification

### Sample Test Data

Item	Pins	Spec	Test Condition	Sample Test Data
Inductance	S – F	2.4 uH +/- 20%	100 kHz, 0.1Vrms, series (0Adc)	
	S – F	2.0 uH typ.	100 kHz, 0.1Vrms, series (8Adc)	
DCR	S – F	(5.8 mOhm typ.) 6.5 mOhm max	25 deg C	
SRF	S – F	30 MHz min		



- ### Remarks
1. This is RoHS compliant product.
  2. Operating Temperature: -40degC to +130degC
  3. Inductance vs. Current Curve as attached.

Sample approval is required before release to production. Sample specifications take precedence over customer specifications.

Rev.	Description	PRD	CHK	APP	Date	NTFY
0	Initial release	Emily	Gary	L. L. Chou	2009/8/7	2009/8/7

Customer Signature

