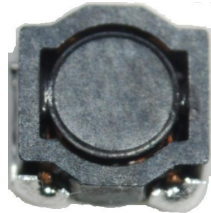


# SMD Power Inductor CDRH40D18R



Halogen Free



## Description

- Ferrite drum core construction.
- Magnetically shielded.
- L × W × H: 4.2 × 4.2 × 2.0mm Max.
- Product weight: 110mg (Ref.)
- Moisture Sensitivity Level: 1
- RoHS compliance.
- Halogen Free available.

## Environmental Data

- Operating temperature range: -40°C ~ +105°C (including coil's self temperature rise)
- Storage temperature range: -40°C ~ +105°C
- Solder reflow temperature: 260 °C peak.

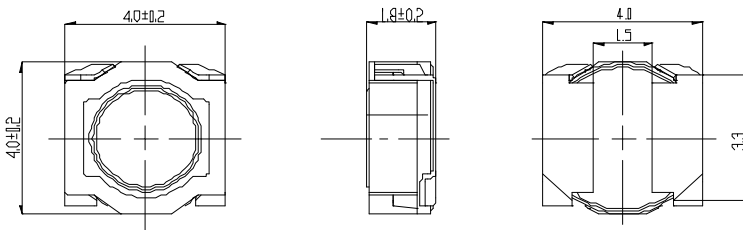
## Packaging

- Carrier tape and reel packaging
- 13" diameter reel
- 3000pcs per reel

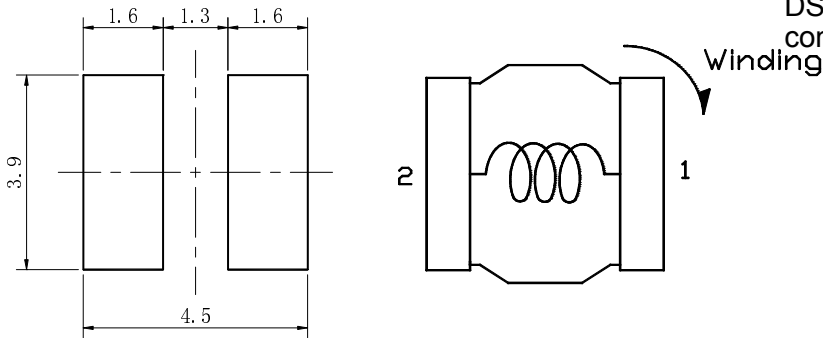
## Applications

- Ideally used in Mobile phone, PDA, MP3, HDD, DSC/DVC, Note book PC, etc as DC-DC converter power supply.

## Dimension - [mm]



## Land pattern and Schematics - [mm]



# SMD Power Inductor CDRH40D18R



## Electrical Characteristics

Part name	Stamp	Inductance [ $\mu$ H] ※1 [Within ]	D.C.R. (m $\Omega$ ) [Max.] (Typ.) (at 20°C)	Saturation Current (A) ※2		Temperature Rise Current (A) ※3
				(at 20°C)	(at 105°C)	
CDRH40D18RHF-1R8NC	D	1.8 $\pm$ 30%	48.4(38.7)	2.10	1.80	2.60
CDRH40D18RHF-2R2NC	E	2.2 $\pm$ 30%	55.4(44.3)	1.80	1.50	2.40
CDRH40D18RHF-3R3NC	G	3.3 $\pm$ 30%	79.5(63.6)	1.45	1.25	2.00
CDRH40D18RHF-4R7NC	J	4.7 $\pm$ 30%	99.5(79.6)	1.25	1.00	1.70
CDRH40D18RHF-6R8NC	L	6.8 $\pm$ 30%	144(120)	1.00	0.85	1.35
CDRH40D18RHF-100MC	N	10 $\pm$ 20%	185(154)	0.85	0.70	1.25
CDRH40D18RHF-150MC	Q	15 $\pm$ 20%	306(255)	0.70	0.60	0.90
CDRH40D18RHF-220MC	S	22 $\pm$ 20%	443(369)	0.60	0.50	0.73
CDRH40D18RHF-270MC	T	27 $\pm$ 20%	588(490)	0.50	0.43	0.62
CDRH40D18RHF-330MC	U	33 $\pm$ 20%	671(559)	0.45	0.40	0.55

※1 Inductance measuring condition at 100kHz .

※2 Saturation current: The value of DC current when the inductance decreases to 70% of its nominal.

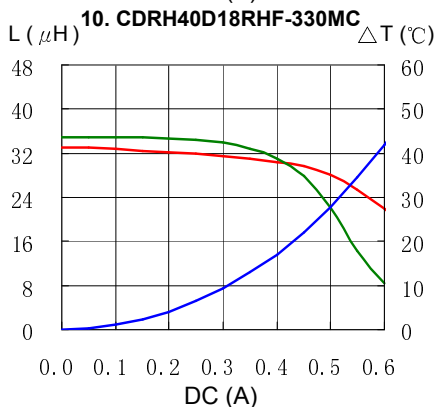
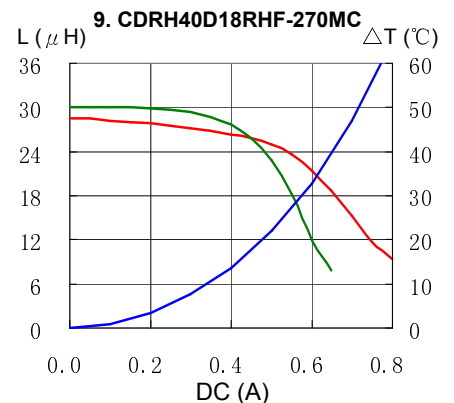
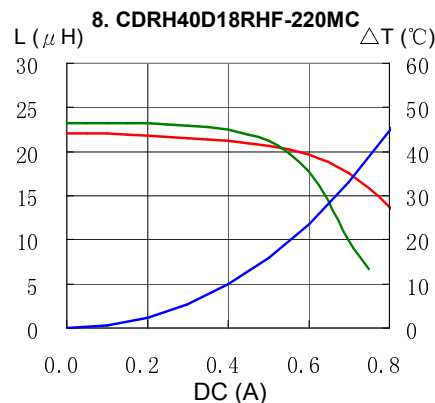
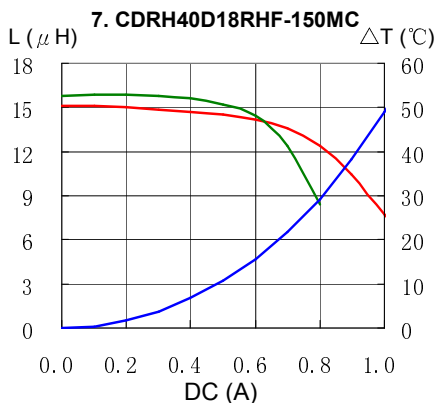
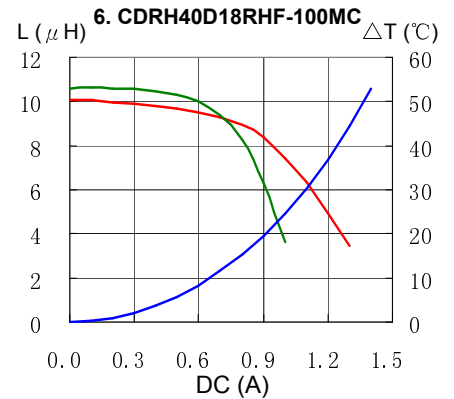
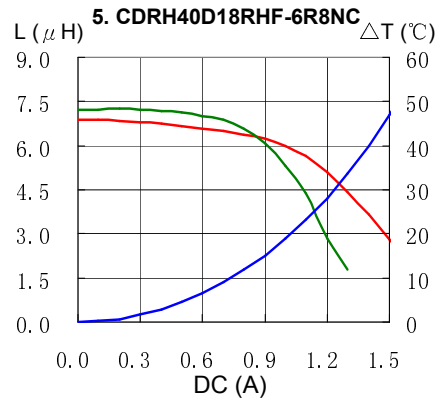
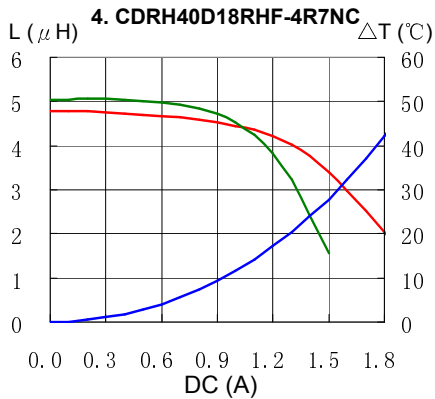
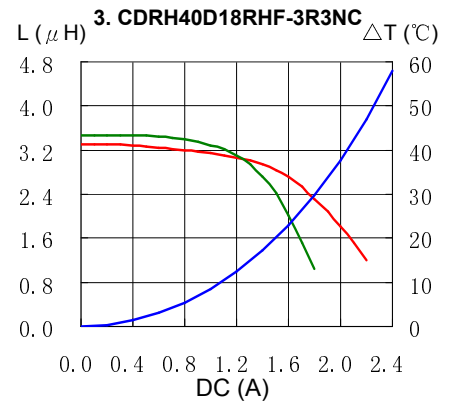
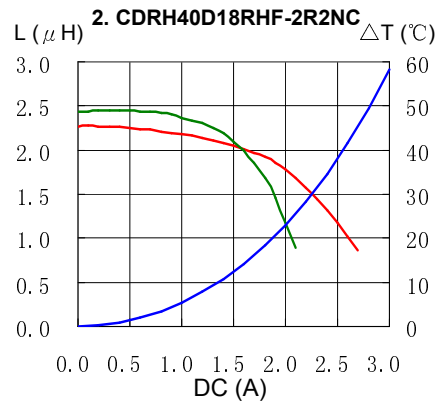
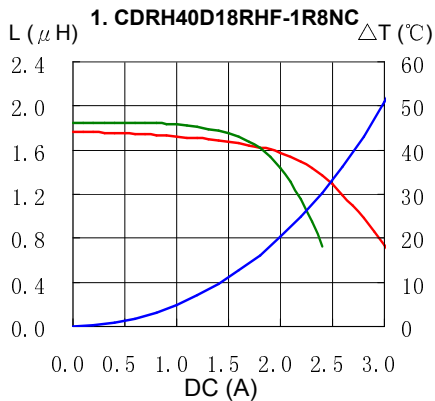
※3 Temperature rise current: The value of DC current when the temperature rise is  $\Delta T=40^{\circ}\text{C}$ ( $T_a=20^{\circ}\text{C}$ ).

# SMD Power Inductor CDRH40D18R



## Saturation Current & Temperature Rise Graph

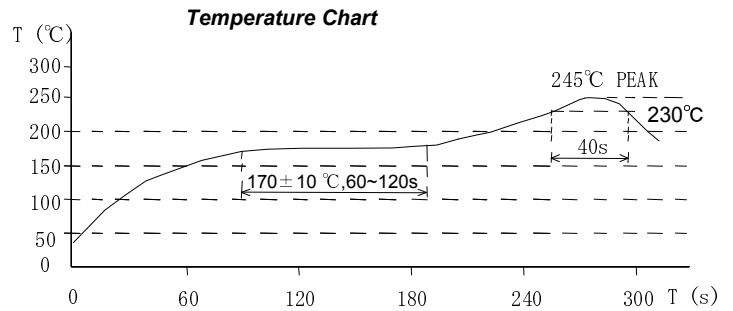
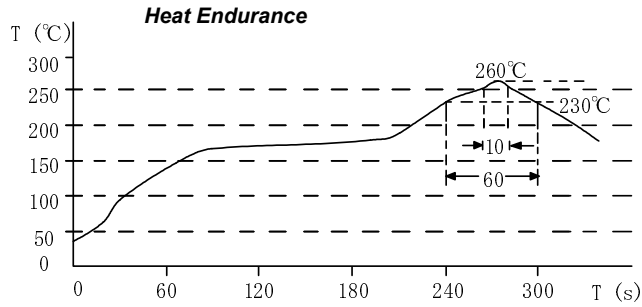
— L (20°C) — L (105°C) —  $\Delta T$



# SMD Power Inductor CDRH40D18R



## Solder Reflow Condition



Please refer to the sales offices on our website - <http://www.sumida.com>

### Hong Kong

Tel.+852-2880-6781  
FAX.+852-2565-9600  
[sales@hk.sumida.com](mailto:sales@hk.sumida.com)

### Saitama(Japan)

Tel.+81-48-691-7300  
FAX.+81-48-691-7340  
[sales@jp.sumida.com](mailto:sales@jp.sumida.com)

### Chicago

Tel.+1-847-545-6700  
FAX. +1-847-545-6720  
[sales@us.sumida.com](mailto:sales@us.sumida.com)

### Shanghai

Tel.+86-21-5836-3299  
FAX.+86-21-5836-3266  
[shanghai.sales@cn.sumida.com](mailto:shanghai.sales@cn.sumida.com)

### Seoul

Tel.+82-2-6237-0777  
FAX.+82-2-6237-0778  
[sales@kr.sumida.com](mailto:sales@kr.sumida.com)

### Oberzell

Tel.+49-8591-937-0  
FAX. +49-8591-937-103  
[contact@eu.sumida.com](mailto:contact@eu.sumida.com)

### Shenzhen

Tel.+86-755-8291-0228  
FAX.+86-755-8291-0338  
[shenzhen.sales@cn.sumida.com](mailto:shenzhen.sales@cn.sumida.com)

### Singapore

Tel.+65-6296-3388  
FAX.+65-6841-4426  
[sales@sg.sumida.com](mailto:sales@sg.sumida.com)

### Neumarkt

Tel.+49-9181-4509-110  
FAX. +49-9181-4509-310  
[infocomp@eu.sumida.com](mailto:infocomp@eu.sumida.com)

### Taipei

Tel.+886-2-8751-2737  
FAX.+886-2-8751-2738  
[sales@tw.sumida.com](mailto:sales@tw.sumida.com)

### San Jose

Tel.+1-408-321-9660  
FAX.+1-408-321-9308  
[sales@us.sumida.com](mailto:sales@us.sumida.com)