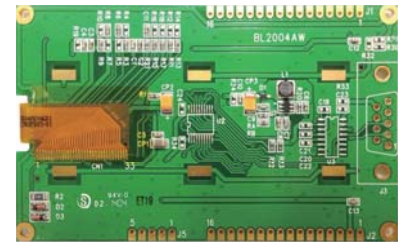


# BL2004AW



## Feature

1. COG with SMT
2. 5V single power supply with built-in positive voltage
3. 5x8 dots format display
4. Built-in controller : US2066
5. Color: white, yellow, green
6. Support MCU Interfaces:
  - o 4 / 8-bit 6800/8080-series parallel interface
  - o Serial Peripheral Interface
  - o I<sup>2</sup>C Interface (Up to 400kbit/s)
7. 256-step contrast control
8. 3 sets of CGROM  
(ROM A / B / C – hardware/software selectable)
9. Operating temperatures: -40°C to 85°C
10. Option: +3.3V single power supply

## Pin Assignment

| Pin  | Symbol | Level | Description                                   |
|------|--------|-------|---|
| 1    | GND    | 0V    | Ground  |
| 2    | VDD    | 5.0V  | Supply voltage for logic .                    |
| 3    | NC     | -     | -   |
| 4    | RS     | H/L   | H: DATA, L: Instruction code                  |
| 5    | R/W    | H/L   | H: Read (MPU→Module)<br>L: Write (MPU←Module) |
| 6    | E      | H→L   | Chip enable signal                            |
| 7~14 | DB0~7  | H/L   | Data bit 0~7                                  |
| 15   | NC     | -     | -   |
| 16   | NC     | -     | -   |

## Mechanical Data

| Item             | Standard Value | Unit |
|------------------|----------------|------|
| Module Dimension | 98.0 x 60.0    | mm   |
| Active Area      | 72.42 x 22.82  | mm   |
| Dot Size         | 0.57 x 0.57    | mm   |
| Character Size   | 2.97 x 4.77    | mm   |

## Electronic Characteristics

| Item               | Symbol | Condition   | Typical Value | Unit |
|--------------------|--------|-------------|---------------|------|
| Input Voltage      | Vdd    | Vdd =+ 5.0V | 5.0           | V    |
| Supply Current     | Idd    | Vdd =+ 5.0V | 200.0         | mA   |
| Life Time (Yellow) |        | 120cd/m2    | 40,000        | hrs  |

## Dimension

