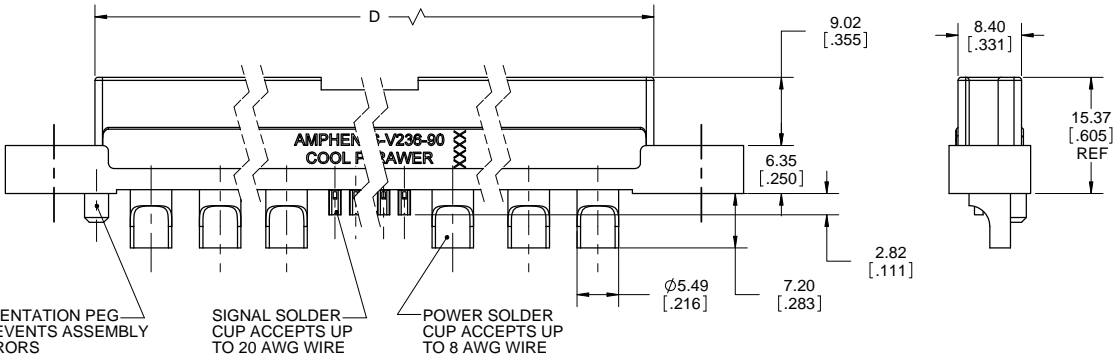
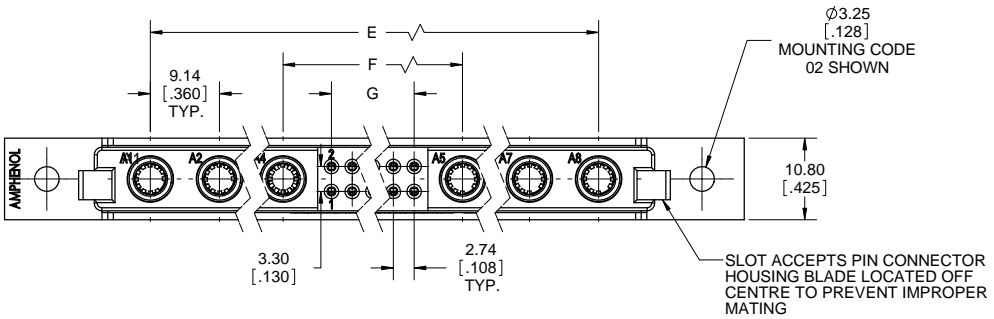


| REVISIONS |                               |          |       |
|-----------|-------------------------------|----------|-------|
| REV       | DESCRIPTION, ECN, EAR NO.     | DATE     | APP'D |
| B         | UPDATE SOCKET                 | APR04/12 | A.G   |
| C         | UPDATE MOUNTING OPTIONS       | JUL10/12 | S.M   |
| D         | REMOVED 10 PWR CONTACT OPTION | JUL12/12 | S.M   |
| E         | ADD UL FILE NO.               | JUN14/13 | S.M   |



**PART NUMBER:**

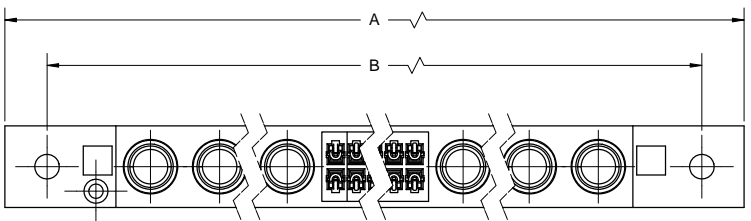
**DWR - T X XX S - V X 1 X - 0X**

- SERIES**  
DWR
- PRODUCT TYPE**  
T = SLIMDRAWER FINISHED CONNECTOR
- NUMBER OF POWER CONTACT POSITIONS**  
2, 4, 6, 8 OR A = 10
- NUMBER OF SIGNAL CONTACT POSITIONS**  
00, 04, 06, 08, 10 ... 40
- GENDER**  
S = SOCKET (FEMALE)
- ORIENTATION**  
V = VERTICAL
- CONTACT OPTIONS**  
2 = COOLBAND POWER SIZE CB8  
3 = COOLBAND POWER SIZE CB10  
STD SIGNAL
- CONTACT TERMINATION**  
1 = SOLDER CUP TAIL: POWER 8 AWG, SIGNAL 20 AWG.
- PLATING OPTIONS**  
2 = 0.38µm [15µ"] GOLD  
3 = 0.76µm [30µ"] GOLD  
6 = 5.08µm [200µ"] SILVER POWER, 0.38µm [15µ"] GOLD SIGNAL
- MOUNTING OPTION**  
00 = NO MOUNTING FEATURE  
01 = NO MOUNTING EARS  
02 = 3.25mm [.128"] DIA THROUGH HOLE FOR MOUNTING OR GUIDE PIN  
04 = #4-40 THREADED HOLE  
06 = M3 THREADED HOLE

**SPECIAL CONFIGURATIONS**  
MANY UNIQUE FEATURES ARE READILY AVAILABLE TO SUIT CUSTOMER REQUIREMENTS. CONTACT AUTHORIZED AMPHENOL REPRESENTATIVE FOR DETAILS.

**NOTES:**

1. MATERIALS: ALL MATERIALS ARE RoHS COMPLIANT PER EU DIRECTIVE 2011/65/EU AND AMENDMENTS.
  - HOUSING: HIGH TEMPERATURE RESISTANT NYLON, UL FLAMMABILITY RATING 94V-0, COLOUR BLACK
  - SIGNAL CONTACTS: PHOSPHOR BRONZE PLATED WITH GOLD OVER 1.27µm (50µ") NICKEL ON THE MATING AREA AND 2.54µm (100µ") MATTE TIN OVER NICKEL ON THE TAILS.
  - COOLBAND POWER CONTACTS: BERYLLIUM COPPER MATING GRID, COPPER ALLOY BALANCE, PLATED WITH GOLD OR SILVER OVER 1.27µm (50µ") NICKEL ON THE MATING GRID AND SILVER OVER NICKEL OR MATTE TIN BALANCE.
2. WHEN MATED WITH PIN CONNECTOR DWR-TXXXP-VXXX-XX, THE ORDER OF MECHANICAL AND ELECTRICAL ENGAGEMENT IS A) HOUSING BLADES, B) HOUSING SHROUD, C) POWER CONTACTS AND D) SIGNAL CONTACTS.
3. ELECTRICAL CHARACTERISTICS
  - CURRENT RATING: UP TO 55A POWER, 4A SIGNAL
  - DIELECTRIC WITHSTANDING VOLTAGE: 1500VDC
  - INSULATION RESISTANCE: 5000 MEGOHMS
  - OPERATING TEMPERATURE: -55°C TO +105°C
4. UL FILE NUMBER E64911



|                            |                        |                      |          |
|----------------------------|------------------------|----------------------|----------|
| UNLESS SPECIFIED OTHERWISE | DRAWN                  | S.CAELERS            | APR06/11 |
| PRIMARY UNITS MILLIMETERS  | CHECKED                | A.GREEN              | APR11/11 |
| SECONDARY INCHES           | M.E. APP'D             |                      |          |
| REFERENCE IN PARENTHESES   | Q.A. APP'D             |                      |          |
| GENERAL TOLERANCES         | DWG APPR.              |                      |          |
| 1 DECIMAL PLACE            | ENG. REL. NO.          |                      |          |
| 2 DECIMAL PLACES           | REF.                   |                      |          |
| 3 DECIMAL PLACES           | THIRD ANGLE PROJECTION | DO NOT SCALE DRAWING |          |
| ANGULAR DEGREES            |                        |                      |          |

**Amphenol Canada Corp.**

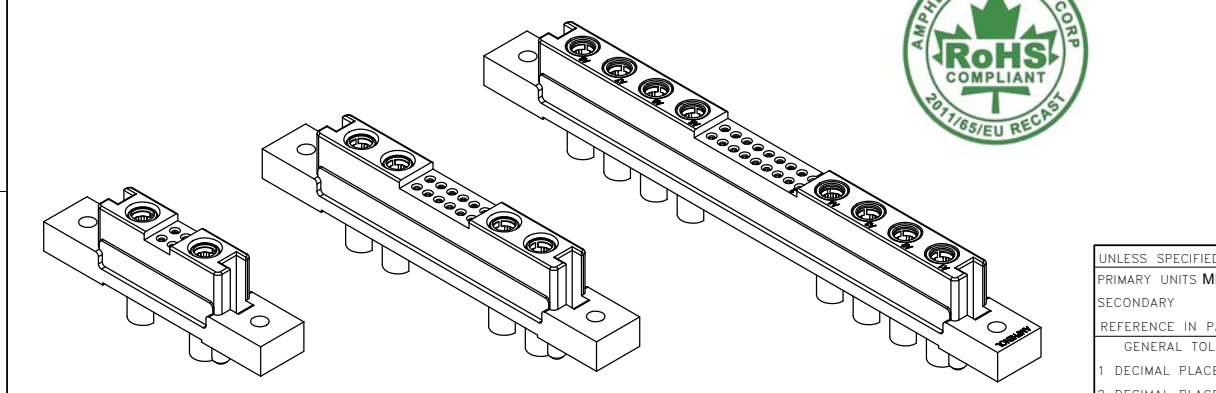
DWR SERIES SLIM DRAWER SOCKET CONNECTOR, POWER & SIGNAL CONTACTS, SOLDER CUP TAILS (POWER: 8 AWG, SIGNAL: 20 AWG), RoHS COMPLIANT

DWG. NO. **P-DWR-TXXXS-VX1X-0X** REV **E**

CODE ID NO. 03554 DWG SIZE: C SCALE: 2:1 SHEET 1 OF 2

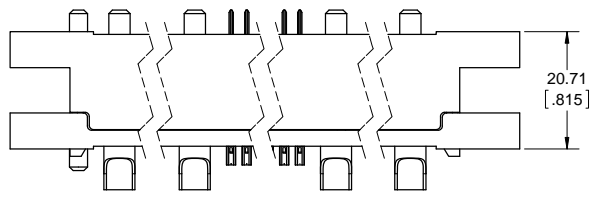
| Socket Connector Part Number | Number of Power Contacts | Number of Signal Contacts | "A"            |       | "B"                       |       | "C"                          |       | "D"                |       | "E"                       |       | "F"                      |       | "G"                        |       |
|------------------------------|--------------------------|---------------------------|----------------|-------|---------------------------|-------|------------------------------|-------|--------------------|-------|---------------------------|-------|--------------------------|-------|----------------------------|-------|
|                              |                          |                           | Overall Length |       | Mounting Hole Centrelines |       | Length Without Mounting Ears |       | Socket Body Length |       | Outside Power Centrelines |       | Inside Power Centrelines |       | Outside Signal Centrelines |       |
|                              |                          |                           | mm             | inch  | mm                        | inch  | mm                           | inch  | mm                 | inch  | mm                        | inch  | mm                       | inch  | mm                         | inch  |
| DWR-T200S-VXXX-XX            | 2                        | 0                         | 47.70          | 1.878 | 36.53                     | 1.438 | 29.75                        | 1.171 | 23.98              | 0.944 | 9.14                      | 0.360 | 9.14                     | 0.360 | ---                        | ---   |
| DWR-T204S-VXXX-XX            | 2                        | 4                         | 54.10          | 2.130 | 42.93                     | 1.690 | 36.15                        | 1.423 | 30.38              | 1.196 | 15.54                     | 0.612 | 15.54                    | 0.612 | 2.74                       | 0.108 |
| DWR-T208S-VXXX-XX            | 2                        | 8                         | 59.59          | 2.346 | 48.41                     | 1.906 | 41.63                        | 1.639 | 35.86              | 1.412 | 21.03                     | 0.828 | 21.03                    | 0.828 | 8.23                       | 0.324 |
| DWR-T212S-VXXX-XX            | 2                        | 12                        | 65.07          | 2.562 | 53.90                     | 2.122 | 47.12                        | 1.855 | 41.35              | 1.628 | 26.52                     | 1.044 | 26.52                    | 1.044 | 13.72                      | 0.540 |
| DWR-T216S-VXXX-XX            | 2                        | 16                        | 70.56          | 2.778 | 59.39                     | 2.338 | 52.61                        | 2.071 | 46.84              | 1.844 | 32.00                     | 1.260 | 32.00                    | 1.260 | 19.20                      | 0.756 |
| DWR-T220S-VXXX-XX            | 2                        | 20                        | 76.05          | 2.994 | 64.87                     | 2.554 | 58.09                        | 2.287 | 52.32              | 2.060 | 37.49                     | 1.476 | 37.49                    | 1.476 | 24.69                      | 0.972 |
| DWR-T224S-VXXX-XX            | 2                        | 24                        | 81.53          | 3.210 | 70.36                     | 2.770 | 63.58                        | 2.503 | 57.81              | 2.276 | 42.98                     | 1.692 | 42.98                    | 1.692 | 30.18                      | 1.188 |
| DWR-T228S-VXXX-XX            | 2                        | 28                        | 87.02          | 3.426 | 75.84                     | 2.986 | 69.06                        | 2.719 | 63.30              | 2.492 | 48.46                     | 1.908 | 48.46                    | 1.908 | 35.66                      | 1.404 |
| DWR-T232S-VXXX-XX            | 2                        | 32                        | 92.51          | 3.642 | 81.33                     | 3.202 | 74.55                        | 2.935 | 68.78              | 2.708 | 53.95                     | 2.124 | 53.95                    | 2.124 | 41.15                      | 1.620 |
| DWR-T236S-VXXX-XX            | 2                        | 36                        | 97.99          | 3.858 | 86.82                     | 3.418 | 80.04                        | 3.151 | 74.27              | 2.924 | 59.44                     | 2.340 | 59.44                    | 2.340 | 46.63                      | 1.836 |
| DWR-T240S-VXXX-XX            | 2                        | 40                        | 103.48         | 4.074 | 92.30                     | 3.634 | 85.52                        | 3.367 | 79.76              | 3.140 | 64.92                     | 2.556 | 64.92                    | 2.556 | 52.12                      | 2.052 |
| DWR-T400S-VXXX-XX            | 4                        | 0                         | 65.99          | 2.598 | 54.81                     | 2.158 | 48.03                        | 1.891 | 42.27              | 1.664 | 27.43                     | 1.080 | 9.14                     | 0.360 | ---                        | ---   |
| DWR-T404S-VXXX-XX            | 4                        | 4                         | 72.39          | 2.850 | 61.21                     | 2.410 | 54.43                        | 2.143 | 48.67              | 1.916 | 33.83                     | 1.332 | 15.54                    | 0.612 | 2.74                       | 0.108 |
| DWR-T408S-VXXX-XX            | 4                        | 8                         | 77.88          | 3.066 | 66.70                     | 2.626 | 59.92                        | 2.359 | 54.15              | 2.132 | 39.32                     | 1.548 | 21.03                    | 0.828 | 8.23                       | 0.324 |
| DWR-T412S-VXXX-XX            | 4                        | 12                        | 83.36          | 3.282 | 72.19                     | 2.842 | 65.41                        | 2.575 | 59.64              | 2.348 | 44.81                     | 1.764 | 26.52                    | 1.044 | 13.72                      | 0.540 |
| DWR-T416S-VXXX-XX            | 4                        | 16                        | 88.85          | 3.498 | 77.67                     | 3.058 | 70.89                        | 2.791 | 65.13              | 2.564 | 50.29                     | 1.980 | 32.00                    | 1.260 | 19.20                      | 0.756 |
| DWR-T420S-VXXX-XX            | 4                        | 20                        | 94.34          | 3.714 | 83.16                     | 3.274 | 76.38                        | 3.007 | 70.61              | 2.780 | 55.78                     | 2.196 | 37.49                    | 1.476 | 24.69                      | 0.972 |
| DWR-T424S-VXXX-XX            | 4                        | 24                        | 99.82          | 3.930 | 88.65                     | 3.490 | 81.87                        | 3.223 | 76.10              | 2.996 | 61.26                     | 2.412 | 42.98                    | 1.692 | 30.18                      | 1.188 |
| DWR-T428S-VXXX-XX            | 4                        | 28                        | 105.31         | 4.146 | 94.13                     | 3.706 | 87.35                        | 3.439 | 81.58              | 3.212 | 66.75                     | 2.628 | 48.46                    | 1.908 | 35.66                      | 1.404 |
| DWR-T432S-VXXX-XX            | 4                        | 32                        | 110.79         | 4.362 | 99.62                     | 3.922 | 92.84                        | 3.655 | 87.07              | 3.428 | 72.24                     | 2.844 | 53.95                    | 2.124 | 41.15                      | 1.620 |
| DWR-T436S-VXXX-XX            | 4                        | 36                        | 116.28         | 4.578 | 105.11                    | 4.138 | 98.33                        | 3.871 | 92.56              | 3.644 | 77.72                     | 3.060 | 59.44                    | 2.340 | 46.63                      | 1.836 |
| DWR-T440S-VXXX-XX            | 4                        | 40                        | 121.77         | 4.794 | 110.59                    | 4.354 | 103.81                       | 4.087 | 98.04              | 3.860 | 83.21                     | 3.276 | 64.92                    | 2.556 | 52.12                      | 2.052 |
| DWR-T600S-VXXX-XX            | 6                        | 0                         | 84.28          | 3.318 | 73.10                     | 2.878 | 66.32                        | 2.611 | 60.55              | 2.384 | 45.72                     | 1.800 | 9.14                     | 0.360 | ---                        | ---   |
| DWR-T604S-VXXX-XX            | 6                        | 4                         | 90.68          | 3.570 | 79.50                     | 3.130 | 72.72                        | 2.863 | 66.95              | 2.636 | 52.12                     | 2.052 | 15.54                    | 0.612 | 2.74                       | 0.108 |
| DWR-T608S-VXXX-XX            | 6                        | 8                         | 96.16          | 3.786 | 84.99                     | 3.346 | 78.21                        | 3.079 | 72.44              | 2.852 | 57.61                     | 2.268 | 21.03                    | 0.828 | 8.23                       | 0.324 |
| DWR-T612S-VXXX-XX            | 6                        | 12                        | 101.65         | 4.002 | 90.47                     | 3.562 | 83.69                        | 3.295 | 77.93              | 3.068 | 63.09                     | 2.484 | 26.52                    | 1.044 | 13.72                      | 0.540 |
| DWR-T616S-VXXX-XX            | 6                        | 16                        | 107.14         | 4.218 | 95.96                     | 3.778 | 89.18                        | 3.511 | 83.41              | 3.284 | 68.58                     | 2.700 | 32.00                    | 1.260 | 19.20                      | 0.756 |
| DWR-T620S-VXXX-XX            | 6                        | 20                        | 112.62         | 4.434 | 101.45                    | 3.994 | 94.67                        | 3.727 | 88.90              | 3.500 | 74.07                     | 2.916 | 37.49                    | 1.476 | 24.69                      | 0.972 |
| DWR-T624S-VXXX-XX            | 6                        | 24                        | 118.11         | 4.650 | 106.93                    | 4.210 | 100.15                       | 3.943 | 94.39              | 3.716 | 79.55                     | 3.132 | 42.98                    | 1.692 | 30.18                      | 1.188 |
| DWR-T628S-VXXX-XX            | 6                        | 28                        | 123.60         | 4.866 | 112.42                    | 4.426 | 105.64                       | 4.159 | 99.87              | 3.932 | 85.04                     | 3.348 | 48.46                    | 1.908 | 35.66                      | 1.404 |
| DWR-T632S-VXXX-XX            | 6                        | 32                        | 129.08         | 5.082 | 117.91                    | 4.642 | 111.13                       | 4.375 | 105.36             | 4.148 | 90.53                     | 3.564 | 53.95                    | 2.124 | 41.15                      | 1.620 |
| DWR-T636S-VXXX-XX            | 6                        | 36                        | 134.57         | 5.298 | 123.39                    | 4.858 | 116.61                       | 4.591 | 110.85             | 4.364 | 96.01                     | 3.780 | 59.44                    | 2.340 | 46.63                      | 1.836 |
| DWR-T640S-VXXX-XX            | 6                        | 40                        | 140.06         | 5.514 | 128.88                    | 5.074 | 122.10                       | 4.807 | 116.33             | 4.580 | 101.50                    | 3.996 | 64.92                    | 2.556 | 52.12                      | 2.052 |
| DWR-T800S-VXXX-XX            | 8                        | 0                         | 102.57         | 4.038 | 91.39                     | 3.598 | 84.61                        | 3.331 | 78.84              | 3.104 | 64.01                     | 2.520 | 9.14                     | 0.360 | ---                        | ---   |
| DWR-T804S-VXXX-XX            | 8                        | 4                         | 108.97         | 4.290 | 97.79                     | 3.850 | 91.01                        | 3.583 | 85.24              | 3.356 | 70.41                     | 2.772 | 15.54                    | 0.612 | 2.74                       | 0.108 |
| DWR-T808S-VXXX-XX            | 8                        | 8                         | 114.45         | 4.506 | 103.28                    | 4.066 | 96.50                        | 3.799 | 90.73              | 3.572 | 75.90                     | 2.988 | 21.03                    | 0.828 | 8.23                       | 0.324 |
| DWR-T812S-VXXX-XX            | 8                        | 12                        | 119.94         | 4.722 | 108.76                    | 4.282 | 101.98                       | 4.015 | 96.22              | 3.788 | 81.38                     | 3.204 | 26.52                    | 1.044 | 13.72                      | 0.540 |
| DWR-T816S-VXXX-XX            | 8                        | 16                        | 125.43         | 4.938 | 114.25                    | 4.498 | 107.47                       | 4.231 | 101.70             | 4.004 | 86.87                     | 3.420 | 32.00                    | 1.260 | 19.20                      | 0.756 |
| DWR-T820S-VXXX-XX            | 8                        | 20                        | 130.91         | 5.154 | 119.74                    | 4.714 | 112.96                       | 4.447 | 107.19             | 4.220 | 92.35                     | 3.636 | 37.49                    | 1.476 | 24.69                      | 0.972 |
| DWR-T824S-VXXX-XX            | 8                        | 24                        | 136.40         | 5.370 | 125.22                    | 4.930 | 118.44                       | 4.663 | 112.67             | 4.436 | 97.84                     | 3.852 | 42.98                    | 1.692 | 30.18                      | 1.188 |
| DWR-T828S-VXXX-XX            | 8                        | 28                        | 141.88         | 5.586 | 130.71                    | 5.146 | 123.93                       | 4.879 | 118.16             | 4.652 | 103.33                    | 4.068 | 48.46                    | 1.908 | 35.66                      | 1.404 |
| DWR-T832S-VXXX-XX            | 8                        | 32                        | 147.37         | 5.802 | 136.19                    | 5.362 | 129.41                       | 5.095 | 123.65             | 4.868 | 108.81                    | 4.284 | 53.95                    | 2.124 | 41.15                      | 1.620 |
| DWR-T836S-VXXX-XX            | 8                        | 36                        | 152.86         | 6.018 | 141.68                    | 5.578 | 134.90                       | 5.311 | 129.13             | 5.084 | 114.30                    | 4.500 | 59.44                    | 2.340 | 46.63                      | 1.836 |
| DWR-T840S-VXXX-XX            | 8                        | 40                        | 158.34         | 6.234 | 147.17                    | 5.794 | 140.39                       | 5.527 | 134.62             | 5.300 | 119.79                    | 4.716 | 64.92                    | 2.556 | 52.12                      | 2.052 |

FOR INTERMEDIATE CONFIGURATIONS (NUMBER OF SIGNAL CONTACTS = 06, 10, 14 ...) DIMENSIONS CAN BE CALCULATED BY AVERAGING VALUES IMMEDIATELY BEFORE AND AFTER. FOR EXAMPLE, DIMENSIONS OF DWR-T206S-VXXX-XX CAN BE OBTAINED BY AVERAGING VALUES CORRESPONDING TO DWR-T204S-VXXX-XX AND DWR-T208S-VXXX-XX.



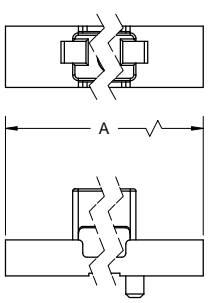
| REVISONS |                              |          |       |
|----------|------------------------------|----------|-------|
| REV      | DESCRIPTION, ECN, EAR NO.    | DATE     | APP'D |
| B        | UPDATE SOCKET                | APR04/12 | A.G   |
| C        | UPDATE MOUNTING OPTIONS      | JUL10/12 | S.M   |
| D        | REMOVE 10 PWR CONTACT OPTION | JUL12/12 | S.M   |
| E        | ADD UL FILE NO.              | JUN14/13 | S.M   |

PIN AND SOCKET MATED ASSEMBLY

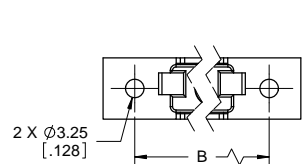
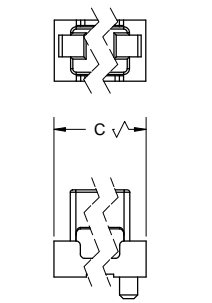


MOUNTING OPTIONS

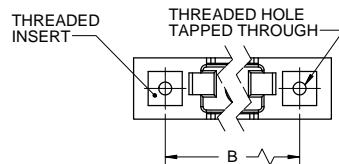
MOUNTING CODE: 00



MOUNTING CODE: 01



MOUNTING CODE: 02



MOUNTING CODE: 04, 06

|                            |                        |           |          |
|----------------------------|------------------------|-----------|----------|
| UNLESS SPECIFIED OTHERWISE | DRAWN                  | S.CAELERS | APR06/11 |
| PRIMARY UNITS MILLIMETERS  | CHECKED                | A.GREEN   | APR11/11 |
| SECONDARY UNITS INCHES     | M.E. APP'D             |           |          |
| REFERENCE IN PARENTHESES   | Q.A. APP'D             |           |          |
| GENERAL TOLERANCES         | DWG APPR.              |           |          |
| 1 DECIMAL PLACE            | ENG. REL. NO.          |           |          |
| 2 DECIMAL PLACES           | REF.                   |           |          |
| 3 DECIMAL PLACES           | THIRD ANGLE PROJECTION |           |          |
| ANGULAR DEGREES            | DO NOT SCALE DRAWING   |           |          |

**Amphenol Canada Corp.**

DWR SERIES SLIM DRAWER SOCKET CONNECTOR, POWER & SIGNAL CONTACTS, SOLDER CUP TAILS (POWER: 8 AWG, SIGNAL: 20 AWG), RoHS COMPLIANT

DWG. NO. **P-DWR-TXXXS-VX1X-0X** REV **E**

CODE ID NO. 03554 DWG SIZE: C SCALE: 2:1 SHEET 2 OF 2