



## DESCRIPTION

The A7108 is a high efficiency monolithic synchronous buck regulator using a constant frequency, current mode architecture. The device is available in an adjustable version. Supply current with no load is 300uA and drops to <1uA in shutdown. The 2.5V to 6.5V input voltage range makes the A7108 ideally suited for single Li-Ion, two to four AA battery-powered applications. 100% duty cycle provides low dropout operation, extending battery life in portable systems. PWM pulse skipping mode operation provides very low output ripple voltage for noise sensitive applications. Switching frequency is internally set at 1.5MHz, allowing the use of small surface mount inductors and capacitors. The internal synchronous switch increases efficiency and eliminates the need for an external Schottky diode. Low output voltages are easily supported with the 0.6V feedback reference voltage.

The A7108 is available in SOT-25 package.

## ORDERING INFORMATION

Package Type	Part Number	
SOT-25	E5	A7108E5R-ADJ A7108E5VR-ADJ
Note	ADJ: Adjustable Output Voltage V: Halogen free Package R: Tape & Reel	
AiT provides all RoHS products Suffix " V " means Halogen free Package		

## FEATURES

- High Efficiency: Up to 96%
- 1.5MHz Constant Switching Frequency
- 800mA Output Current at  $V_{IN}=3V$
- Integrated Main switch and synchronous rectifier. No Schottky Diode Required
- 2.5V to 6.5V Input Voltage Range
- Output Voltage as Low as 0.6V
- 100% Duty Cycle in Dropout
- Quiescent Current: 300 $\mu$ A(input < 4.2V)
- Slope Compensated Current Mode Control for Excellent Line and Load Transient Response
- Short Circuit Protection
- <1uA Shutdown Current
- Soft start
- Available in SOT-25 Package

## APPLICATION

- Cellular and Smart Phones
- Microprocessors and DSP Core Supplies
- Wireless and DSL Modems
- PDAs
- MP3 / MP4 /PMP Player
- Digital Still and Video Cameras
- Portable Instruments

## TYPICAL APPLICATION

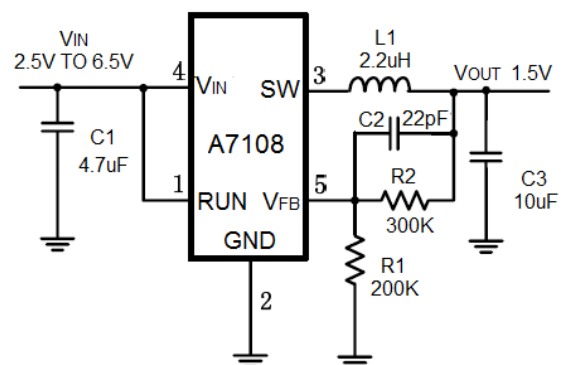
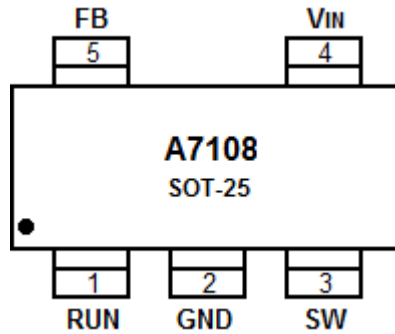


Figure 1. Basic Application Circuit with A7108 adjustable version



## PIN DESCRIPTION



Top View

Pin #	Symbol	Function
1	RUN	Regulator Enable control input. Drive RUN above 1.5V to turn on the part. Drive RUN below 0.6V to turn it off. In shutdown, all functions are disabled drawing <math><1\mu\text{A}</math> supply current. Do not leave RUN floating.
2	GND	Ground
3	SW	Power Switch Output. It is the Switch node connection to Inductor. This pin connects to the drains of the internal P-CH and N-CH MOSFET switches.
4	$V_{IN}$	Supply Input Pin. Must be closely decoupled to GND, Pin 2, with a 2.2 $\mu\text{F}$ or greater ceramic capacitor.
5	$V_{FB}$	$V_{FB}$ (A7108): Feedback Input Pin. Connect FB to the center point of the external resistor divider. The feedback threshold voltage is 0.6V.



## ABSOLUTE MAXIMUM RATINGS

Input Supply Voltage	-0.3V~ +7V
RUN, V <sub>FB</sub> Voltages	-0.3V~V <sub>IN</sub> +0.3V
SW Voltages	-0.3V~ V <sub>IN</sub> +0.3V
P-Channel Switch Source Current (DC)	1000mA
N-Channel Switch Sink Current (DC)	1000mA
Peak SW Sink and Source Current	1.4A
Package Thermal Resistance <sup>NOTE1</sup>	
θ <sub>JA</sub>	220°C/W
θ <sub>JC</sub>	110°C/W
Operating Temperature Range	-40°C~+85°C
Junction Temperature <sup>NOTE2</sup>	+125°C
Storage Temperature Range	-65°C~+150°C
Lead Temperature (Soldering, 10s)	+260°C

Stress beyond above listed "Absolute Maximum Ratings" may lead permanent damage to the device. These are stress ratings only and operations of the device at these or any other conditions beyond those indicated in the operational sections of the specifications are not implied. Exposure to absolute maximum rating conditions for extended periods may affect device reliability.

NOTE1: Thermal Resistance is specified with approximately 1 square of 1 oz copper.

NOTE2: T<sub>J</sub> is calculated from the ambient temperature T<sub>A</sub> and power dissipation PD according to the following formula:

$$A7108: T_J = T_A + (P_D) \times (220^\circ\text{C/W})$$



## ELECTRICAL CHARACTERISTICS<sup>NOTE3</sup>

$V_{IN}=V_{RUN}= 3.6V$ ,  $T_A=25^{\circ}C$ , unless otherwise noted

Parameter	Conditions	Min.	Typ.	Max.	Unit
Input Voltage Range		2.5		6.5	V
Input DC Supply Current					
Active Mode	$V_{FB}=0.5V$ or $V_{OUT}=90\%$		300	400	$\mu A$
Shutdown Mode	$V_{FB}=0V$ , $V_{IN}=4.2V$		0.1	0.1	$\mu A$
Regulated Feedback Voltage	$T_A= +25^{\circ}C$	0.5880	0.6000	0.6120	V
	$T_A= 0^{\circ}C \leq T_A \leq 85^{\circ}C$	0.5865	0.6000	0.6135	
	$T_A= -40^{\circ}C \leq T_A \leq 85^{\circ}C$	0.5820	0.6000	0.6180	
$V_{FB}$ Input Bias Current	$V_{FB}= 0.65V$			$\pm 30$	nA
Reference Voltage Line Regulation	$V_{IN}= 2.5V$ to $5.5V$ , $I_{OUT}=10mA$		0.5	0.60	%/V
Output Voltage Line Regulation	$V_{IN}= 2.5V$ to $5.5V$ $I_{OUT}=10mA$		0.5	0.60	%/V
Output Voltage Load Regulation	$I_{OUT}=10$ to $800mA$		0.5		%
Peak Inductor Current	$V_{IN}=3V$ , $V_{FB}=0.5V$ or $V_{OUT}=90\%$ Duty Cycle <35%		1.0		A
Oscillator Frequency	$V_{FB}=0.6V$ or $V_{OUT}=100\%$	1.2	1.5	1.8	MHz
$R_{DS(ON)}$ of P-CH MOSFET	$I_{SW}=300mA$		0.3	0.35	$\Omega$
$R_{DS(ON)}$ of N-CH MOSFET	$I_{SW}=-300mA$		0.3	0.35	$\Omega$
SW Leakage	$V_{RUN}= 0V$ , $V_{SW}=0V$ or $5V$ , $V_{IN}=5V$		$\pm 0.01$	$\pm 1$	$\mu A$
Soft start			0.3		ms
RUN Threshold Low	$-40^{\circ}C \leq T_A \leq 85^{\circ}C$			0.6	V
RUN Threshold High	$-40^{\circ}C \leq T_A \leq 85^{\circ}C$	1.5			V
RUN Leakage Current			$\pm 0.01$	$\pm 1$	$\mu A$
Thermal Shutdown			165		$^{\circ}C$

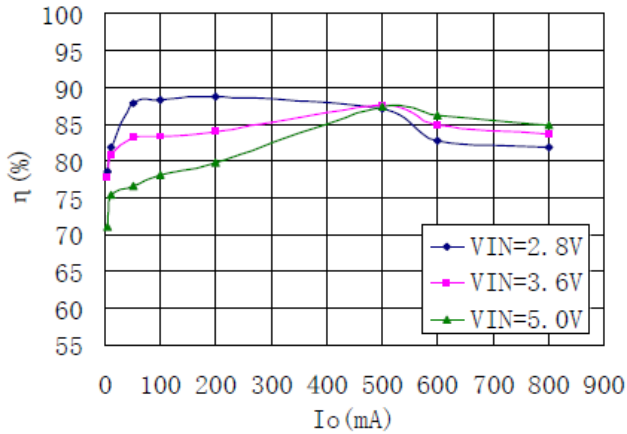
NOTE3: 100% production test at +25°C. Specifications over the temperature range are guaranteed by design and characterization.



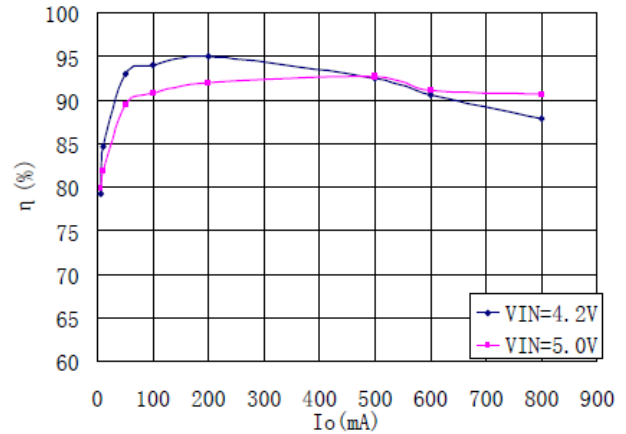
## TYPICAL PERFORMANCE CHARACTERISTICS

Test Figure 1 above unless otherwise specified

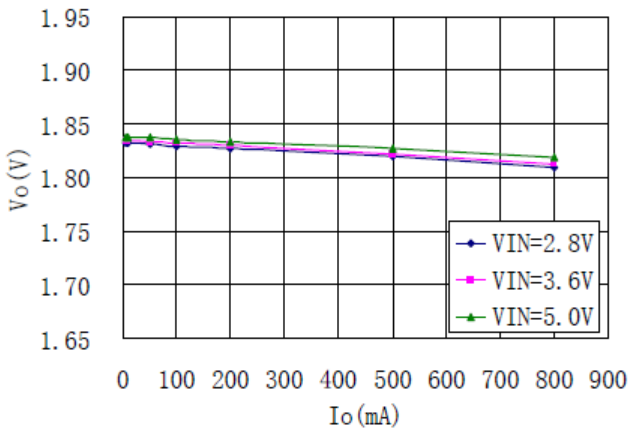
### 1. $\eta$ vs. $I_o$ ( $V_o=1.8V$ )



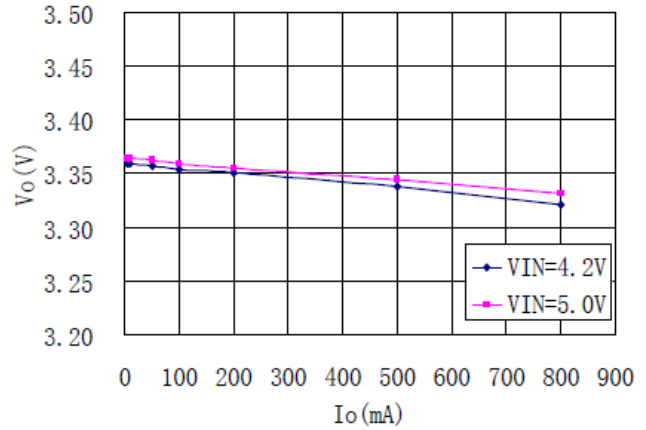
### 2. $\eta$ vs. $I_o$ ( $V_o=3.3V$ )



### 3. $V_o$ vs. $I_o$ ( $V_o=1.8V$ )

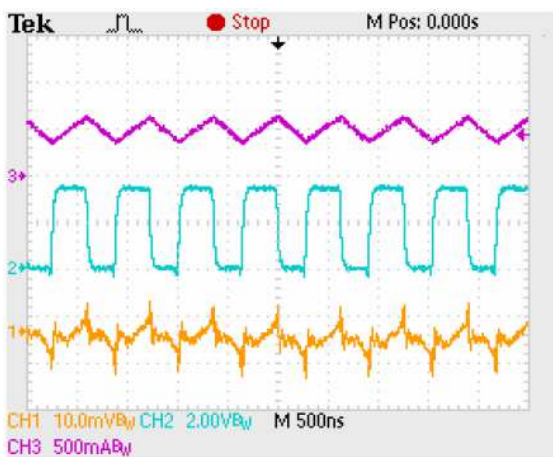


### 4. $V_o$ vs. $I_o$ ( $V_o=3.3V$ )



### 5. Normal Operation

CH1: $V_o$  CH2: $V_{sw}$  CH3: $I_{sw}$



### 6. Load Transient

CH1: $V_o$  CH3: $I_o$







## DETAILED INFORMATION

### Operation

A7108 is a monolithic switching mode Step-Down DC-DC converter. It utilizes internal MOSFETs to achieve high efficiency and can generate very low output voltage by using internal reference at 0.6V. It operates at a fixed switching frequency, and uses the slope compensated current mode architecture.

### Current Mode PWM Control

Slope compensated current mode PWM control provides stable switching and cycle-by-cycle current limit for excellent load and line responses and protection of the internal main switch (P-Ch MOSFET) and synchronous rectifier (N-CH MOSFET). During normal operation, the internal P-Ch MOSFET is turned on for a certain time to ramp the inductor current at each rising edge of the internal oscillator, and switched off when the peak inductor current is above the error voltage. The current comparator,  $I_{COMP}$ , limits the peak inductor current. When the main switch is off, the synchronous rectifier will be turned on immediately and stay on until either the inductor current starts to reverse, as indicated by the current reversal comparator,  $I_{ZERO}$ , or the beginning of the next clock cycle. The OVDET comparator controls output transient overshoots by turning the main switch off and keeping it off until the fault is no longer present.

### Idle Mode Operation

At very light loads, the A7108 automatically enters pulse skipping Mode. In the pulse skipping Mode, the inductor current may reach zero or reverse on each pulse. The PWM control loop will automatically skip pulses to maintain output regulation. The bottom MOSFET is turned off by the current reversal comparator,  $I_{ZERO}$ , and the switch voltage will ring. This is discontinuous mode operation, and is normal behavior for the switching regulator.

### Dropout Operation

When the input voltage decreases toward the value of the output voltage, the A7108 allows the main switch to remain on for more than one switching cycle and increases the duty cycle <sup>NOTE4</sup> until it reaches 100%. The output voltage then is the input voltage minus the voltage drop across the main switch and the inductor. At low input supply voltage, the  $R_{DS(ON)}$  of the P-Channel MOSFET increases, and the efficiency of the converter decreases. Caution must be exercised to ensure the heat dissipated not to exceed the maximum junction temperature of the IC.



**NOTE 4:** The duty cycle D of a step-down converter is defined as:

$$D = T_{ON} \times f_{OSC} \times 100\% \approx \frac{V_{OUT}}{V_{IN}} \times 100\%$$

Where  $T_{ON}$  is the main switch on time and  $f_{OSC}$  is the oscillator frequency (1.5MHz).

### Maximum Load Current

The A7108 will operate with input supply voltage as low as 2.5V, however, the maximum load current decreases at lower input due to large IR drop on the main switch and synchronous rectifier. The slope compensation signal reduces the peak inductor current as a function of the duty cycle to prevent sub-harmonic oscillations at duty cycles greater than 50%. Conversely the current limit increases as the duty cycle decreases.

### Layout Guidance

When laying out the PCB board, the following suggestions should be taken to ensure proper operation of the A7108. These items are also illustrated graphically in Figure 2.

1. The power traces, including the GND trace, the SW trace and the  $V_{IN}$  trace should be kept short, direct and wide.
2. The  $V_{FB}$  pin should be connected directly to the feedback resistor. The resistive divider R1/R2 must be connected between the (+) plate of  $C_{OUT}$  and ground.
3. Connect the (+) plate of C1 to the  $V_{IN}$  pin as closely as possible. This capacitor provides the AC current to internal power MOSFET.
4. Keep the switching node, SW, away from the sensitive  $V_{FB}$  node.
5. Keep the (-) plates of C1 and C3 as close as possible.

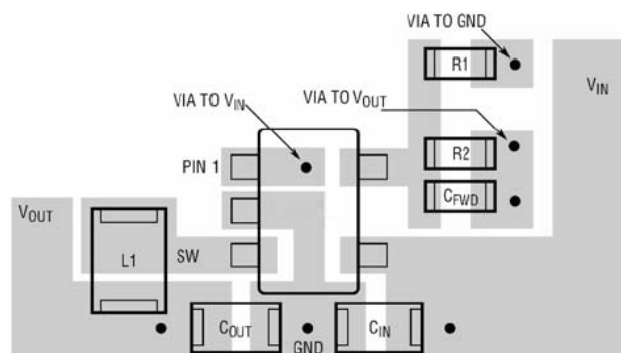


Figure2. A7108-ADJ output Suggested Layout





### Setting the Output Voltage

Figure 1 above shows the basic application circuit with A7108 adjustable output version. The external resistor sets the output voltage according to the following equation:

$$V_{OUT} = 0.6V \times \left( 1 + \frac{R2}{R1} \right)$$

R1= 200kΩ for all outputs; R2= 200kΩ for V<sub>OUT</sub>=1.2V,

R2=300kΩ for V<sub>OUT</sub>=1.5V, R2=400kΩ for V<sub>OUT</sub>=1.8V, and R2=633.3kΩ for V<sub>OUT</sub>=2.5V.

### Inductor Selection

For most designs, the A7108 operates with inductors of 1μH to 4.7μH. Low inductance values are physically smaller but require faster switching, which results in some efficiency loss. The inductor value can be derived from the following equation:

$$L = \frac{V_{OUT} \times (V_{IN} - V_{OUT})}{V_{IN} \times \Delta I_L \times f_{OSC}}$$

Where Δ<sub>L</sub> is inductor Ripple Current. Large value inductors lower ripple current and small value inductors result in high ripple currents. Choose inductor ripple current approximately 35% of the maximum load current 800mA, or Δ<sub>L</sub>=280mA.

For output voltages above 2.0V, when light-load efficiency is important, the minimum recommended inductor is 2.2μH. For optimum voltage-positioning load transients, choose an inductor with DC series resistance in the 50mΩ to 150mΩ range. For higher efficiency at heavy loads (above 200mA), or minimal load regulation (but some transient overshoot), the resistance should be kept below 100mΩ. The DC current rating of the inductor should be at least equal to the maximum load current plus half the ripple current to prevent core saturation (800mA+140mA). Table 1 lists some typical surface mount inductors that meet target applications for the A7108.

Part #	L (μH)	Max DCR (mΩ)	Rated D.C. Current (A)	Size WxLxH (mm)
Sumida CR43	1.4	56.2	2.52	4.5x4.0x3.5
	2.2	71.2	1.75	
	3.3	86.2	1.44	
	4.7	108.7	1.15	
Sumida CDRH4D18	1.5	75	1.32	4.7x4.7x2.0
	2.2	110	1.04	
	4.7	162	0.84	
Toko D312C	1.5	120	1.29	3.6x3.6x1.2
	2.2	140	1.14	
	3.3	180	0.98	
	4.7	240	0.79	

Table 1 Typical Surface Mount Inductors



### Input Capacitor Selection

The input capacitor reduces the surge current drawn from the input and switching noise from the device. The input capacitor impedance at the switching frequency shall be less than input source impedance to prevent high frequency switching current passing to the input. A low ESR input capacitor sized for maximum RMS current must be used. Ceramic capacitors with X5R or X7R dielectrics are highly recommended because of their low ESR and small temperature coefficients. A 4.7 $\mu$ F ceramic capacitor for most applications is sufficient.

### Output Capacitor Selection

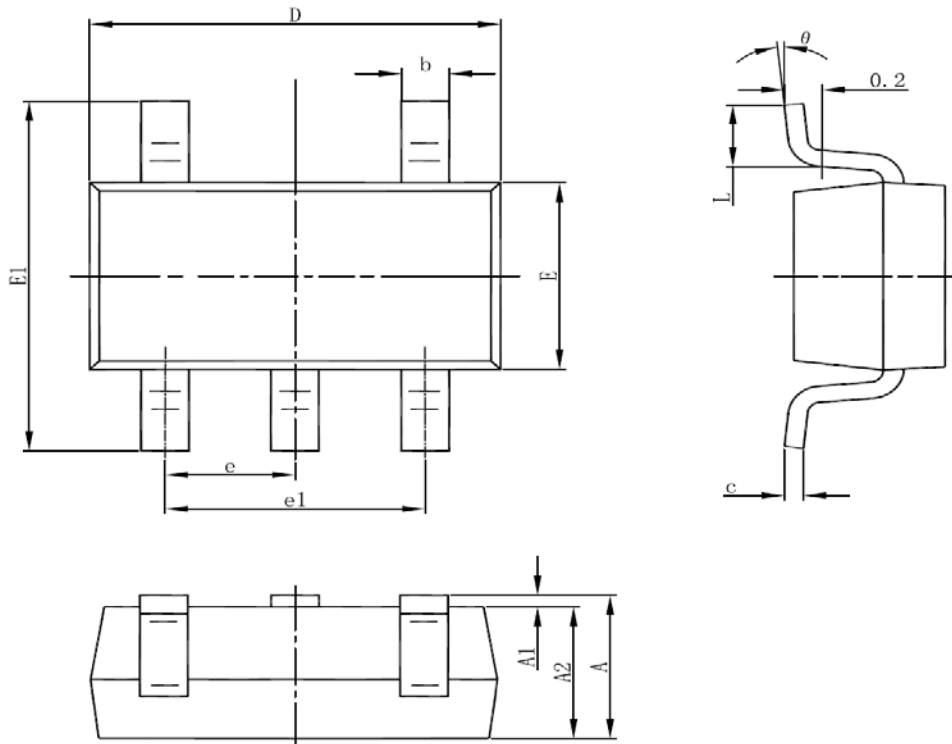
The output capacitor is required to keep the output voltage ripple small and to ensure regulation loop stability. The output capacitor must have low impedance at the switching frequency. Ceramic capacitors with X5R or X7R dielectrics are recommended due to their low ESR and high ripple current. The output ripple  $V_{OUT}$  is determined by:

$$\Delta V_{OUT} \leq \frac{V_{OUT} \times (V_{IN} - V_{OUT})}{V_{IN} \times f_{OSC} \times L} \times \left( ESR + \frac{1}{8 \times f_{osc} \times C3} \right)$$



**PACKAGE INFORMATION**

Dimension in SOT-25 (Unit: mm)



Symbol	Min	Max
A	1.050	1.250
A1	0.000	0.100
A2	1.050	1.150
b	0.300	0.500
c	0.100	0.200
D	2.820	3.020
E	1.500	1.700
E1	2.650	2.950
e	0.950(BSC)	
e1	1.800	2.000
L	0.300	0.600
$\theta$	0°	8°



## IMPORTANT NOTICE

AiT Semiconductor Inc. (AiT) reserves the right to make changes to any its product, specifications, to discontinue any integrated circuit product or service without notice, and advises its customers to obtain the latest version of relevant information to verify, before placing orders, that the information being relied on is current.

AiT Semiconductor Inc.'s integrated circuit products are not designed, intended, authorized, or warranted to be suitable for use in life support applications, devices or systems or other critical applications. Use of AiT products in such applications is understood to be fully at the risk of the customer. As used herein may involve potential risks of death, personal injury, or severe property, or environmental damage. In order to minimize risks associated with the customer's applications, the customer should provide adequate design and operating safeguards.

AiT Semiconductor Inc. assumes to no liability to customer product design or application support. AiT warrants the performance of its products of the specifications applicable at the time of sale.